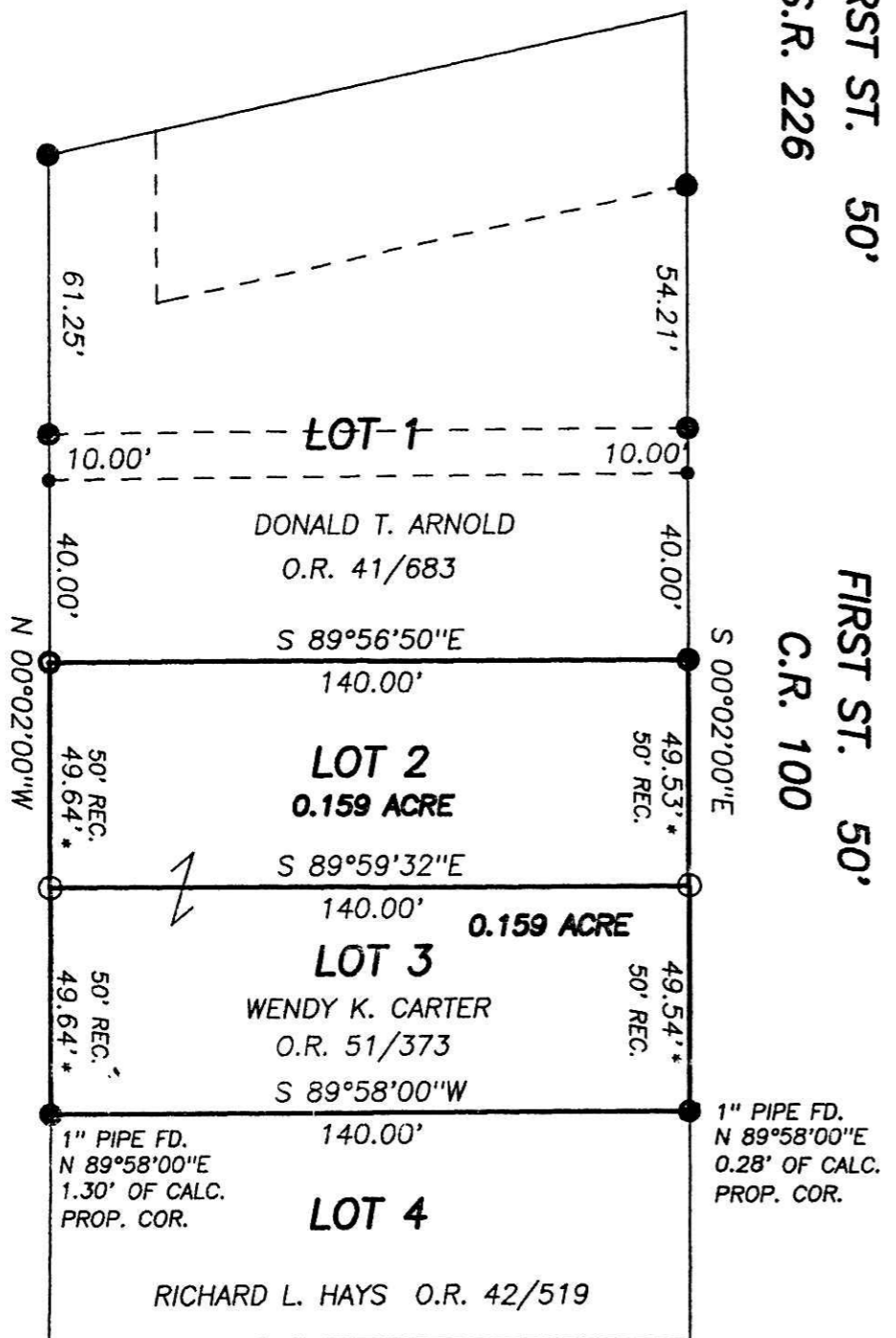


CONSOLIDATED RAIL CORPORATION D.V. 203/456



* = PRORATED DISTANCES

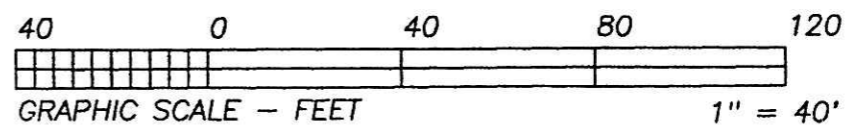
REFERENCE DOCUMENTS:
TAX MAPS
DEEDS AS SHOWN
SURVEY PLATS: 14/546

PLAT APPROVED



BEARINGS ARE TO AN ASSUMED MERIDIAN AND ARE USED TO DENOTE ANGULAR MEAS. ONLY.

200200016700
Filed for Record in
HOLMES COUNTY, OH
SALLY MILLER
06-25-2002 02:57 pm.
SMALL PLAT 20.00
OR Book 18 Page 316 - 316
OR vol 116 page 102



INDEXED

- LEGEND:
- = STONE FD.
 - = 5/8" RE-BAR FD. UNLESS NOTED
 - = POINT-OF-DEPARTURE
 - = 5/8" X 30" RE-BAR W/PLASTIC I.D. CAP SET
 - ⊗ = R/R SPIKE SET
 - △ = R/R SPIKE FD.

200200016700
HOLMES CTY
TITLE
MILLERSBURG,

I CERTIFY THIS PLAT & SURVEY TO BE CORRECT TO THE BEST OF MY KNOWLEDGE:

JUNE 6, 2002

JIM SHAMP, REG. SUR. NO. S-6088 DATE



HEARTLAND SURVEYING, INC			
Jim Shamp			
5210 T.R. 257		MILLERSBURG, OH 44654	
PH: 330-674-4698		FAX: 330-674-0897	
SURVEY		STATE	
WENDY K. CARTER		OHIO	
COUNTY	TWP.	RNG.	TWP.
HOLMES	RIPLEY	14 W	18 N
NORTHEAST QUARTER OF SECTION 30 VILLAGE OF BIG PRAIRIE, LOTS 2 & 3			020603