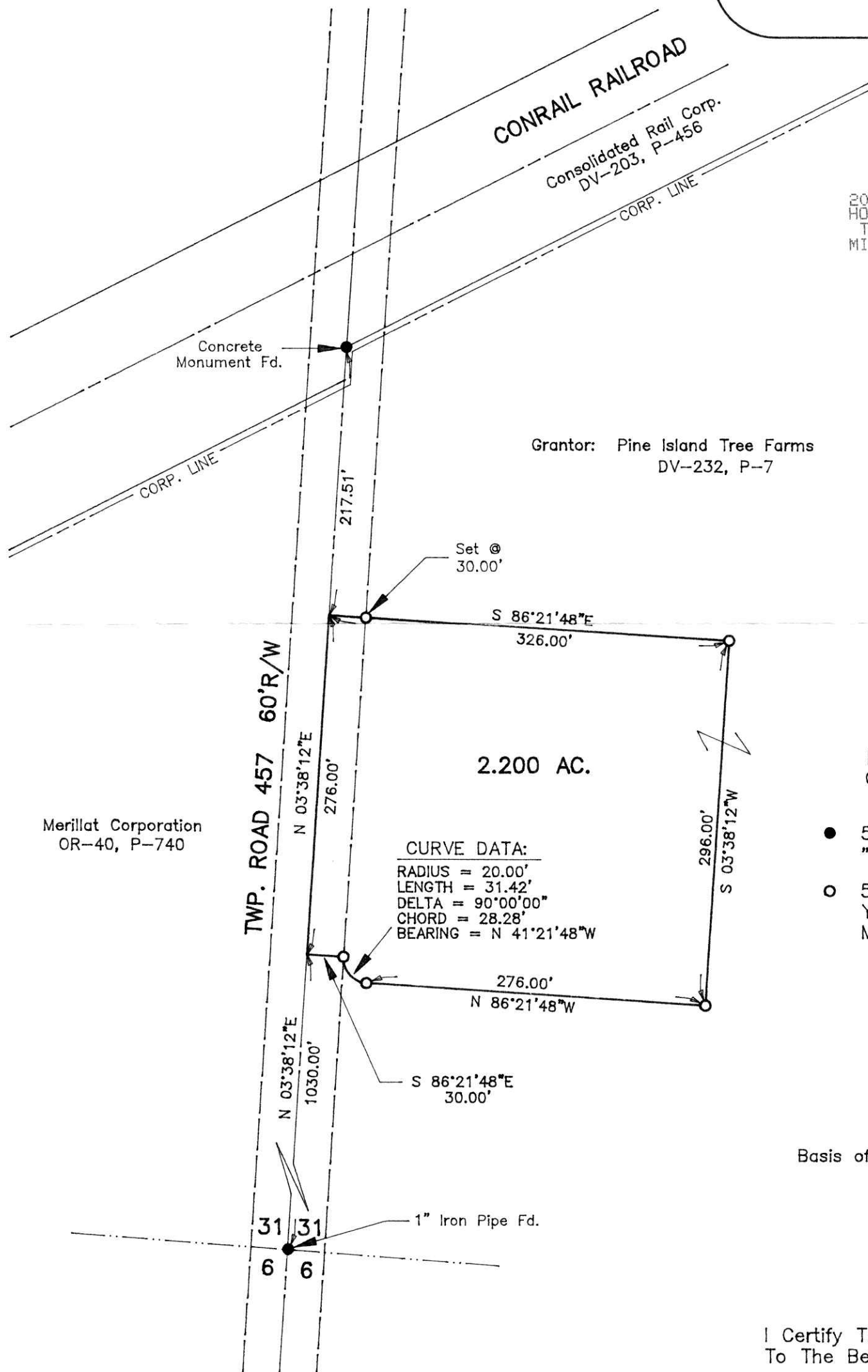


SURVEY of a 2.200 ACRE PARCEL

18 308

SE QUARTER of SECTION 31
T-20-N, R-15-W
VILLAGE OF LOUDONVILLE
WASHINGTON TOWNSHIP
HOLMES COUNTY, OHIO

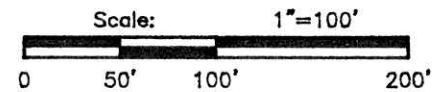
200200016471
Filed for Record in
HOLMES COUNTY, OH
SALLY MILLER
06-11-2002 03:16 pm.
SMALL PLAT 20.00
OR Book 18 Page 308 - 308
CR vol 114 pg 996



200200016471
HOLMES CTY
TITLE
MILLERSBURG,

Grantor: Pine Island Tree Farms
DV-232, P-7

Merillat Corporation
OR-40, P-740



- 5/8" Bar Found With Ident Cap "RUDOLPH" Unless Otherwise Noted.
- 5/8" x 30" Bar With Yellow Plastic Cap Marked RUDOLPH Set 6449

PLAT APPROVED

5/6/2002 b

Basis of Bearings: Plat Vol.-13, Pg.-195

Approved This _____ Day Of _____, 200__ By The Holmes County Board of Health.

By _____

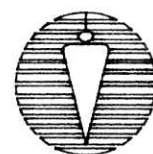
Approved This 26 Day Of NOV, 2001 By The Loudonville Planning Commission.

By *Stewart Jody 4/15/02*

4/15/02 fel Bukhart MAYOR

I Certify This Survey To Be Correct To The Best Of My Knowledge.

Date 4-15-02 *Ronald G. Rudolph* P.S. No. 6449



R.G. Rudolph
SURVEYING, INC.

223 W. Liberty St.
Wooster, Ohio 44691
(330) 262-0798
Job No. 14377-2