

18 MAR 2008

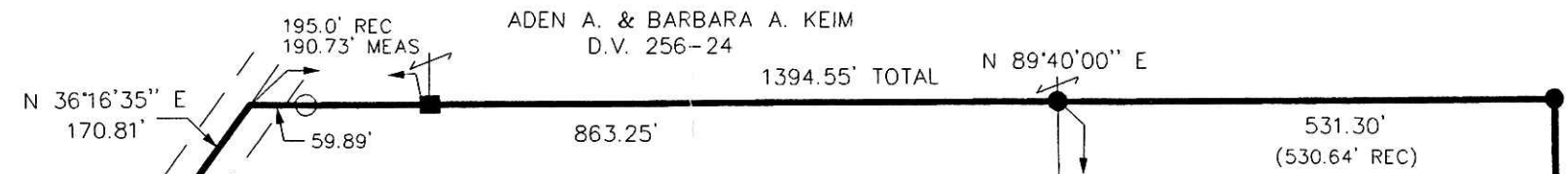
PAINT TOWNSHIP
S.E. QTR. SECTION 35
S.W. QTR. SECTION 36
T- 15 N R- 11 W
HOLMES COUNTY, OHIO

200200013916
Filed for Record in
HOLMES COUNTY, OH
SALLY MILLER
02-19-2002 01:43 pm.
SMALL PLAT 20.00
OR Book 18 Page 208 208
OR Vol 104 pg 361

INDEXED

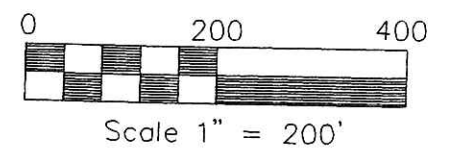
REFERENCES:

- DEED VOL. 142 PAGE 65
- DEED VOL. 167 PAGE 599
- DEED VOL. 230 PAGE 661
- DEED VOL. 238 PAGE 755
- DEED VOL. 256 PAGE 24
- DEED VOL. 267 PAGE 450
- DEED VOL. 271 PAGE 421
- DEED VOL. 303 PAGE 710
- O.R. VOL. 9 PAGE 572
- BEARINGS FROM
PLAT VOL.12 PAGE 976



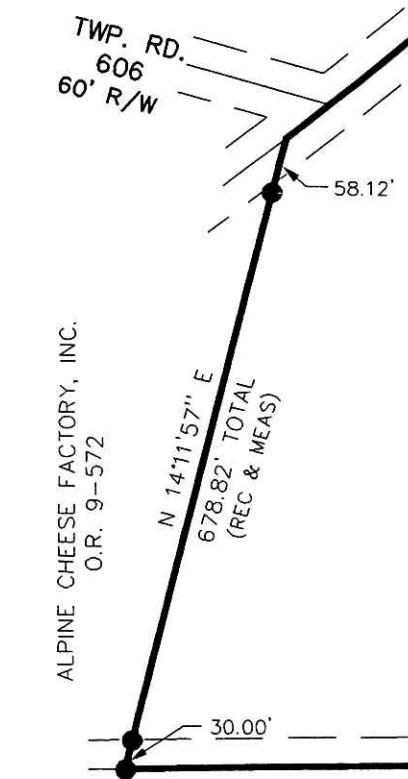
66.765 ACRES
JOHN Y. & ANNA WEAVER
 D.V. 142-65
 D.V. 167-599
 D.V. 238-755

S.E. QTR. SECTION 35 49.344 ACRES
 S.W. QTR. SECTION 36 17.421 ACRES

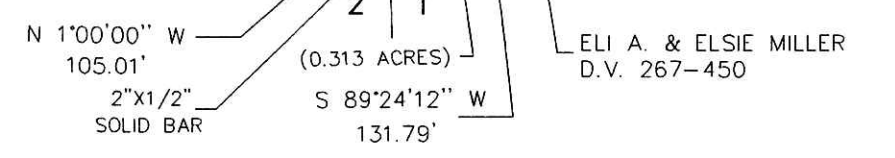
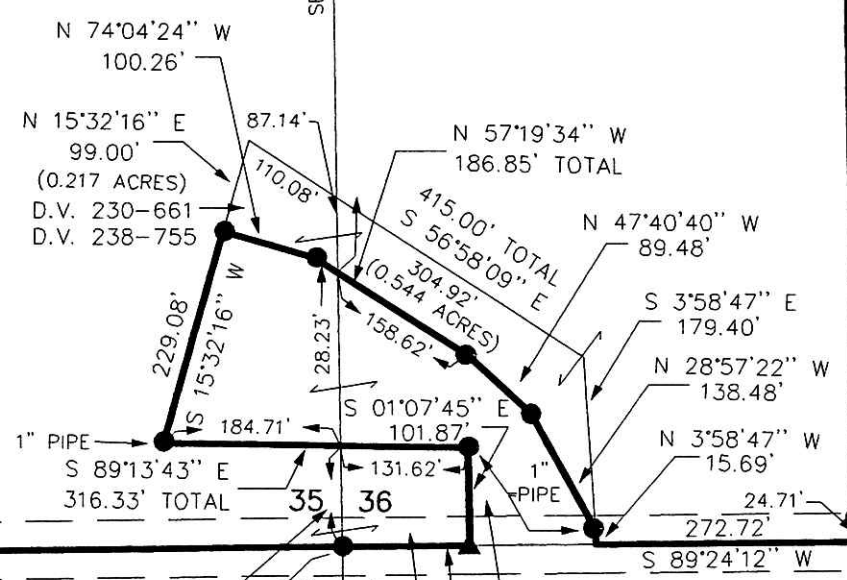


- STONE FOUND
- ▲ R.R. SPIKE FOUND
- 5.8" REBAR FOUND UNLESS OTHERWISE NOTED
- 5/8" REBAR WITH I.D. CAP SET I.D. CAP MARKED "BAKER 6938"

200200013916
 PAUL MILLER LAW OFFICE
 MILLERSBURG, OH 44654



(49.127 ACRES)



DONALD C. BAKER SURVEYING
 138 N. CLAY ST.
 MILLERSBURG, OHIO 44654
 PH. 330-674-4788
 FAX 330-674-6027

PLAT APPROVED

2/15/2002 B

I CERTIFY THIS SURVEY TO BE CORRECT TO THE BEST OF MY KNOWLEDGE.

Donald C Baker
 DONALD C. BAKER P.S. 6938

JDD/ FDB DATE: JAN. 18, 2002
 File name: C:\JOBS1\S-891-01\ERZ