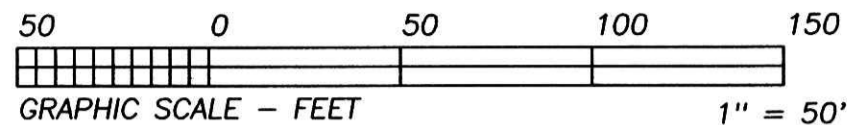




BEARINGS ESTABLISHED FROM PLAT 1/190 AND ARE TO DENOTE ANGULAR MEASUREMENT ONLY.



INDEXED

200100012159
 Filed for Record in
 HOLMES COUNTY, OH
 SALLY MILLER
 12-10-2001 03:31 pm.
 PLAT MED 21.60
 OR Book 18 Page 145 - 145
 Off Rec. Vol. 95 Page 691

- LEGEND:
- = STONE FD.
 - = 5/8" RE-BAR FD. UNLESS NOTED
 - = POINT-OF-DEPARTURE
 - = 5/8" X 30" RE-BAR W/PLASTIC I.D. CAP SET
 - ⊗ = R/R SPIKE SET
 - △ = R/R SPIKE FD.

REFERENCE DOCUMENTS:
 TAX MAPS
 DEEDS AS SHOWN
 SURVEY PLATS: 1/286 & 287, 4/2,
 1/190, 12/461

200100012159
 CHELSEA TITLE AG
 6797 N HIGH ST
 WORTHINGTON, OH 43085

I CERTIFY THIS PLAT & SURVEY TO BE CORRECT TO THE BEST OF MY KNOWLEDGE:

J. Shamp

NOVEMBER 21, 2001

JIM SHAMP, REG. SUR. NO. S-6088

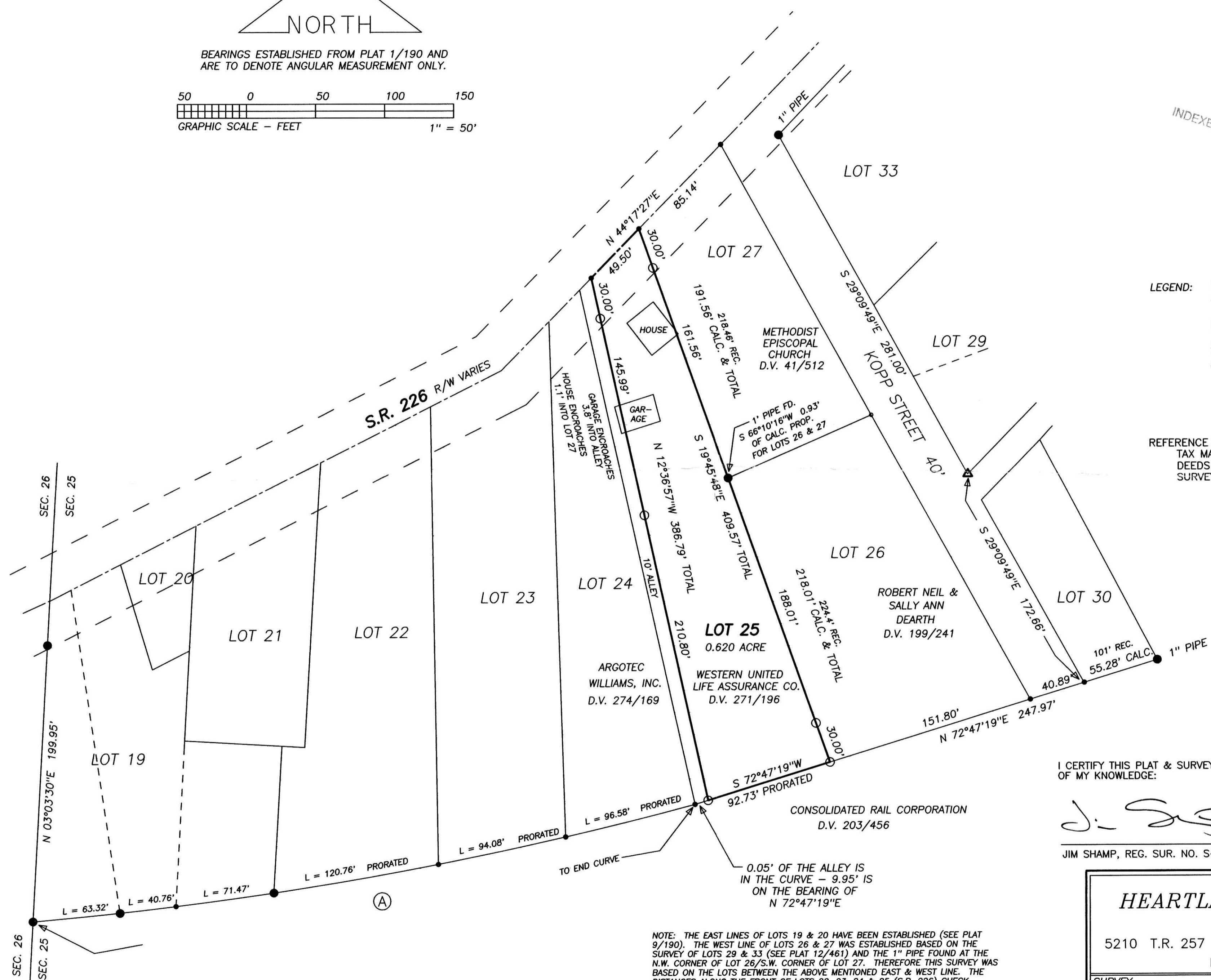
DATE



HEARTLAND SURVEYING, INC

Jim Shamp
 5210 T.R. 257 MILLERSBURG, OH 44654
 PH: 330-674-4698

SURVEY		STATE	
WESTERN UNITED LIFE ASSURANCE CO.		OHIO	
COUNTY	TWP.	RNG.	TWP.
HOLMES	WASHINGTON	15 W	20 N
S.W. QUARTER OF SECTION 25 VILLAGE OF LAKEVILLE			011102



NOTE: THE EAST LINES OF LOTS 19 & 20 HAVE BEEN ESTABLISHED (SEE PLAT 9/190). THE WEST LINE OF LOTS 26 & 27 WAS ESTABLISHED BASED ON THE SURVEY OF LOTS 29 & 33 (SEE PLAT 12/461) AND THE 1" PIPE FOUND AT THE N.W. CORNER OF LOT 26/S.W. CORNER OF LOT 27. THEREFORE THIS SURVEY WAS BASED ON THE LOTS BETWEEN THE ABOVE MENTIONED EAST & WEST LINE. THE DISTANCES ALONG THE FRONT OF LOTS 22, 23, 24 & 25 (S.R. 226) CHECK REASONABLY WELL, SO THE PLATTED DISTANCE OF 49.5' FOR LOT 25 WAS USED (SEE PLAT 1/286/287). THE DISTANCES ON THE REAR OF THESE LOTS IS IN EXCESS, THEREFORE THEY WERE PRORATED.

CURVE	RADIUS	TANGENT	LENGTH	DELTA	DEGREE	CHORD	CH.BEARING
A	2761.13'	244.14'	487.02'	10°06'22"	2°04'30"	486.38'	N 80°06'31"E

PLAT APPROVED

12/2/01 Jg