

# HEARTLAND SURVEYING, INC

5210 T.R. 257  
PH: 330-674-4698  
MILLERSBURG, OH 44654  
Jim Shamp

SURVEY		STATE		OHIO	
ROY D. & EMMA YODER		RNG.		12 W	
HOLMES		TWP.		SALT CREEK	
SOUTHWEST QUARTER OF SECTION 26		RNG.		15 N	
		961121.CRD		990635.PL	

DAVID JR. & ELSIE E. KLINE  
D.V. 278/397

I.P. FD. N 01°30'00"E 20.00'  
I.P. FD. N 01°30'00"E 30.00'

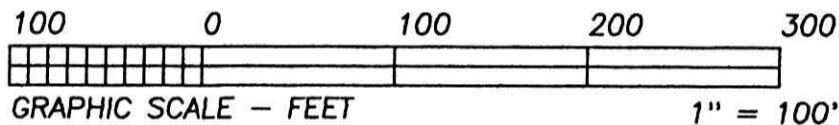
- LEGEND:
- = STONE FD.
  - = 5/8" RE-BAR FD. UNLESS NOTED
  - = POINT-OF-DEPARTURE
  - = 5/8" X 30" RE-BAR W/PLASTIC I.D. CAP SET
  - ⊗ = R/R SPIKE SET
  - △ = R/R SPIKE FD.

PROP. LN.  
PLAT APPROVED  
9/20/2000

INDEXED  
200000004173  
Filed for Record in  
HOLMES COUNTY, OH  
SALLY MILLER  
On 09-26-2000 At 02:46 pm.  
SMALL PLAT 20.00  
DR Book 17 Page 644 - 644  
ok vol 17 pg 5 296-399

MICHAEL R. YODER  
D.V. 278/408

2000000004173  
PAUL A  
MILLER ATTY  
MILLERSBURG,



BEARINGS EST. FROM PLAT 15/115  
AND ARE TO DENOTE ANGULAR MEAS. ONLY.

I CERTIFY THIS PLAT & SURVEY TO BE CORRECT TO THE BEST  
OF MY KNOWLEDGE:

JIM SHAMP, REG. SUR. NO. S-6088  
DATE JUNE 9, 1999

REFERENCE DOCUMENTS:  
TAX MAPS  
DEEDS AS SHOWN  
SURVEY PLATS:

15/115  
15/134

000258 000259 000260  
APPROVED FOR TRANSFER ONLY  
NO SUBDIVISION PLAT REQUIRED  
(O.R.C. 711.001 & 711.131)  
Lot(s) not for building unless  
approved by Board of Health.  
HOLMES CO. PLANNING COMM.

By *DS* Date 9/20/00

DANIEL E. JR. &  
JOANNA F. KLINE  
O.R. 31/591

1372.42' TOTAL

S 02°26'45"W

N 02°26'45"E

938.41' TOTAL

938.41' TOTAL

N 02°26'45"E

S 02°26'45"W

545.96' TOTAL

50.02'

50.02'

50.02'

50.02'

50.02'

50.02'

50.02'

50.02'

50.02'

50.02'

50.02'

50.02'

50.02'

50.02'

50.02'

50.02'

50.02'

50.02'

50.02'

50.02'

50.02'

50.02'

50.02'

50.02'

50.02'

50.02'

50.02'

50.02'

50.02'

50.02'

50.02'

50.02'

50.02'

50.02'

50.02'

50.02'

50.02'

50.02'

50.02'

50.02'

50.02'

50.02'

50.02'

50.02'

50.02'

50.02'

50.02'

50.02'

50.02'

50.02'

50.02'

50.02'

50.02'

50.02'

50.02'

50.02'

50.02'

50.02'

50.02'

50.02'

50.02'

50.02'

50.02'

50.02'

50.02'

50.02'

50.02'

50.02'

50.02'

50.02'

50.02'

50.02'

50.02'

50.02'

50.02'

50.02'

50.02'

50.02'

50.02'

50.02'

50.02'

50.02'

50.02'

50.02'

50.02'

50.02'

50.02'

50.02'

50.02'

50.02'

50.02'

50.02'

50.02'

50.02'

50.02'

50.02'

50.02'

50.02'

50.02'

50.02'

50.02'

50.02'

50.02'

50.02'

50.02'

50.02'

50.02'

50.02'

50.02'

50.02'

50.02'

50.02'

50.02'

50.02'

50.02'

50.02'

50.02'

50.02'

50.02'

50.02'

50.02'

50.02'

50.02'

50.02'

50.02'

50.02'

50.02'

50.02'

50.02'

50.02'

50.02'

50.02'

50.02'

50.02'

50.02'

50.02'

50.02'

50.02'

50.02'

50.02'

50.02'

50.02'

50.02'

50.02'

50.02'

50.02'

50.02'

50.02'

50.02'

50.02'

50.02'

50.02'

50.02'

50.02'

50.02'

50.02'

50.02'

50.02'

50.02'

50.02'

50.02'

50.02'

50.02'

50.02'

50.02'

50.02'

50.02'

50.02'

50.02'

50.02'

50.02'

50.02'

50.02'

50.02'

50.02'

50.02'

50.02'

50.02'

50.02'

50.02'

50.02'

50.02'

50.02'

50.02'

50.02'

50.02'

50.02'

50.02'

50.02'

50.02'

50.02'

50.02'

50.02'

50.02'

50.02'

50.02'

50.02'

50.02'

50.02'

50.02'

50.02'

50.02'

50.02'

50.02'

50.02'

50.02'

50.02'

50.02'

50.02'

50.02'

50.02'

50.02'

50.02'

50.02'

50.02'

50.02'

50.02'

50.02'

50.02'

50.02'

50.02'

50.02'

50.02'

50.02'

50.02'

50.02'

50.02'

50.02'

50.02'

50.02'

50.02'

50.02'

50.02'

50.02'

50.02'

50.02'

50.02'

50.02'

50.02'

50.02'

50.02'

50.02'

50.02'

50.02'

50.02'

50.02'

50.02'

50.02'

50.02'

50.02'

50.02'

50.02'

50.02'