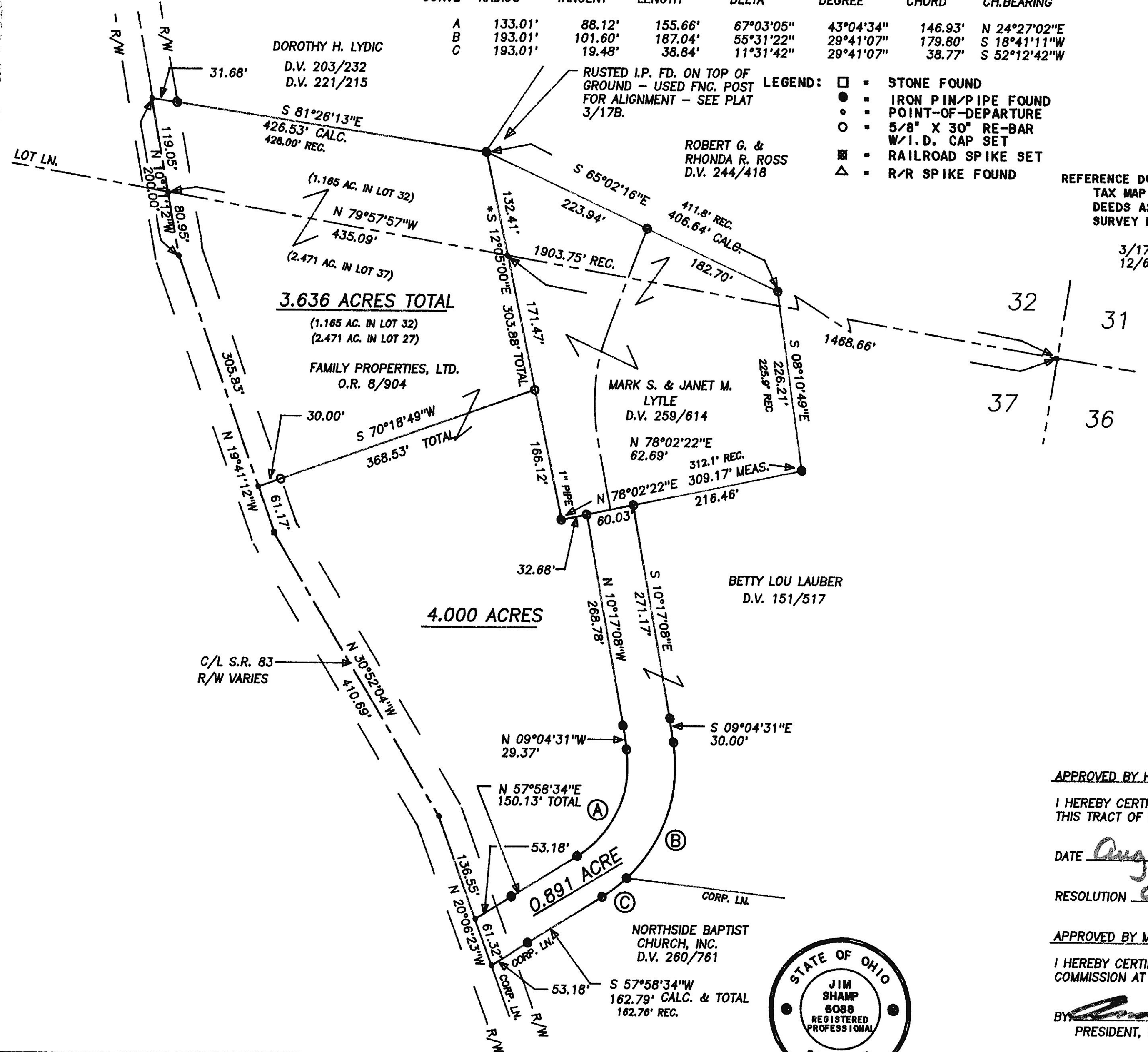


16-916

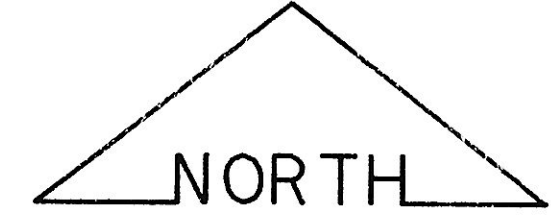
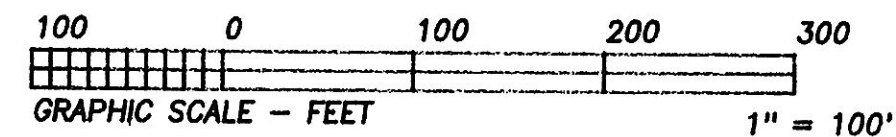
CURVE	RADIUS	TANGENT	LENGTH	DELTA	DEGREE	CHORD	CH.BEARING
A	133.01'	88.12'	155.66'	67°03'05"	43°04'34"	146.93'	N 24°27'02"E
B	193.01'	101.60'	187.04'	55°31'22"	29°41'07"	179.80'	S 18°41'11"W
C	193.01'	19.48'	38.84'	11°31'42"	29°41'07"	38.77'	S 52°12'42"W



- LEGEND:
- = STONE FOUND
  - = IRON PIN/PIPE FOUND
  - = POINT-OF-DEPARTURE
  - = 5/8" X 30" RE-BAR W/I.D. CAP SET
  - ⊠ = RAILROAD SPIKE SET
  - △ = R/R SPIKE FOUND

REFERENCE DOCUMENTS:  
TAX MAP  
DEEDS AS SHOWN  
SURVEY PLATS:

3/17B, 7/797, 9/207, 10/676,  
12/63, 13/116 & 14/500.



\* BEARINGS EST. FROM SUR. PLAT 3/17B.

PROPOSED ANNEXATION  
TO THE  
VILLAGE OF MILLERSBURG

HOLMES COUNTY, STATE OF OHIO

TOTAL ACRES TO BE ANNEXED: 8.527 ACRES

APPROVED BY HOLMES COUNTY COMMISSIONERS

I HEREBY CERTIFY THAT THE HOLMES COUNTY COMMISSIONERS HAVE APPROVED THE DETACHMENT OF THIS TRACT OF LAND AS SHOWN HEREON FROM HOLMES COUNTY.

DATE Aug. 31, 1998

John W. Baker  
CHAIRMAN, COUNTY COMMISSIONERS

RESOLUTION 08-31-98-2

APPROVED BY MILLERSBURG PLANNING COMMISSION

I HEREBY CERTIFY THAT THIS PLAT FOR ANNEXATION WAS APPROVED BY THE MILLERSBURG PLANNING COMMISSION AT A MEETING HELD ON 08-5-98, 1998.

BY: [Signature]  
PRESIDENT, MILLERSBURG PLANNING COMMISSION

APPROVED BY MILLERSBURG VILLAGE COUNCIL

I HEREBY CERTIFY THAT THIS PLAT FOR ANNEXATION WAS APPROVED BY THE VILLAGE COUNCIL OF MILLERSBURG, OHIO AT A MEETING HELD ON NOV 9, 1998.

BY: Karen S. Shaffer  
VILLAGE CLERK

ORDINANCE 98-116

9800005486  
VILLAGE OF  
MILLERSBURG  
MILLERSBURG, OH

RECEIVED  
NOV 13 1998

RICHARD A. GRAVEN  
CLERK



I CERTIFY THIS PLAT & SURVEY TO BE CORRECT TO THE BEST OF MY KNOWLEDGE:

[Signature]

JIM SHAMP, REG. SUR. NO. S-6088 DATE APRIL 27, 1998

<b>HEARTLAND Surveying, Inc.</b>			
5210 T.R. 257		MILLERSBURG, OH 44654	
PH: 330-674-4698			
SURVEY PROPOSED ANNEXATION		STATE OHIO	
COUNTY HOLMES	TWP. HARDY	RNG. 7 WEST	TWP. 9 NORTH
1ST. QUARTER LOTS 32 & 37		2/98 960102 LAYERS 22 & 23	