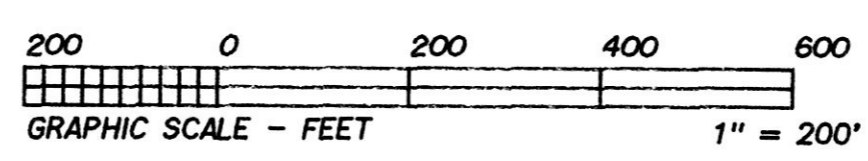


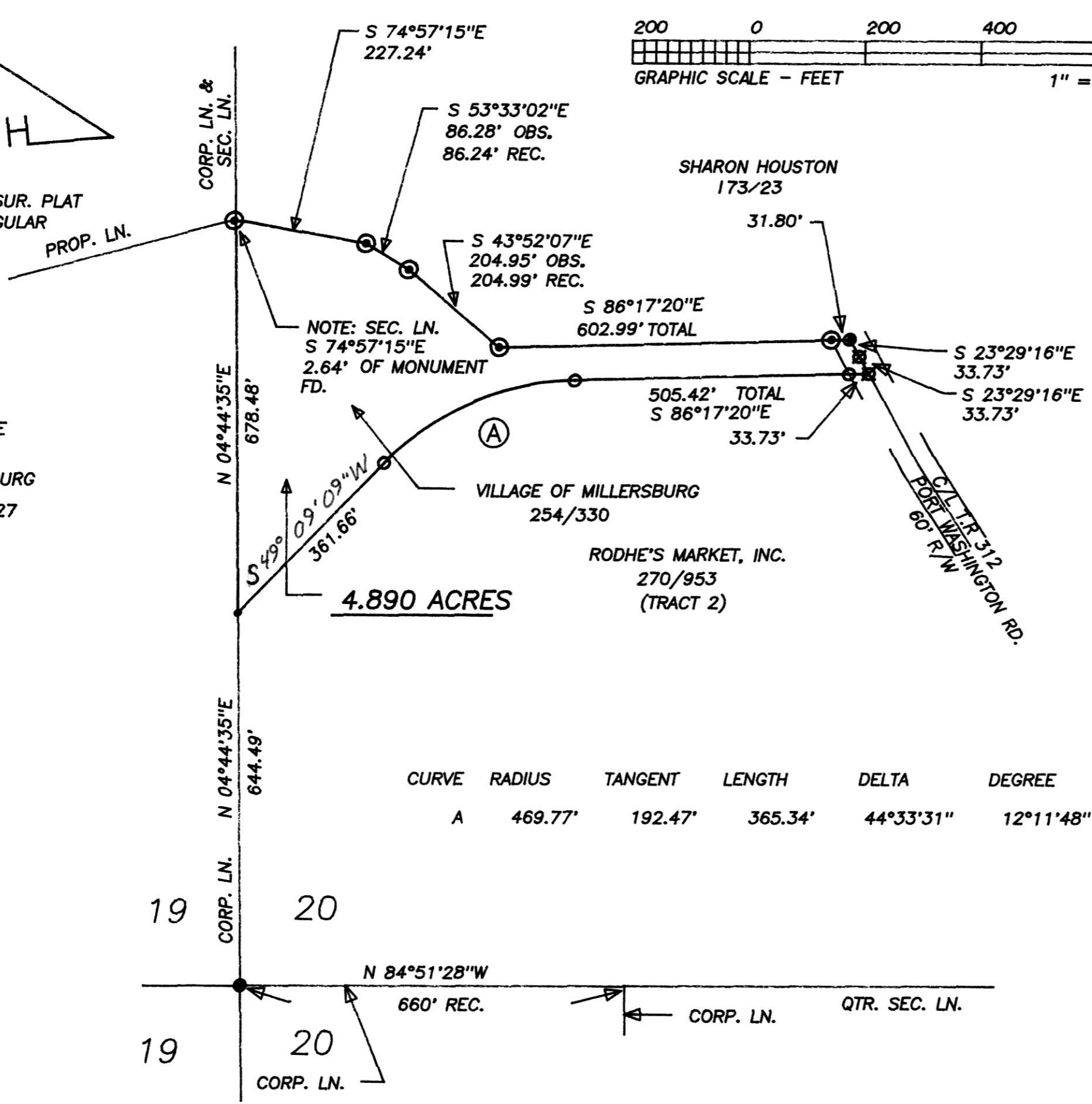


BEARINGS EST. FROM SUR. PLAT 2/245 & ARE FOR ANGULAR MEASUREMENT ONLY.



VOL. 16 PAGE 732

9800002313  
Filed for Record in  
HOLMES COUNTY, OH  
SALLY MILLER  
On 05-20-1998 At 12:31 pm.  
PLAT MED 21.60  
Book OR Vol. 16 Pg. 732 - 732  
o & a pg 337



- LEGEND:
- = STONE FD.
  - = 5/8" RE-BAR FD. UNLESS NOTED
  - = POINT-OF-DEPARTURE
  - = 5/8" X 30" RE-BAR W/PLASTIC I.D. CAP SET
  - ⊠ = R/R SPIKE SET
  - △ = R/R SPIKE FD.
  - ⊙ = CONC. MONUMENT W/ I.P. FD.

CURVE	RADIUS	TANGENT	LENGTH	DELTA	DEGREE	CHORD	CH.BEARING
A	469.77'	192.47'	365.34'	44°33'31"	12°11'48"	356.20'	S 71°25'55"W

REFERENCE DOCUMENTS:  
TAX MAPS  
DEEDS AS SHOWN  
SURVEY PLATS: 2/227 & 2/245

### PROPOSED ANNEXATION TO THE VILLAGE OF MILLERSBURG HOLMES COUNTY, STATE OF OHIO

APPROVED BY HOLMES COUNTY COMMISSIONERS

I HEREBY CERTIFY THAT THE HOLMES COUNTY COMMISSIONERS HAVE APPROVED THE DETACHMENT OF THIS TRACT OF LAND AS SHOWN HEREON FROM HOLMES COUNTY.

5-11-1998  
DATE  
*James W. Boker*  
CHAIRMAN, COUNTY COMMISSIONERS

RESOLUTION: 05-11-98-3

APPROVED BY MILLERSBURG PLANNING COMMISSION

I HEREBY CERTIFY THAT THIS PLAT FOR ANNEXATION WAS APPROVED BY THE MILLERSBURG PLANNING COMMISSION AT A MEETING HELD ON April 7, 1998.

BY *Richard A. Haven*  
MILLERSBURG PLANNING COMMISSION

TRANSFER NOT NECESSARY  
DATE May 19, 1998  
AUDITOR *Richard A. Haven*  
JC

9800002313  
ROBERT HINES ATTY  
MILLERSBURG,

APPROVED BY MILLERSBURG VILLAGE COUNCIL

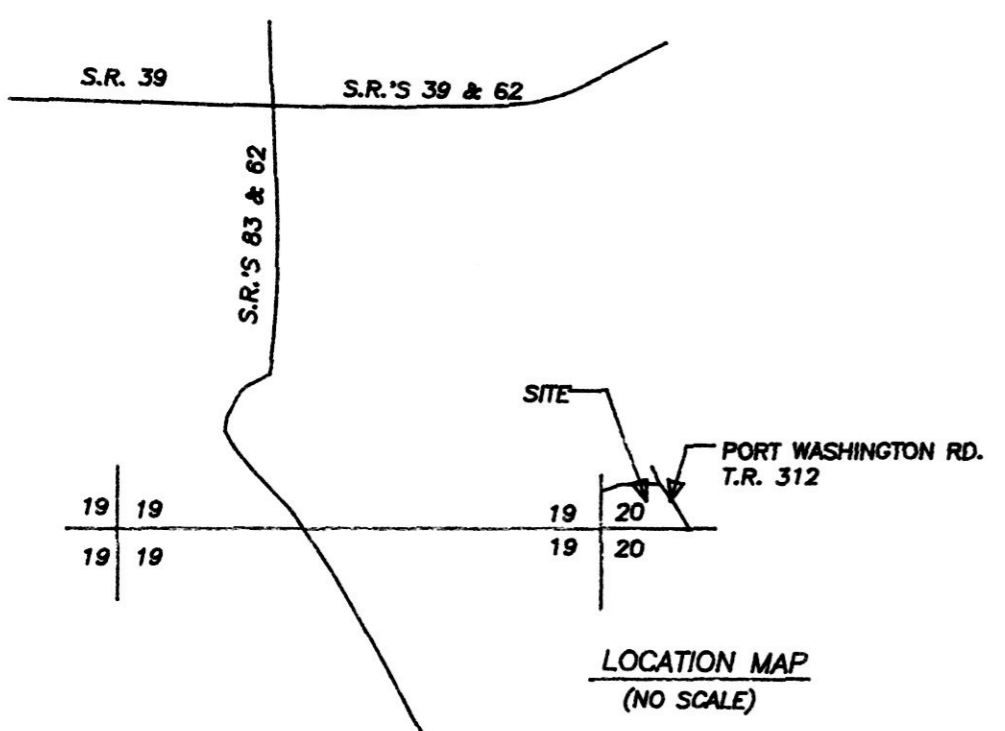
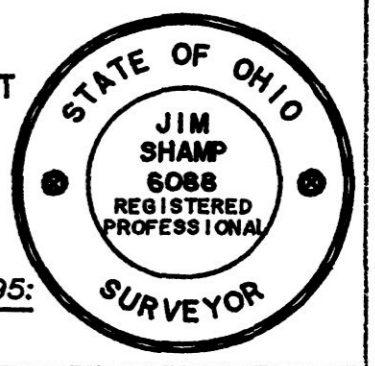
I HEREBY CERTIFY THAT THIS PLAT FOR ANNEXATION WAS APPROVED BY THE VILLAGE COUNCIL OF MILLERSBURG, OHIO AT A MEETING HELD ON 5-11-98, 1998.

BY *Karen S. Shaffer*  
VILLAGE CLERK

ORDINANCE: 98-108

I CERTIFY THIS PLAT & SURVEY TO BE CORRECT TO THE BEST OF MY KNOWLEDGE:

*Jim Shamp*  
JIM SHAMP, REG. SUR. NO. 5-6088  
OCTOBER 16, 1995: DATE



HEARTLAND Surveying, Inc.			
Jim Shamp			
5210 T.R. 257		MILLERSBURG, OH 44654	
PH: 330-674-4698			
SURVEY ANNEXATION TO THE VILLAGE OF MILLERSBURG		STATE OHIO	
COUNTY HOLMES	TWP. HARDY	RNG. 7 WEST	TWP. 9 NORTH
N.W. QTR. OF SEC. 20		940802.CRD 980226.PL	