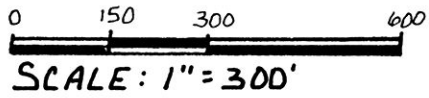
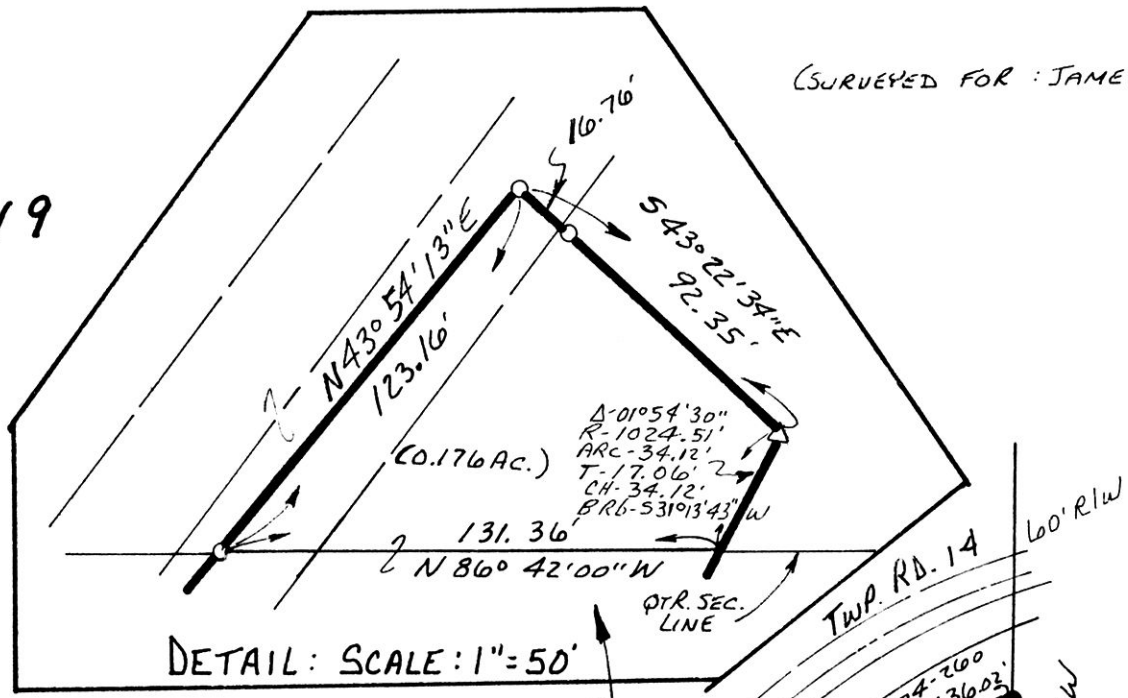


**RICHLAND TOWNSHIP**  
**N.W. & S.W. QTRS. SECTION 9**  
**T-8N;R-9W**  
**HOLMES COUNTY, OHIO**



● IRON PIN FOUND  
 Δ R.R. SPIKE SET  
 ○ 5/8" REBAR WITH I.D. CAP SET  
 I.D. CAP MARKED "BAKER 6938"



REFERENCES:

- DEED VOL. 264 PAGE 26
- DEED VOL. 274 PAGE 200
- DEED VOL. 294 PAGE 683

BEARINGS FROM PLAT VOL. 12 PAGE 2

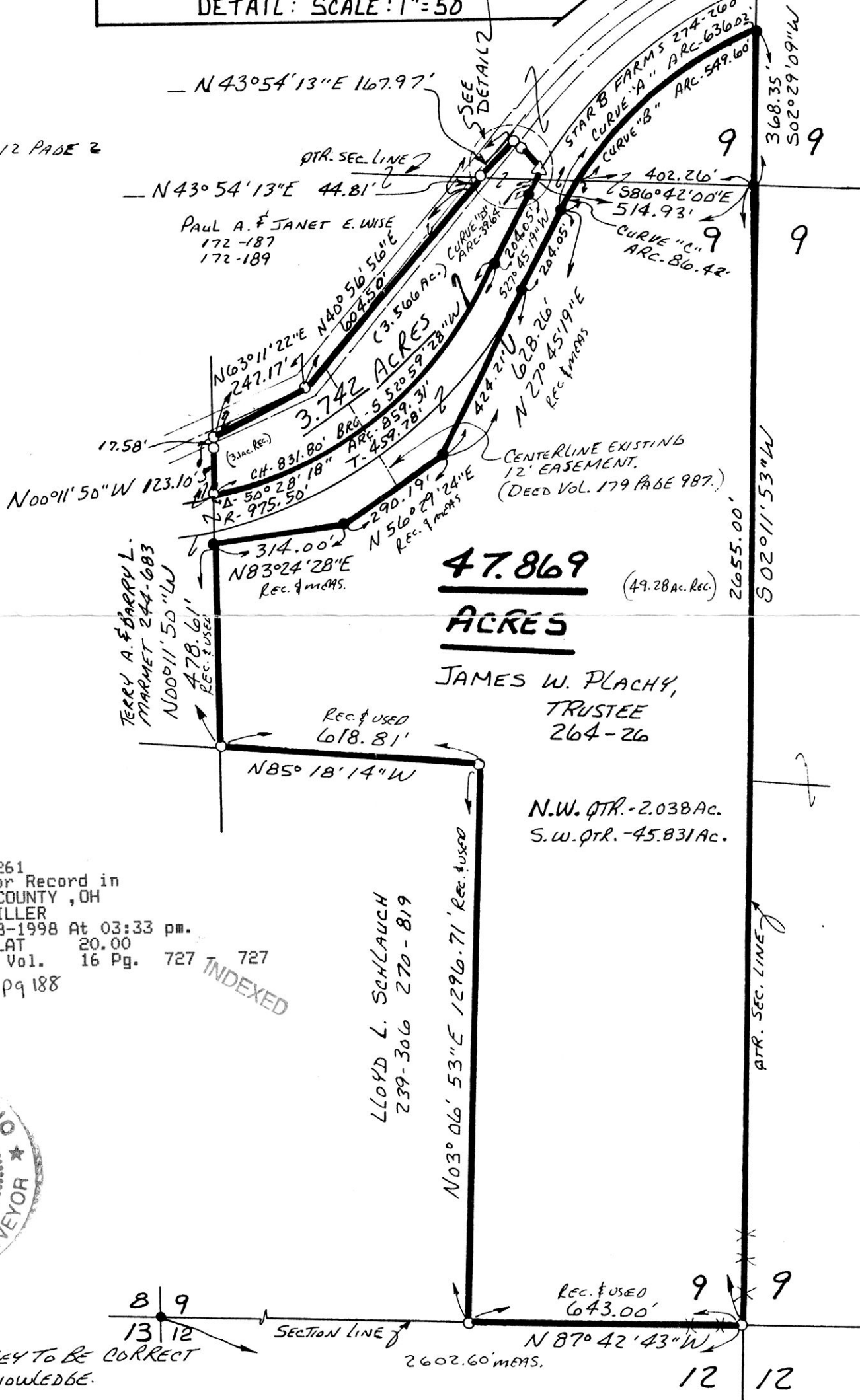
CURVE DATA

"A"  
 Δ- 39° 22' 27"  
 R- 925.52'  
 ARC- 636.02'  
 T- 331.15'  
 CH- 623.58'  
 BRG- N 47° 46' 24" E

"B"  
 Δ- 34° 01' 27"  
 R- 925.52'  
 ARC- 549.60'  
 T- 283.17'  
 CH- 541.56'  
 BRG- N 50° 26' 54" E

"C"  
 Δ- 05° 21' 00"  
 R- 925.52'  
 ARC- 86.42'  
 T- 43.24'  
 CH- 86.39'  
 BRG- N 30° 45' 41" E

"D"  
 Δ- 02° 13' 01"  
 R- 1024.51'  
 ARC- 39.64'  
 T- 19.82'  
 CH- 39.64'  
 BRG- S 29° 09' 41" W



9800002261  
 Filed for Record in  
 HOLMES COUNTY, OH  
 SALLY MILLER  
 On 05-18-1998 At 03:33 pm.  
 SMALL PLAT 20.00  
 Book OR Vol. 16 Pg. 727 727  
 OR vol 9 pg 188



I CERTIFY THIS SURVEY TO BE CORRECT TO THE BEST OF MY KNOWLEDGE.

Donald C. Baker  
 DONALD C. BAKER P.S. 6938  
 138 N. CLAY ST.  
 MILLERSBURG OHIO 44654  
 PH. (330) 674-4788  
 JULY 22, 1997  
 37897-M.L.DAVIS/FJM  
 F.C.C. - J.D. DARR

9800002261  
 HOLMES CTY TITLE  
 MILLERSBURG,

PLAT APPROVED  
 5/15/98-b