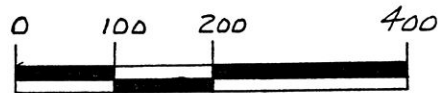


HARDY TOWNSHIP
1ST. QTR. LOT 12
T-9N; R-7W
HOLMES COUNTY, OHIO



SCALES: 1" = 200'

● IRON PIN FOUND

REFERENCES:

DEED VOL. 152 PAGE 557
 " " 34 " 500
 " " 259 " 475

PLAT VOL. 13 PAGE 170
 " " 13 " 183

BEARINGS FROM DEED VOL. 71 PAGE 257



I CERTIFY THIS SURVEY TO BE CORRECT
 TO THE BEST OF MY KNOWLEDGE.

Donald C. Baker

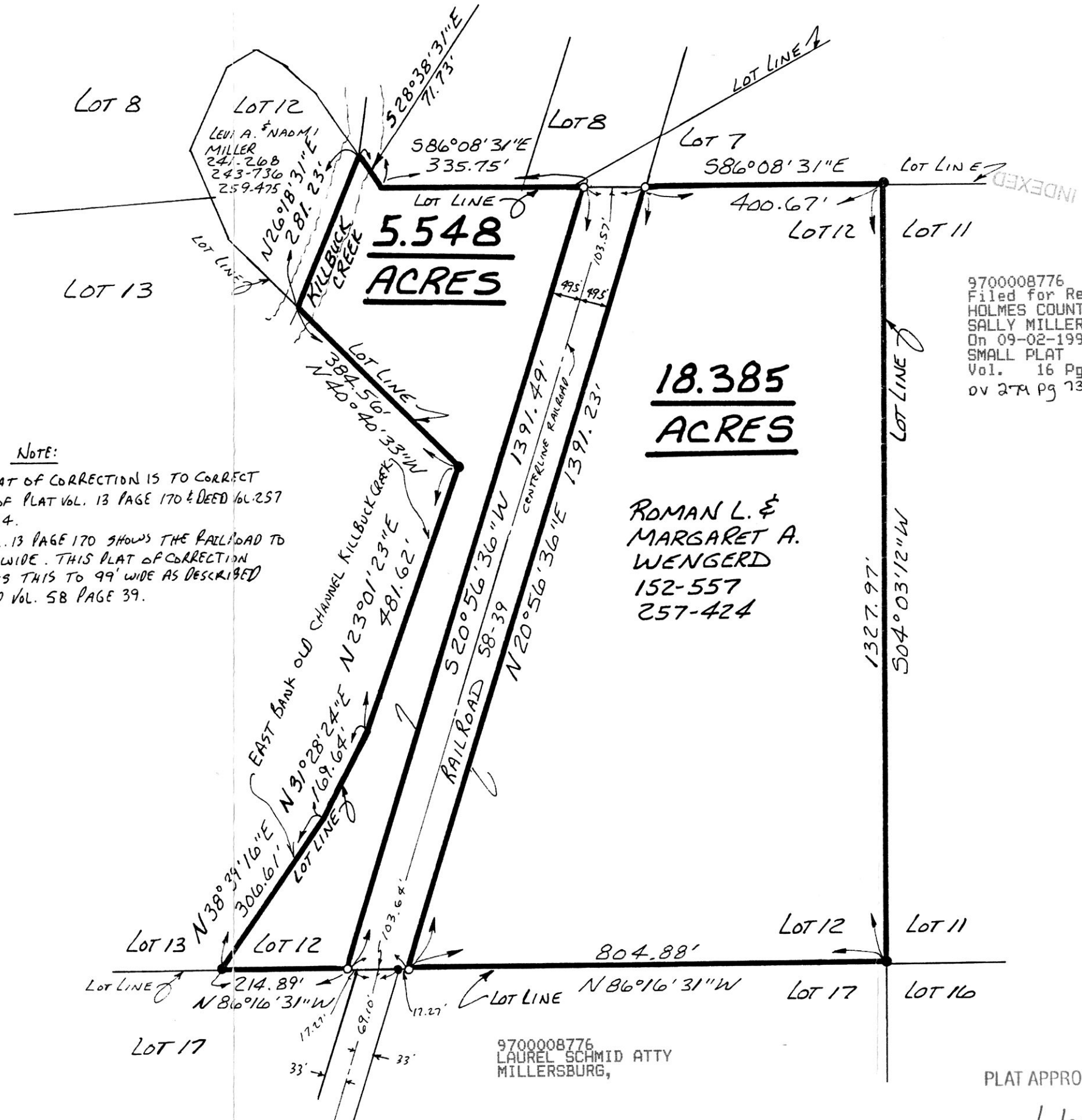
DONALD C. BAKER P.S. 6938

138 N. CLAY ST.
 MILLERSBURG, OHIO 44654
 PH. (330) 674-4788

M.L.D. JULY 23, 1997

D 24492K

PLAT OF CORRECTION



NOTE:
 THIS PLAT OF CORRECTION IS TO CORRECT
 LOT 12 OF PLAT VOL. 13 PAGE 170 & DEED VOL. 257
 PAGE 424.
 PLAT VOL. 13 PAGE 170 SHOWS THE RAILROAD TO
 BE 66' WIDE. THIS PLAT OF CORRECTION
 CORRECTS THIS TO 99' WIDE AS DESCRIBED
 IN DEED VOL. 58 PAGE 39.

9700008776
 Filed for Record in
 HOLMES COUNTY, OH
 SALLY MILLER
 On 09-02-1997 At 02:26 pm.
 SMALL PLAT 20.00
 Vol. 16 Pg. 525 - 525
 ov 274 pg 139

**ROMAN L. &
 MARGARET A.
 WENGERD**
 152-557
 257-424

9700008776
 LAUREL SCHMID ATTY
 MILLERSBURG,

PLAT APPROVED

9/2/97