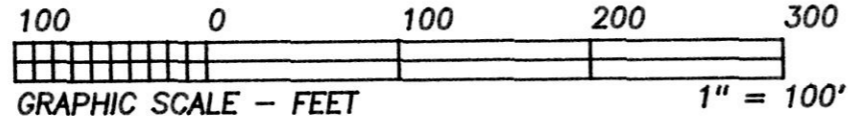


VOL 16 PAGE 467

CURVE	RADIUS	TANGENT	LENGTH	DELTA	DEGREE	CHORD	CH. BEARING
A	224.21'	84.16'	161.02'	41°08'47"	25°33'15"	157.58'	S 26°24'07"W
B	31.00'	24.29'	41.21'	76°10'17"	184°49'31"	38.24'	N 85°03'48"E
C	496.64'	106.43'	209.69'	24°11'27"	11°32'12"	208.13'	S 68°56'47"E
D	256.79'	30.41'	60.55'	13°30'33"	22°18'43"	60.41'	S 74°17'13"E
E	396.40'	50.21'	99.88'	14°26'13"	14°27'15"	99.62'	N 50°01'29"E
F	619.17'	95.38'	189.27'	17°30'52"	9°15'13"	188.53'	N 51°33'49"E
G	224.21'	26.23'	52.21'	13°20'35"	25°33'15"	52.10'	N 53°39'26"E



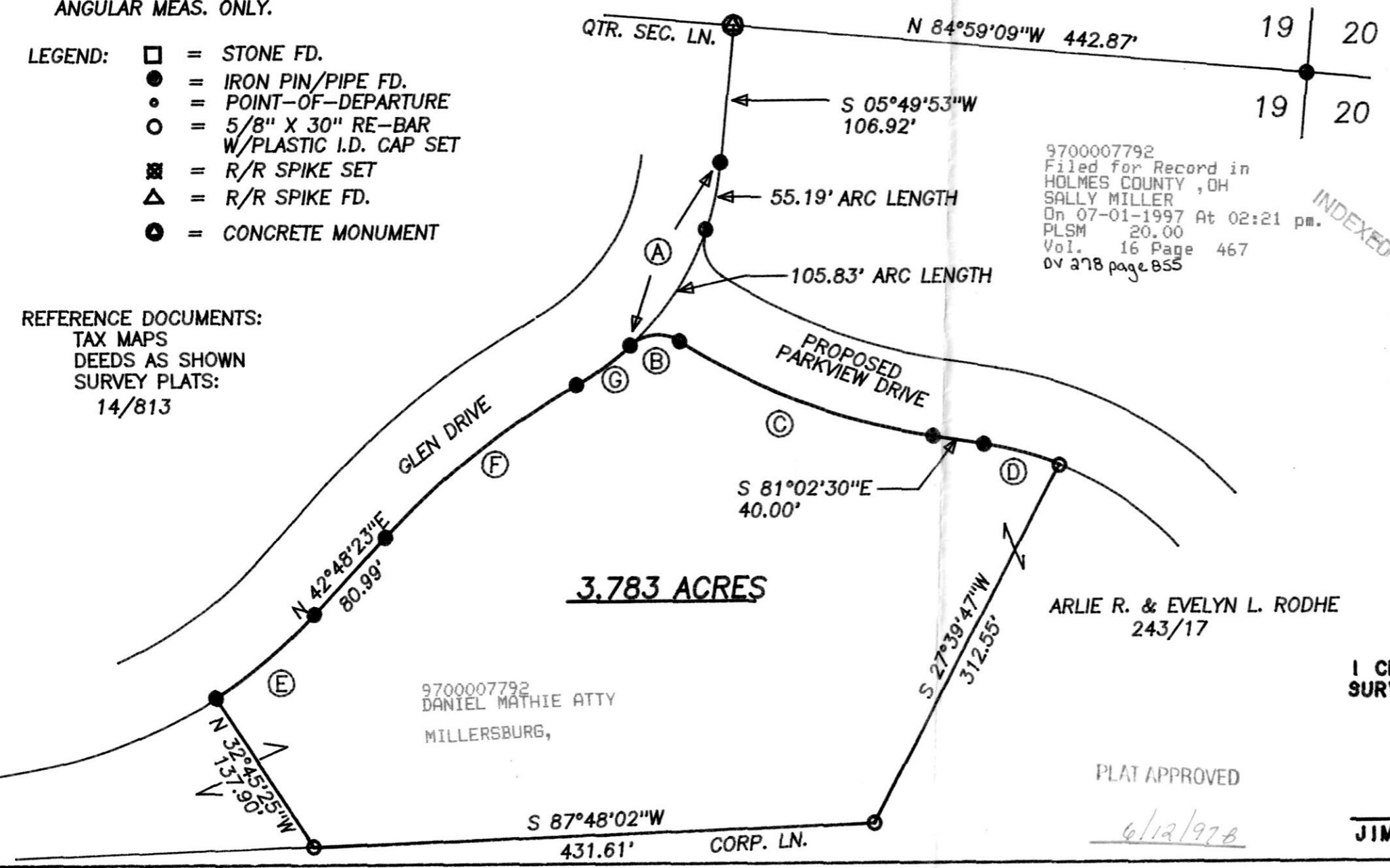
BEARINGS EST. FROM SUR. PLAT 14/813 AND ARE TO DENOTE ANGULAR MEAS. ONLY.

- LEGEND:
- = STONE FD.
  - = IRON PIN/PIPE FD.
  - = POINT-OF-DEPARTURE
  - = 5/8" X 30" RE-BAR W/PLASTIC I.D. CAP SET
  - = R/R SPIKE SET
  - ▲ = R/R SPIKE FD.
  - = CONCRETE MONUMENT

REFERENCE DOCUMENTS:  
TAX MAPS  
DEEDS AS SHOWN  
SURVEY PLATS:  
14/813

**HEARTLAND Surveying, Inc.**  
Jim Shamp  
5210 T.R. 257 MILLERSBURG, OH 44654  
PH: 330-674-4698

SURVEY		ARLIE RODHE		DATE		APRIL 18, 1997	
STATE	OHIO	COUNTY	HOLMES	TWP.	HARDY	RNG.	7 WEST
TWP.	9 NORTH	SECTION 19	VILLAGE OF MILLERSBURG	940601.CRD LAYERS 22-23	961028.PL	11/96	



9700007792  
Filed for Record in  
HOLMES COUNTY, OH  
SALLY MILLER  
On 07-01-1997 At 02:21 pm.  
PLSM 20.00  
Vol. 16 Page 467  
04 278 page 855

INDEXED

**LOT SPLIT**  
APPROVED BY THE  
VILLAGE OF MILLERSBURG  
PLANNING COMMISSION  
NO PLAT REQUIRED

*[Signature]*  
MILLERSBURG  
PLANNING COMMISSION  
DATE: 5/13/97



I CERTIFY THIS TO BE A TRUE PLAT OF A FIELD SURVEY COMPLETED ON JANUARY 21, 1997:

PLAT APPROVED

*[Signature]*  
JIM SHAMP, REG. SUR. NO. 9-6088