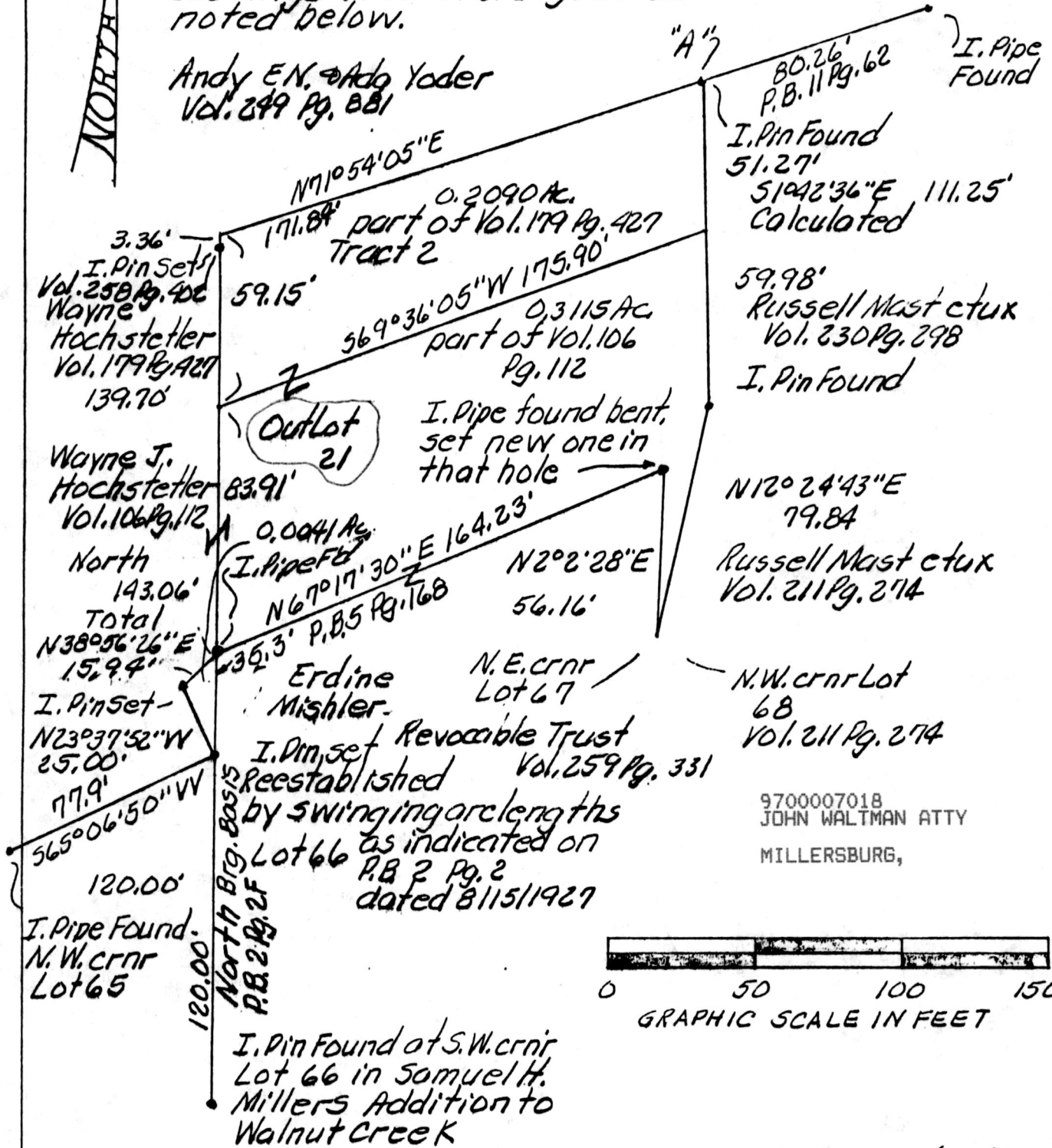


9700007018
Filed for Record in
HOLMES COUNTY, OH
On 05-13-1997 At 11:11 AM.
PLSM Vol. 20.00
16 Page 422
05/13/97 pg 226

Point "A" is South 7°52'01" West 1,286.27',
North 79°54'57" West 391.18', and
South 71°54'05" West 80.26' from
an iron pin at the N.E. corner of the
N.W. 1/4 of Sec. 20, T9N, R5W, of
Walnut Creek Twp., Hol. Co., Ohio.
Distances are from P.B. 11 Pg. 61, and
bearings from P.B. 2 Pg. 2 F as
noted below.

Andy E.N. Ado Yoder
Vol. 249 Pg. 881

NORTH



9700007018
JOHN WALTMAN ATTY
MILLERSBURG,

PLAT OF A SURVEY FOR
ERDINE MISHLER
Grantee

Known as part of the
N.W. 1/4 of Sec. 20, T9N,
R5W of Walnut Creek
Twp., Hol. Co., Ohio.
This land is in the unin-
corporated Village of
Walnut Creek.

Robert L. Kasner D.S. 5193
P.E. 28820
811190
11/18/95



APPROVED FOR TRANSFER ONLY
NO SUBDIVISION PLAT REQUIRED
(O.R.C. 711.001 & 711.131)
Lot(s) not for building unless
approved by Board of Health.
HOLMES CO. PLANNING COMM.

PLAT APPROVED

5/12/97

By CDM Date 5/9/97 Revised