

**PAINT TOWNSHIP
S.W. QTR. SECTION 6
T-14N ; R 11W
HOLMES COUNTY, OHIO**



SCALE: 1" = 60'

- STONE FOUND
- ▲ P.A. SPIKE FOUND
- IRON PIN FOUND
- △ P.A. SPIKE SET
- 0.518" REBAR WITH I.D. CAP SET
- I.D. CAP MARKED "BAKER 6938"

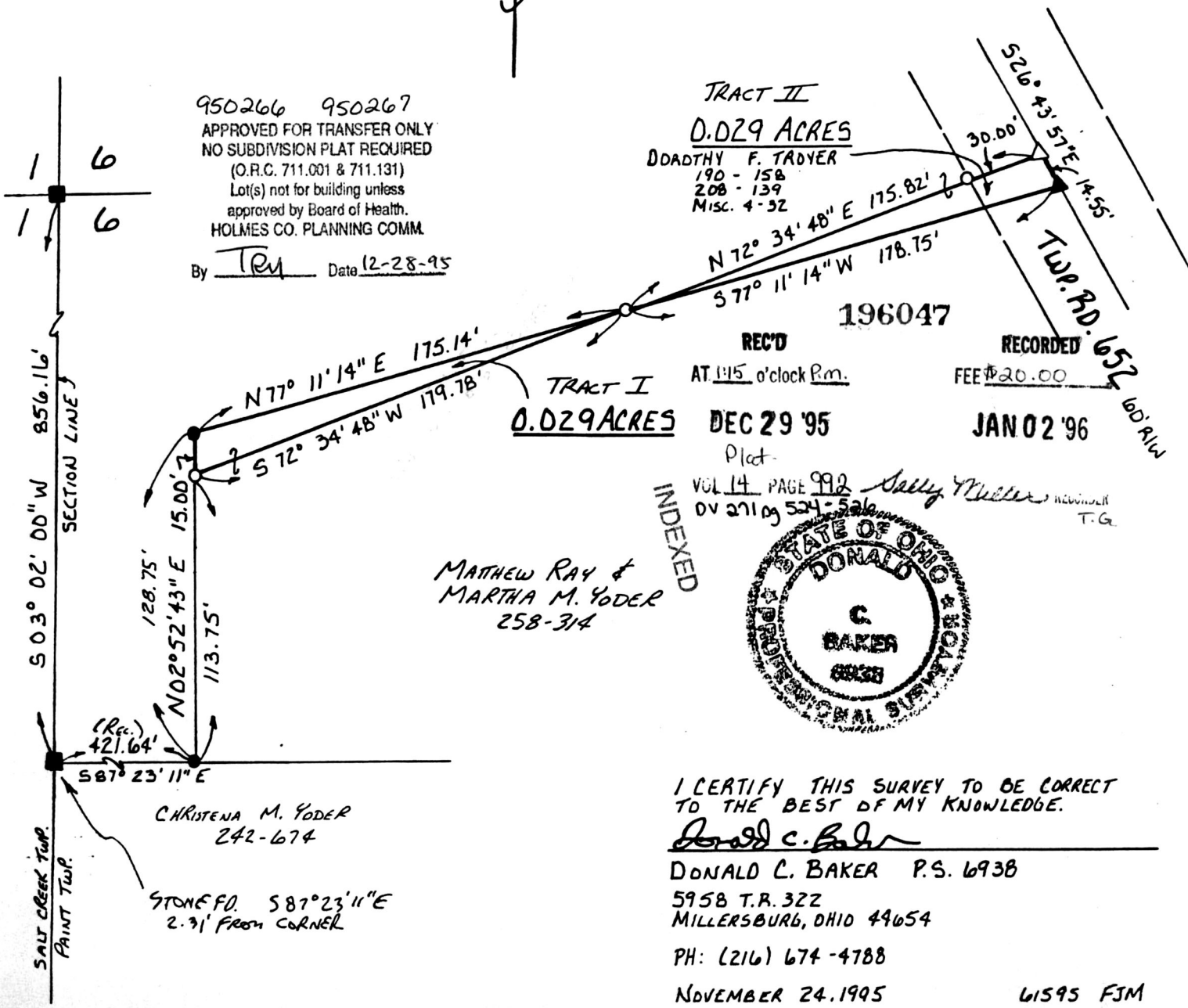
REFERENCES:

- DEED VOL. 222 PAGE 689
- DEED VOL. 190 PAGE 158
- DEED VOL. 208 PAGE 139
- DEED VOL. 258 PAGE 118
- DEED VOL. 233 PAGE 434

BEARINGS FROM PLAT VOL. 11 PAGE 9

NOTE:

TRACTS TO BE ADDED TO ADJOINERS



PLAT APPROVED

12/28/95