

PRAIRIE TOWNSHIP
N.W. QTR. SEC. 36
T-14N; R-13W
HOLMES COUNTY, OHIO

193493



0' 100' 200'
SCALE: 1" = 200'

SW-4543

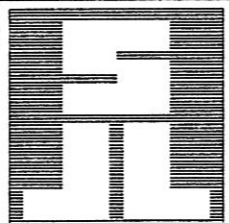
- ✚ COR. POST FD.
- I.P. FOUND
- ☆ R.R. SPK. SET
- I.P. SET (S.J.L. INC.)

REFERENCE SURVEY &
BASIS OF BEARING
P. 15-38 Z-665

Distances shown hereon are expressed in feet and decimal parts thereof, bearings are to an assumed meridian and are used to express angles only, iron pins or monuments were found or set as indicated hereon all of which I believe to be correct to the best of my knowledge.

Virgil D. Landis 6-29-95
Virgil D. Landis, P.S. #6551

**SHAFFER, JOHNSTON, LICHTENWALTER
& ASSOCIATES, INC.**
CONSULTING ENGINEERS - SURVEYORS
2585 CLEVELAND ROAD, WOOSTER, OHIO 44691
PHONE (216) 345-6377 FAX (216) 345-6725



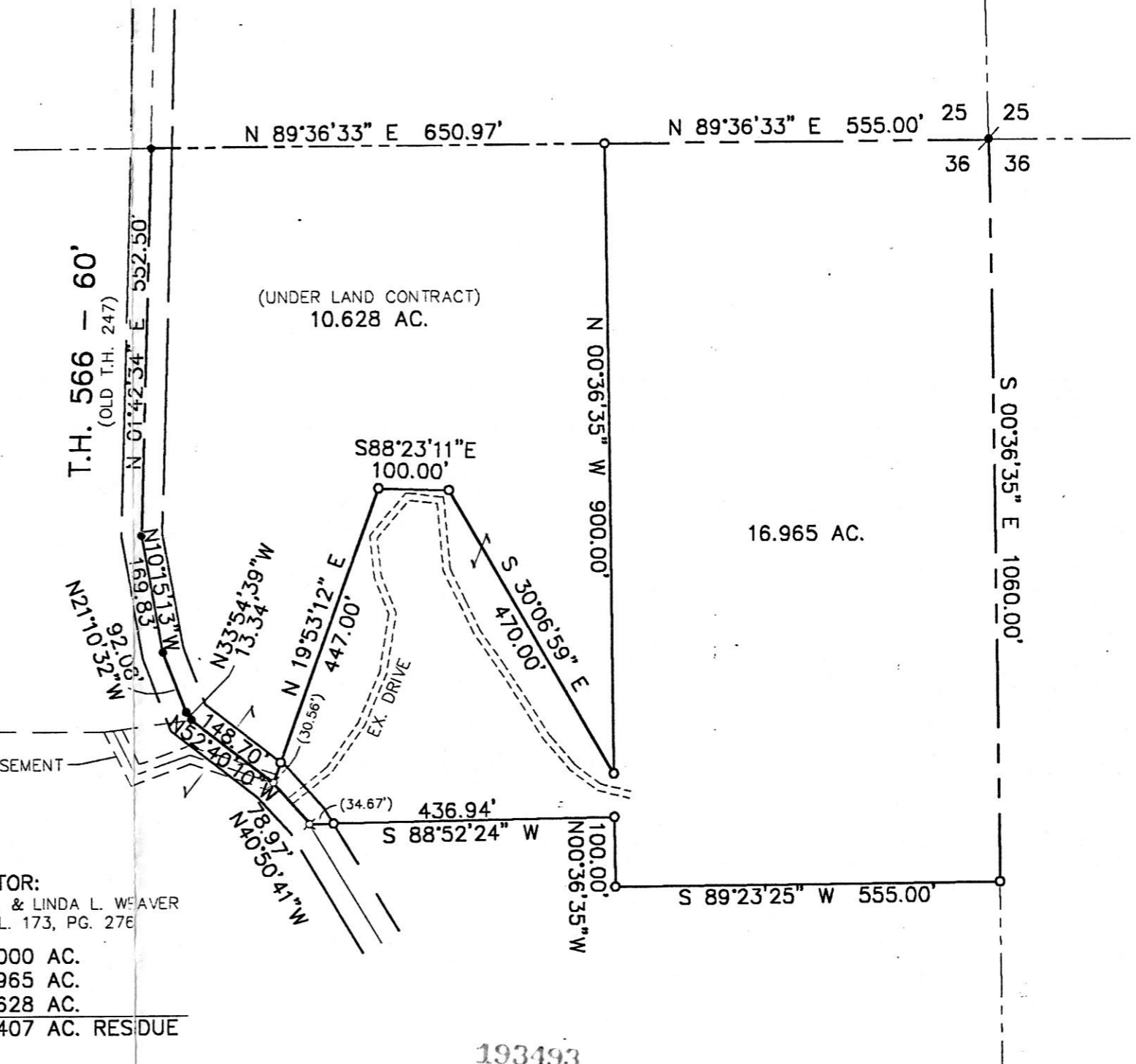
CARRIE A. WEAVER
VOL. 266, PG. 243
10.0 AC.

T.H. 566 - 60'
(OLD T.H. 247)

DRIVEWAY EASEMENT

GRANTOR:
JOHN R. & LINDA L. WEAVER
VOL. 173, PG. 276

70.000 AC.
- 16.965 AC.
- 10.628 AC.
42.407 AC. RESIDUE



193493

REC'D
AT 4:01 o'clock P.M.

RECORDED
FEE \$20.00

JUL 17 '95

JUL 18 '95

VOL 14 PAGE 862 *Sally Miller* RECOMMEND

B. Blair

PLAT APPROVED

2/12/95

Need Vol. 269 Page 435

VOL 14 PAGE 862