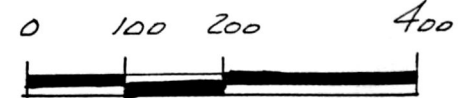


REFERENCE:

- DEED Vol. 203 PAGE 368
- " " 258 " 886
- " " 224 " 49
- " " 254 " 853
- PLAT Vol. 13 PAGE 175
- " " 10 " 860
- " " 10 " 267
- " " 8 " 294

BEARINGS FROM PLAT Vol. 13 PAGE 175

PRAIRIE TOWNSHIP  
 N.E. QTR. SECTION 5  
 T-13N; R-13W  
 HOLMES COUNTY, OHIO



- SCALE: 1" = 200'
- ▲ R.R. SPIKE FOUND
  - IRON PIN FOUND
  - △ R.R. SPIKE SET
  - 5/8" REBAR WITH I.D. CAP SET (I.D. CAP MARKED "BAKER 6938")



193088 INDEXED

REC'D AT 10:51 o'clock A.M. JUN 26 '95  
 RECORDED FEE \$20.00 JUN 27 '95  
 Plat VOL 14 PAGE 835 DV 269 pg 124  
 Sally Miller RECORDER  
 Laurel



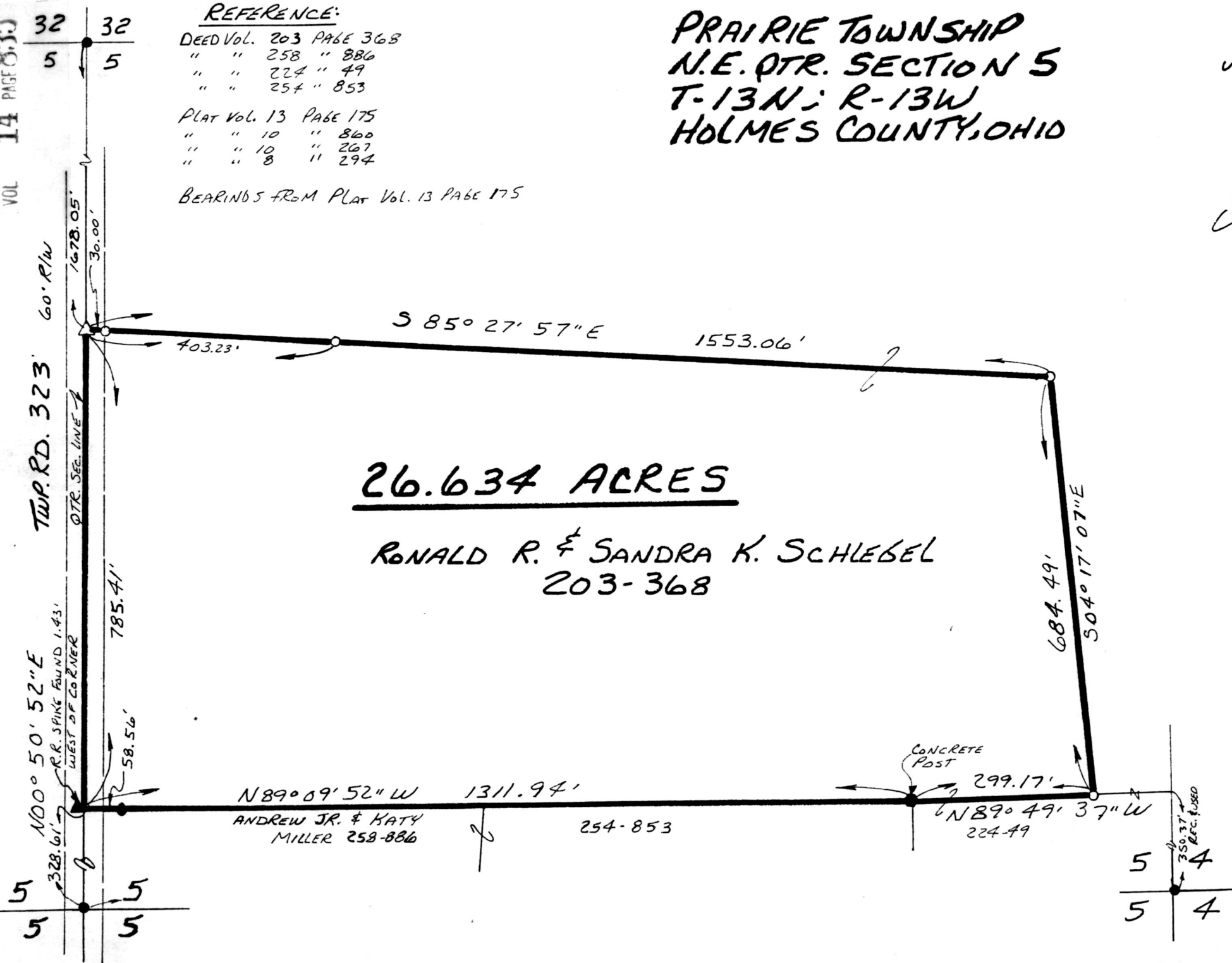
I CERTIFY THIS SURVEY TO BE CORRECT TO THE BEST OF MY KNOWLEDGE.

Donald C. Baker  
 DONALD C. BAKER P.S. 6938  
 5958 T.R. 322  
 MILLERSBURG, OHIO 44654  
 PH. (216) 674-4788  
 MAY 4, 1995

20495-MLS

PLAT APPROVED

6/23/95 B



26.634 ACRES

RONALD R. & SANDRA K. SCHLEGEL  
 203-368

N 89° 09' 52" W 1311.94'  
 ANDREW JR. & KATY MILLER 258-886

CONCRETE POST  
 299.17'  
 N 89° 49' 37" W 224.49'

5 4  
 5 4