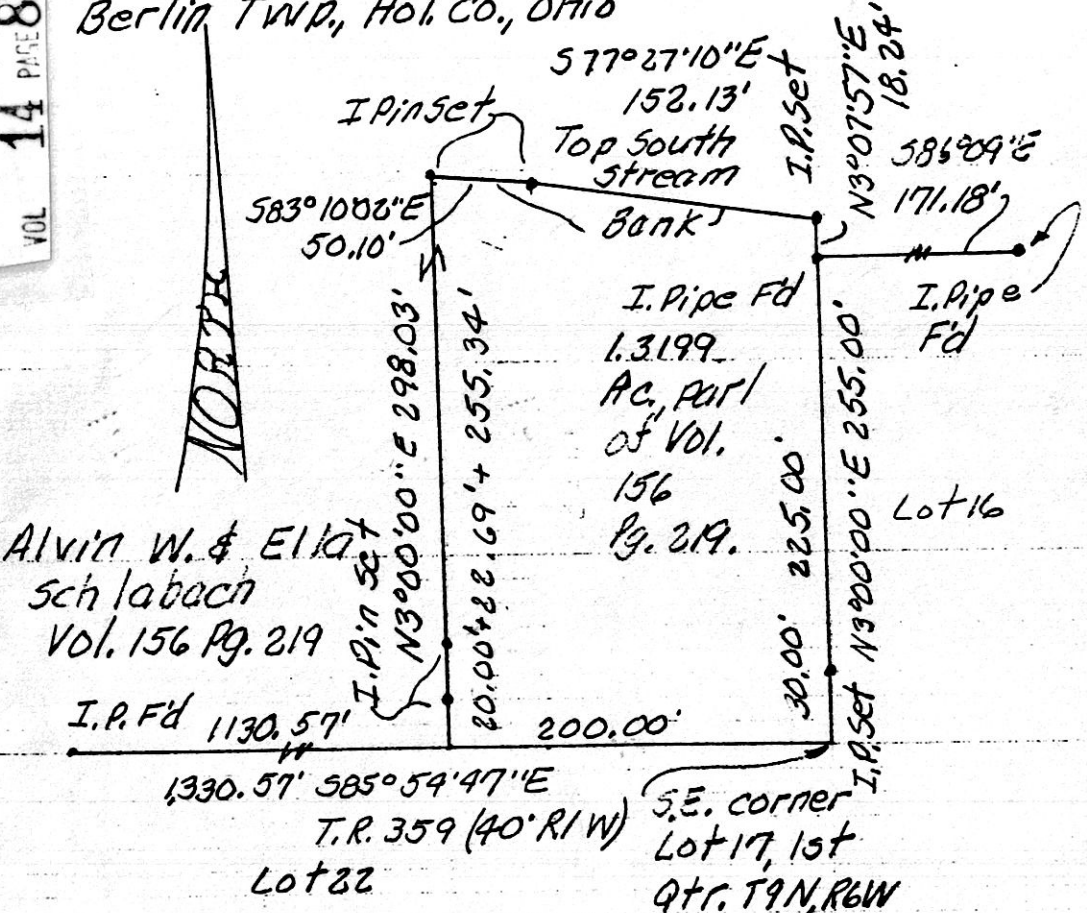


Lot 17, 1st Qtr., T9N, R6W  
Berlin TWP., Hol. Co., Ohio

192817



Alvin W. & Ella  
Schlabach  
Vol. 156 Pg. 219

577°27'10\"/>

I. Pipe Fd  
1.3199  
Ac. part  
of Vol.  
156  
Pg. 219.

Lot 16

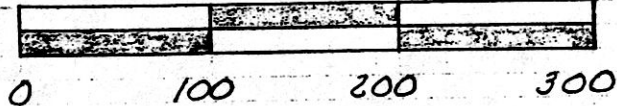
Known as part of Lot 17, 1st Qtr., T9N, R6W, of Berlin TWP.,  
Hol. Co., Ohio, and as part of Vol. 156 Pg. 219.  
Beginning at the S.E. corner of Lot 17 in T.R. 359;  
thence with the south line thereof, and on the south  
edge of T.R. 359 North 85° 54' 47\"/>

Survey and Description by Robert L. Kasner P.S. 5193

P.E. 28820  
5119195

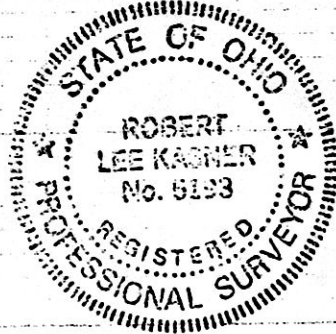
APPROVED FOR TRANSFER ONLY  
NO SUBDIVISION PLAT REQUIRED  
(O.R.C. 711.001 & 711.131)  
Lot(s) not for building unless  
approved by Board of Health.  
HOLMES CO. PLANNING COMM.

By TRM Date 5-29-95



GRAPHIC SCALE IN FEET  
Known as part of Lot 17, 1st  
Qtr., T9N, R6W, of Berlin  
Twp., Hol. Co., Ohio.

Robert L. Kasner P.S. 5193  
P.E. 28820  
518195



192817

REC'D  
At 4:11 o'clock pm

RECORDED  
FF \$ 20.00

JUN 05 '95

JUN 06 '95

PLAT APPROVED  
950096

Plat VOL 14 PAGE 823 Sully Miller RECORDER  
BY 26803 903

INDEXED

5/31/95 [Signature]