

BEARINGS EST. FROM PLAT 5/25

AREA OF ANNEXATION
 RODHE: 2.983 ACRES
 VILLAGE 2.066 ACRES
 TOTAL: 5.049 ACRES

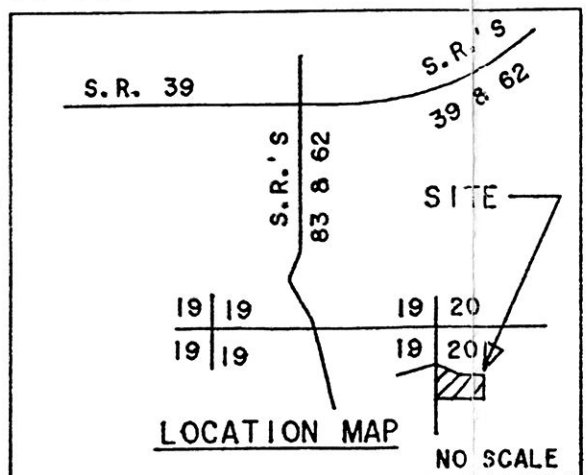
ARLIE R. & EVELYN L. RODHE
 DEED V. 243, P. 17



I CERTIFY THIS TO BE A TRUE PLAT OF A FIELD SURVEY COMPLETED ON JULY 7, 1994:

[Signature]

JIM SHAMP, REG. SUR. NO. S-6088



PROPOSED ANNEXATION TO THE VILLAGE OF MILLERSBURG
 HOLMES COUNTY, STATE OF OHIO
 HARDY TOWNSHIP
 T - 9 NORTH, R - 7 WEST
 S.W. QUARTER SECTION 20

APPROVED HOLMES COUNTY COMMISSIONERS

I HEREBY CERTIFY THAT THE HOLMES COUNTY COMMISSIONERS HAVE APPROVED THE DETACHMENT OF THESE TRACTS OF LAND AS SHOWN HEREON FROM HOLMES COUNTY.

February 6, 1995
 DATE

[Signature]
 CHAIRMAN, COUNTY COMMISSIONERS

APPROVED MILLERSBURG PLANNING COMMISSION

I HEREBY CERTIFY THAT THIS PLAT FOR ANNEXATION WAS APPROVED BY THE MILLERSBURG PLANNING COMMISSION AT A MEETING HELD ON

THE 2nd DAY OF MAY, 1995.

BY *[Signature]*
 PRESIDENT, MILLERSBURG PLANNING COMMISSION

APPROVED MILLERSBURG VILLAGE COUNCIL

I HEREBY CERTIFY THAT THIS PLAT FOR ANNEXATION WAS APPROVED BY THE VILLAGE COUNCIL OF MILLERSBURG, OHIO AT A MEETING HELD ON

THE 22 DAY OF May, 1995.

BY *[Signature]*
 VILLAGE CLERK

RECORDER 192688

I HEREBY CERTIFY THAT THIS PLAT WAS RECEIVED FOR RECORD ON MAY 30 1995, 1995 AT 2:33 PM

AND WAS RECORDED IN PLAT BOOK 14, PAGE 813 ON MAY 31 1995, 1995.

FEE \$20.00
 DV 268 pg 746

BY *[Signature]*
 RECORDER, HOLMES COUNTY, OHIO

PLAT PREPARED BY HEARTLAND SURVEYING, INC.
 5210 T.R. 257, MILLERSBURG, OHIO 44654
 PH: 216-674-4698

INDEXED

TRANSFER NOT NECESSARY
 DATE May 30, 1995
 AUDITOR Richard A. Gray

940708

PLAT APPROVED
 9-16-94