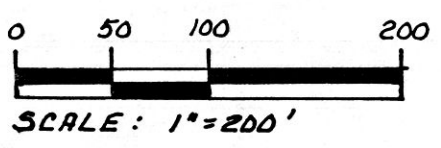
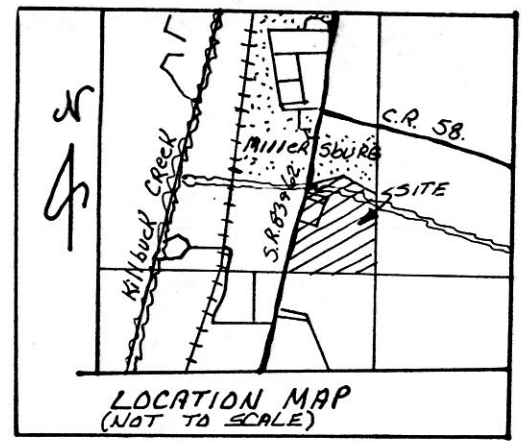
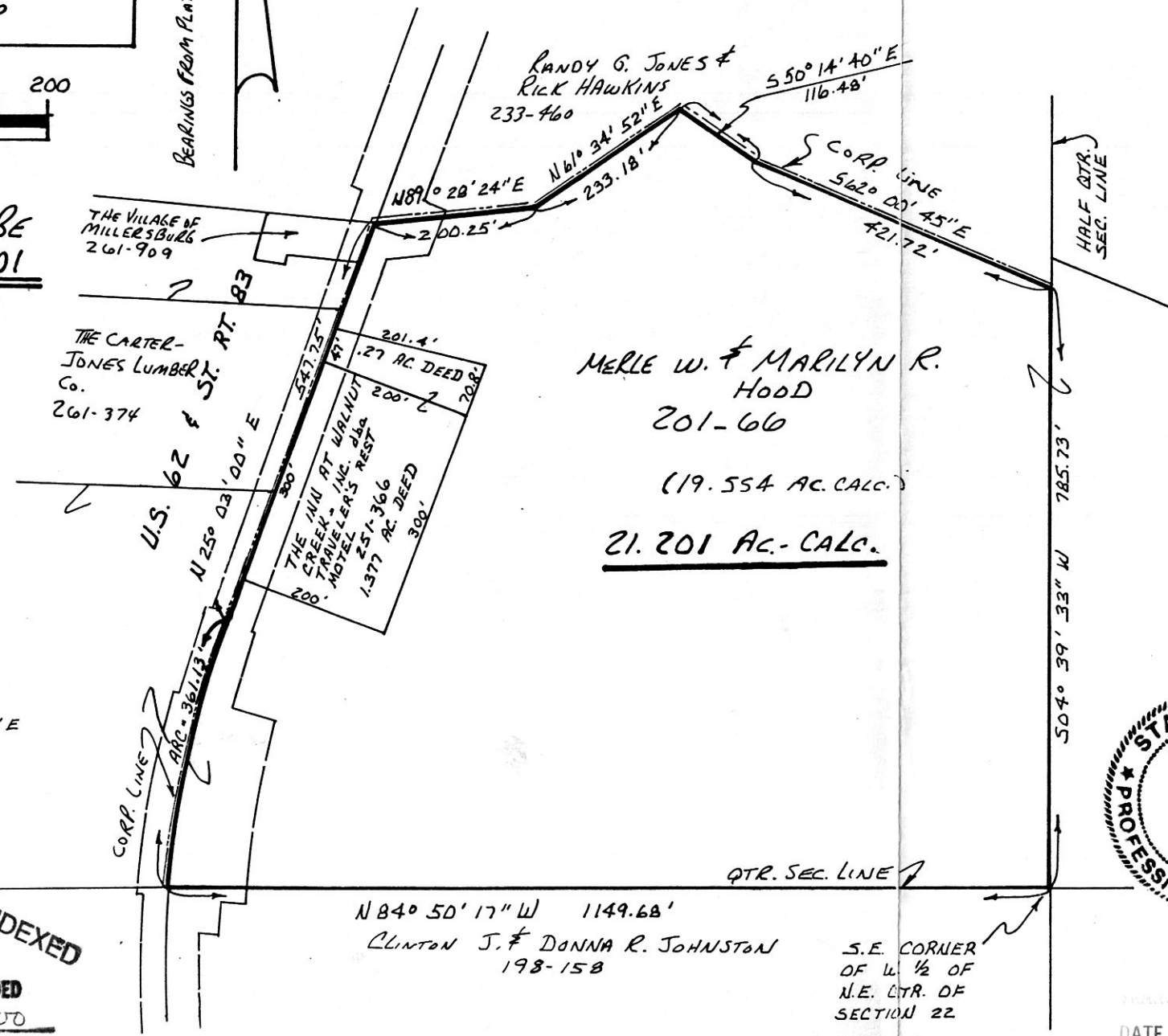


# PROPOSED ANNEXATION TO THE VILLAGE OF MILLERSBURG

HARDY TOWNSHIP  
N.E. QTR. SEC. 22  
T-9N & R-7W  
HOLMES COUNTY, OHIO



TOTAL ACRES TO BE ANNEXED - 21.201



CURVE DATA  
R = 1412.55'  
Δ = 14° 38' 54"  
CHD = 360.15'  
BRG = N17° 43' 32" E  
T = 181.56'  
ARC = 361.13'



APPROVAL OF THE HOLMES COUNTY COMMISSIONERS  
I HEREBY CERTIFY THAT THE HOLMES COUNTY COMMISSIONERS HAVE APPROVED THE DETACHMENT OF THIS TRACT OF LAND, AS SHOWN HEREON, FROM HOLMES COUNTY.  
9-19-94, 1994 Leah W. Miller  
DATE CHAIRMAN C. COMMISSIONERS

APPROVAL OF THE MILLERSBURG PLANNING COMMISSION  
I HEREBY CERTIFY THAT THIS PLAT FOR ANNEXATION WAS APPROVED BY THE MILLERSBURG PLANNING COMMISSION AT A MEETING HELD ON THE 5<sup>TH</sup> DAY OF July, 1994.  
Will [Signature]  
PRESIDENT, MILLERSBURG PLANNING COMMISSION

APPROVAL OF THE MILLERSBURG VILLAGE COUNCIL  
I HEREBY CERTIFY THAT THIS PLAT FOR ANNEXATION WAS APPROVED BY THE VILLAGE COUNCIL OF MILLERSBURG, OHIO AT A MEETING HELD ON THE 27 DAY OF December, 1994.  
Wood S. Shaffer  
VILLAGE CLERK

RECORDER  
I HEREBY CERTIFY THAT THIS PLAT WAS RECEIVED FOR RECORD ON \_\_\_\_\_, 1994 AT \_\_\_\_\_, AND WAS RECORDED IN PLAT BOOK \_\_\_\_\_ ON PAGE \_\_\_\_\_ ON \_\_\_\_\_, 1994. FEE \_\_\_\_\_.  
RECORDER, HOLMES Co., OHIO

SURVEYORS CERTIFICATION  
I HEREBY CERTIFY THAT THIS PLAT WAS PREPARED ON BEHALF OF THE PROPERTY OWNERS FROM EXISTING SURVEYS AND DEEDS OF RECORD THIS 2<sup>ND</sup> DAY OF SEPT., 1994.  
Donald C. Baker  
DONALD C. BAKER P.S. 6938  
5958 F.R. 322  
MILLERSBURG OHIO 44654  
PH (216) 674-4788

TRANSFER NOT NECESSARY  
DATE December 29, 1994  
AUDITOR Richard A. Hower

190688  
REC'D AT 3:05 o'clock P.M.  
DEC 29 '94

RECORDED FEE #20.00  
DEC 30 '94  
Plat Sally Miller RECORDER  
V. of Mleg.

PLAT APPROVED  
9-16-94