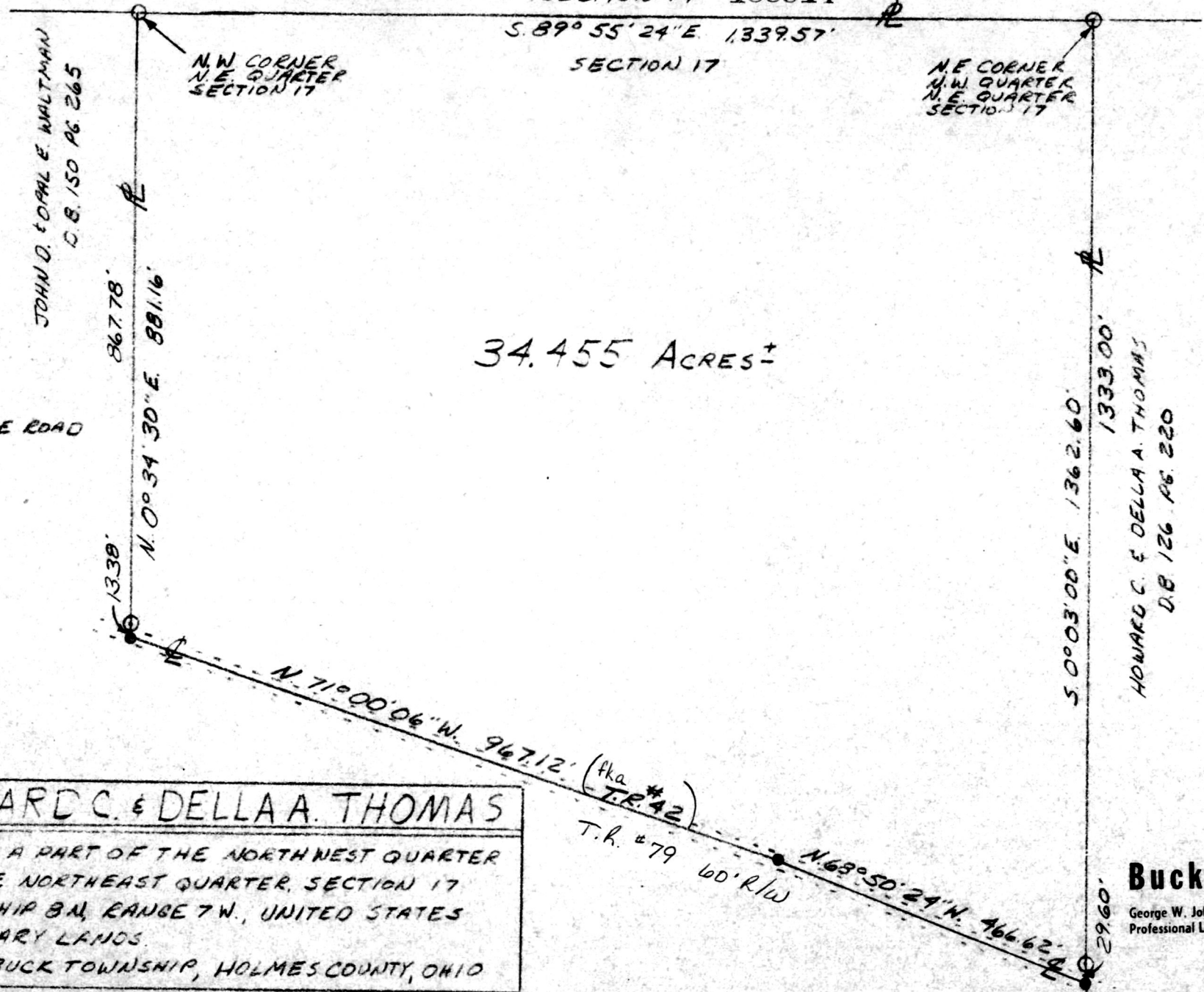


SECTION 14 188914  
S. 89° 55' 24" E. 1339.57'  
SECTION 17

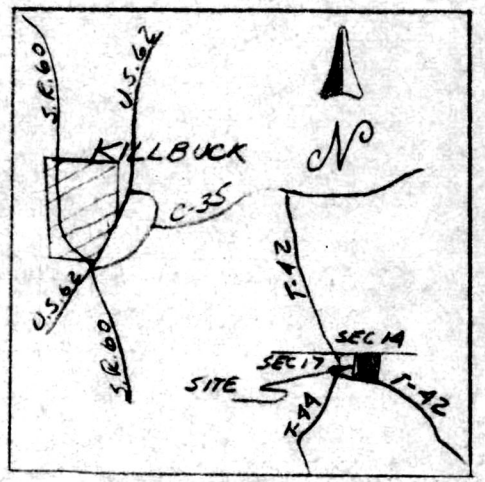


34.455 ACRES ±

JOHN D. & PAUL E. WALTMAN  
D.B. 150 PG 265

N.E. CORNER  
N.W. QUARTER  
N.E. QUARTER  
SECTION 17

HOWARD C. & DELLA A. THOMAS  
D.B. 126 PG. 220



LOCATION MAP  
NO SCALE

LEGEND

- IRON PIPE SET
- PT. IN CENTER LINE ROAD
- EDGE ROADWAY



**HOWARD C. & DELLA A. THOMAS**

BEING A PART OF THE NORTHWEST QUARTER  
OF THE NORTHEAST QUARTER, SECTION 17  
TOWNSHIP 8N, RANGE 7W, UNITED STATES  
MILITARY LANDS.  
KILLBUCK TOWNSHIP, HOLMES COUNTY, OHIO

SCALE: 1"=200' DATE: AUGUST, 1978

INDEXED  
188914

REC'D  
AT 3:01 o'clock P.m.

RECORDED  
FEE \$20.00

AUG 11 '94

AUG 12 '94

Plat.  
VOL 14 PAGE 578 *Sally Miller* RECORDER  
Deed vol. 265 pg 516 *may*

**Buckeye Land Surveying, Inc.**  
George W. Johnson 215 South Fifth Street, R. • Coshocton, Ohio 43812 (614) 622-4211  
Professional Land Surveyor "Service is more than a promise"

STATE OF OHIO  
I HEREBY CERTIFY THAT THIS PLAT IS A  
TRUE DELINEATION OF A SURVEY BY  
GEORGE W. JOHNSON P.S. 5252  
*George W. Johnson*

as to date 1978  
PLAT APPROVED  
8/2/94 B