

0 100 200 300
GRAPHIC SCALE IN FEET

NORTH

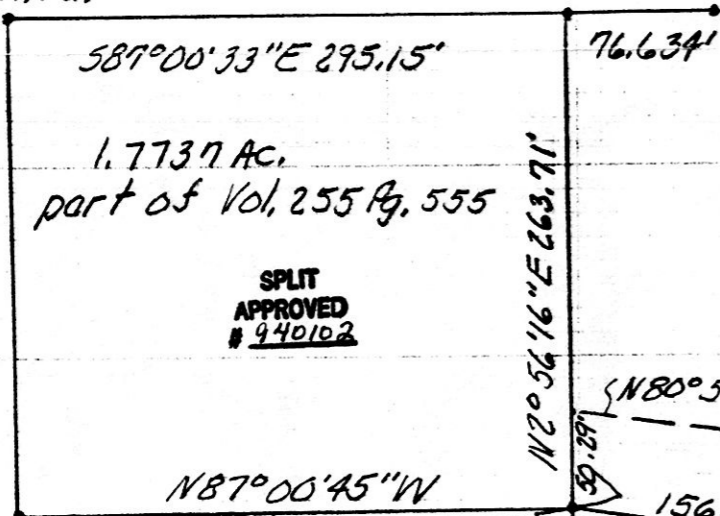
Dean Smith & Mary Elias
Vol. 242 Pg. 44
P.B. 10 Pg. 747

PLAT OF A SURVEY FOR
OTHA L. DAYE
Grantor
Known as part of the N, E, '14
of N.E. '14 of Sec. 28, T18N, R14W
W, of Ripley Twp, Hol. Co. Ohio.
Robert L. Kasner P.S. 5193
P.E. 28820
4/4194

R.R. 5, Fd N.E. crnr Sec. 28,
T18N, R14W of Ripley
Twp, Hol. Co., Ohio in
S.R. 226 & C.R. 51 inter-
section

Frank P. Jr. & Deborah A. Smith
Vol. 248 Pg. 797 P.B. 13 Pg. 119

I. Pin Fd. I. Pin Set I. Pin Fd.



1.7737 AC.
part of Vol. 255 Pg. 555

SPLIT
APPROVED
940102

Otha L. Daye
Vol. 255 Pg. 555



50.00' + 931.80'
C.R. 51 981.80' Total

60' RW

APPROVED
No Plat Required
Holmes Co. Plan. Comm.
By TRM
Date 6-15-94

N87°00'45\"/>

N87°00'45\"/>

50' Easement
N87°00'45\"/>

I. Pin Fd. 587°00'45\"/>

I. Pin Fd.

I. Pin Fd.

290.81'

I. Pin Fd.

580°56'44\"/>

156.32'

156.32'

217.31'
I. Pin Set

I. Pin Fd.

587°00'45\"/>

I. Pin Fd.

519.02' + 24.26'
Evelyn P. Nommay Cullins &
George W. Cullins
Vol. 242 Pg. 712 P.B. 13 Pg. 61

These 1.7737, 1.4759, & 2.000 acre parcels are
not approved for any use that generates
Wastewater

John Damp 188252 6/21/94
Sanitarian Date

REC'D
AT 8:30 o'clock AM

RECORDED
FEE \$ 20.00

INDEXED

JUN 27 '94

JUN 28 '94

VOL 14 PAGE 540
Deed vol. 264 pg 1007

Fence Post Corner 417.42'

1.4579 AC
part of
Vol. 255
Pg. 555

2.000 AC.
part of Vol. 255
Pg. 555

I. Pin Fd.

587°00'45\"/>

I. Pin Fd.

Evelyn P. Nommay Cullins &
George W. Cullins
Vol. 242 Pg. 712

524.34' + 18.94'

I. Pin Fd.

50.00' Easement

587°00'45\"/>

543.28'

50.00' N2°56'16\"/>

N3°00'00\"/>

350.90'

200.45' N3°00'00\"/>

50.00' + 150.45'

200.45'

200.45'

50.00'

I. Pin Fd. in C.R. 51 at
S.E. crnr N.E. '14 of
N.E. '14 of Sec. 28,
T18N, R14W of Ripley
Twp., Hol. Co., Ohio

I. Pin Fd. I. Pin Set I. Pin Fd.
Carl E. & Margaret V. Lee Vol. 192 Pg 588

I. Pin Fd. N87°00'45\"/>
Donald R. & Cheryl A. Clark Vol. 255 Pg. 339

I. Pin Fd.

PLAT APPROVED
6-24-94

VOL 14 PAGE 540