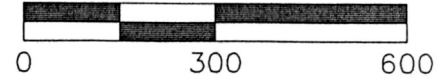


RIPLEY TOWNSHIP
HOLMES COUNTY
NE & NW QTRS.
SECTION 18
T-17N, R-14W



Scale In Feet

Basis of Bearings:
Plat Vol. 10, Page 507

- Stone Fd.
- I. P. Found
- I. P. Set 5/8" Rebar w/
Cap marked "ENGINEERING
ASSOCIATES, INC."
- ▲ RR Spike Found
- △ RR Spike Set

Grantors:
James F.T. and June Campbell
Deed Vol. 148, Pg 377

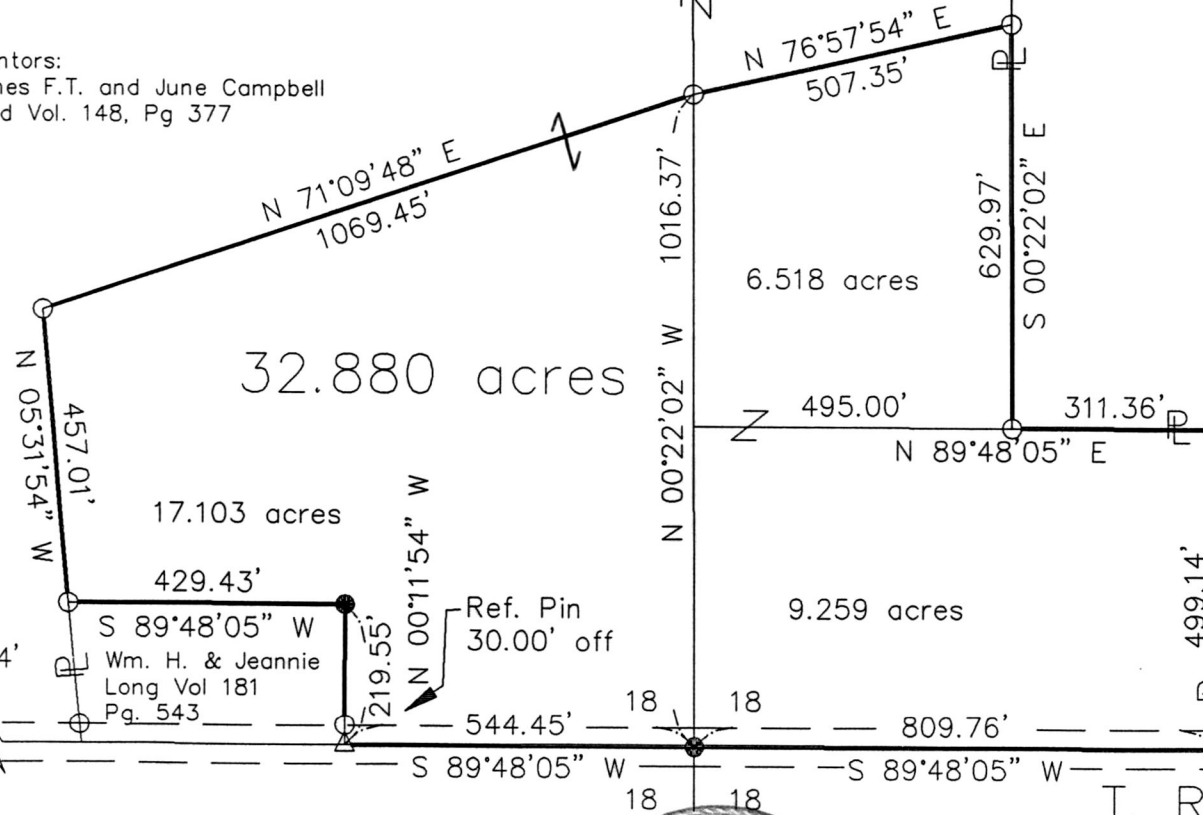
Deed Vol. 133
Page 339

Floyd and Eileen Wachtel
15.23 ac
Vol 112, Pg 461
Vol 117, Pg 129
Vol 117, Pg 141
Vol 118 Pg 307
Vol 118, Pg 308

187997

INDEXED

N 00°09'55" W



32.880 acres

17.103 acres

9.259 acres

Acc'd JUN 08 1994

Recorded JUN 09 1994

Plat Vol 14
bv 264 pg 745

At 9:06 O'CLOCK AM

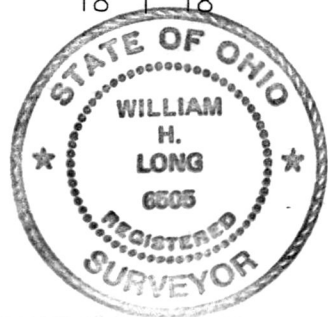
Holmes Co. Ohio Fee \$20.00

Pg. 508 Recorder Sally Miller

Dan

I hereby certify that this is a true
delineation of a survey made by
ENGINEERING ASSOCIATES INC. of
Wooster, Ohio.

William H. Long 4-11-94
William H. Long, P.S. #6505 Date



References:
Plat Vol 10, Pg 507
Plat Vol 14, Pg 119

PLAT APPROVED
6/16/94 B

VOL 14 PAGE 528