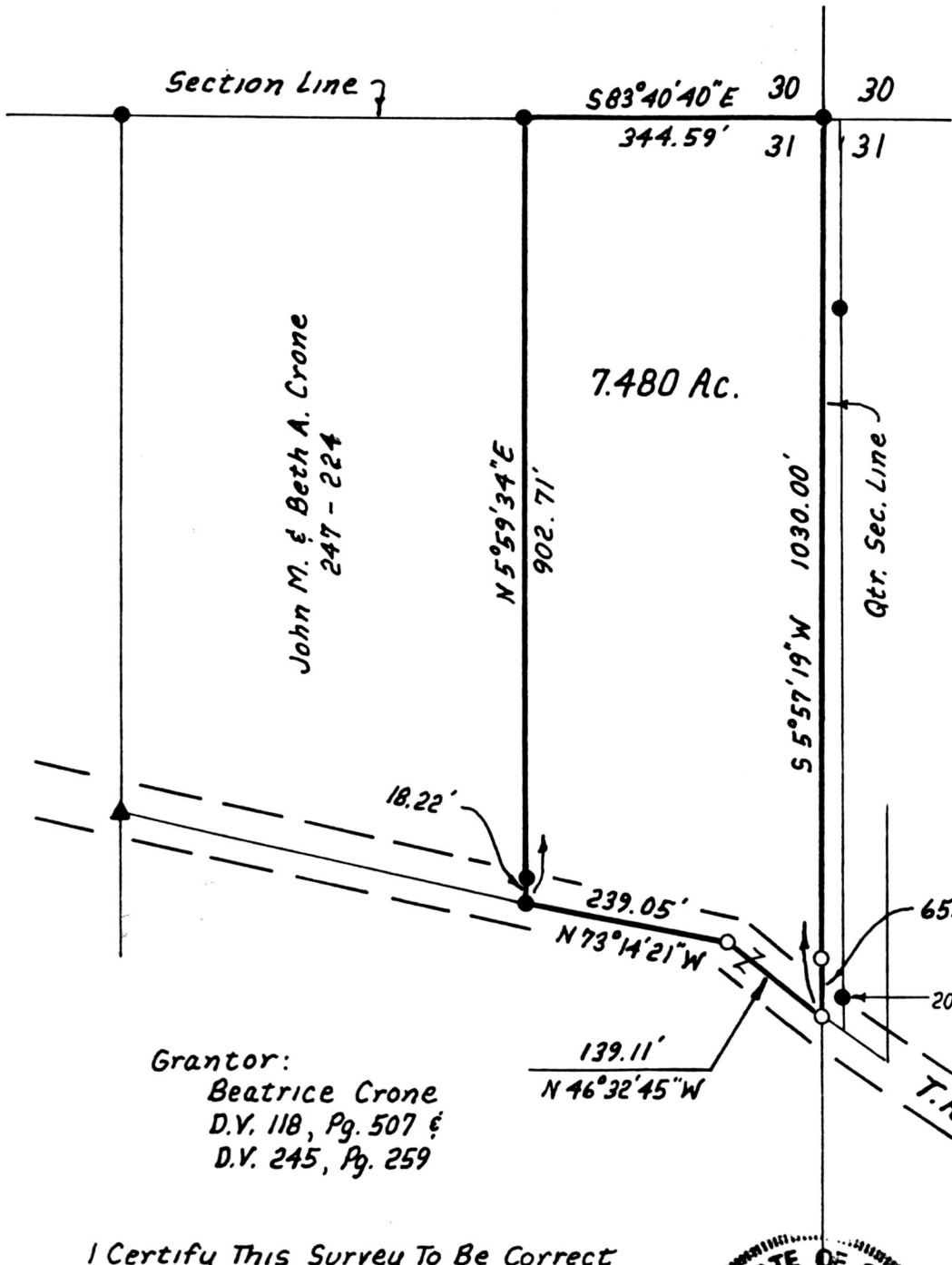


PRAIRIE TOWNSHIP
HOLMES COUNTY, OHIO
N.W. QTR., SEC. 31, T-14N, R-13W

187454



Bearings Based On
Plat Vol. 12, Pg. 433

- References:
- Plat Vol. 12, Pg. 433
 - Plat Vol. 12, Pg. 447
 - Plat Vol. 7, Pg. 807

- Iron Pin Found
- ▲ RR. Spike Found
- Iron Pin Set (5/8" Rebar With Yellow Cap Marked "LONG 7115.")

Grantor:
Beatrice Crone
D.V. 118, Pg. 507 &
D.V. 245, Pg. 259

I Certify This Survey To Be Correct
To The Best Of My Knowledge.

Donald G. Long 4-5-94
Donald G. Long P.S. 7115
LONG SURVEYING, INC.
12524 C.R. 6
Killbuck, Ohio 44637



REC'D
4:02 p.m.
APR 02 '94
Plat.
VOL 14 PAGE 501
Deed vol. 264 pg 293

187454 RECORDED
FEE \$20.00

MAY 03 '94

Sally Miller RECORDER

PLAT APPROVED
4/29/94

INDEXED