

DEC. 17. 1993

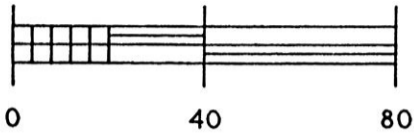
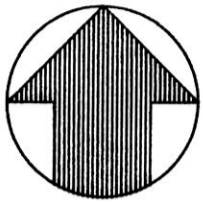
93255

ALLEY VACATION PLAT VILLAGE OF BERLIN

(N.W. QTR. SEC. 15. T-9N. R-5W OF BERLIN TWP.)

HOLMES COUNTY, OHIO

VOL 14 PAGE 445

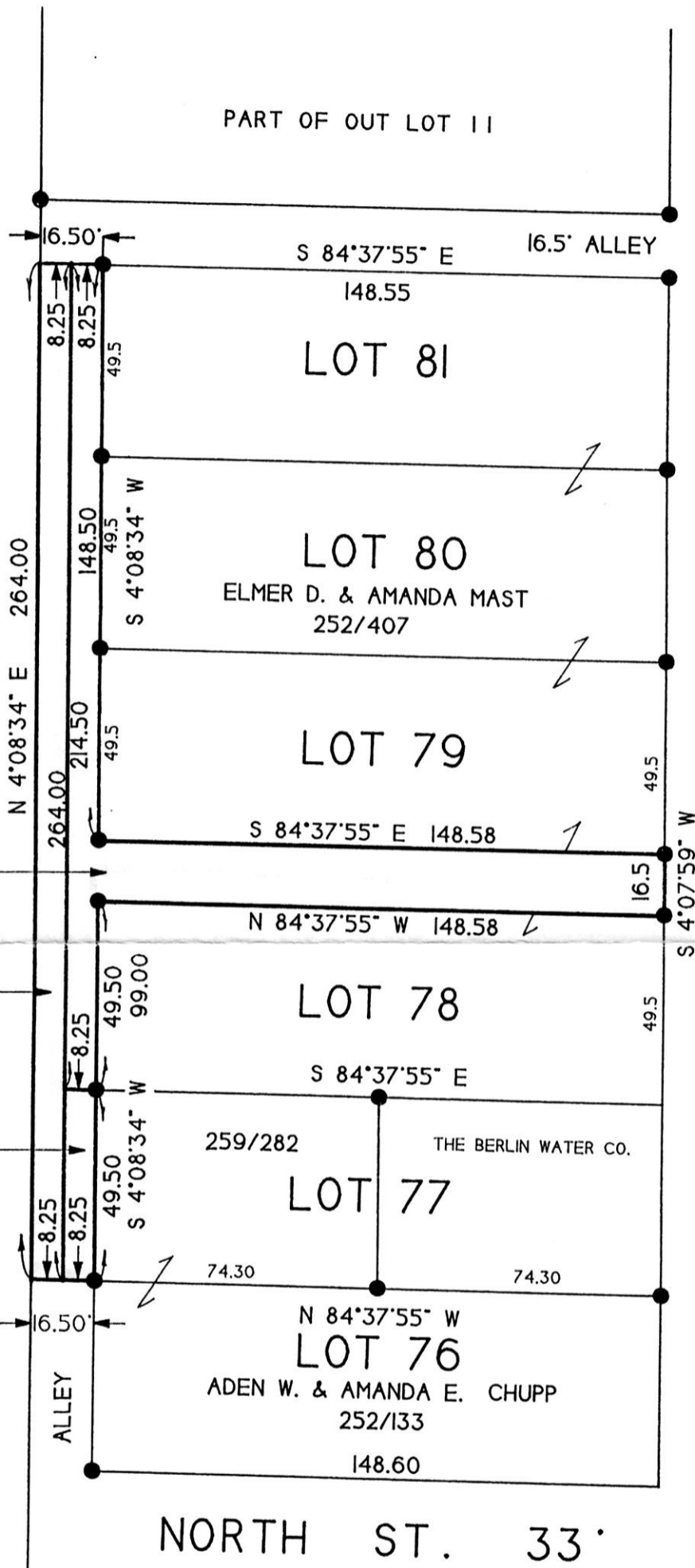


SCALE 1" = 40'

LEGEND

● - IRON CORNER FOUND OR SET BY PRIOR SURVEYS

BEARINGS ARE COMMON WITH PRIOR SURVEYS OF RECORD BY R.W. GASBARRE & ASSOCIATES THAT ARE ON FILE AT THE HOLMES COUNTY MAP OFFICE.



0.097 AC.

0.050 AC.

0.009 AC.

PART OF OUT LOT 11
ADEN W. & AMANDA E. CHUPP
252/133

TOTAL AREA OF
VACATED ALLEYS
0.156 ACRES

186445

REC'D
AT 3:31 o'clock pm

RECORDED
FEE No fee

FEB 24 '94

FEB 25 '94

VOL 14 PAGE 445 Sally Miller RECORDER
Deed vol. 263 pg 551

I BELIEVE THIS PLAT TO BE CORRECT TO THE BEST OF MY KNOWLEDGE.

William Gasbarre 12/17/93
No. 6529 DATE

INDEXED

R.W. GASBARRE & ASSOCIATES, INC.

PROFESSIONAL LAND SURVEYORS

401 SOUTH MARKET ST. P.O. BOX 44 WOOSTER, OHIO 44691 216-264-9499