

PAINT TOWNSHIP  
4TH. QTR., LOTS 28 & 31  
T-10N; R-5W  
HOLMES COUNTY, OHIO



SCALE: 1" = 50'

- IRON PIN FOUND
- 5/8" RE BAR WITH I.D. CAP SET
- I.D. CAP MARKED "BAKER 6938"

REFERENCES:

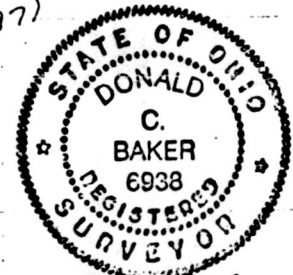
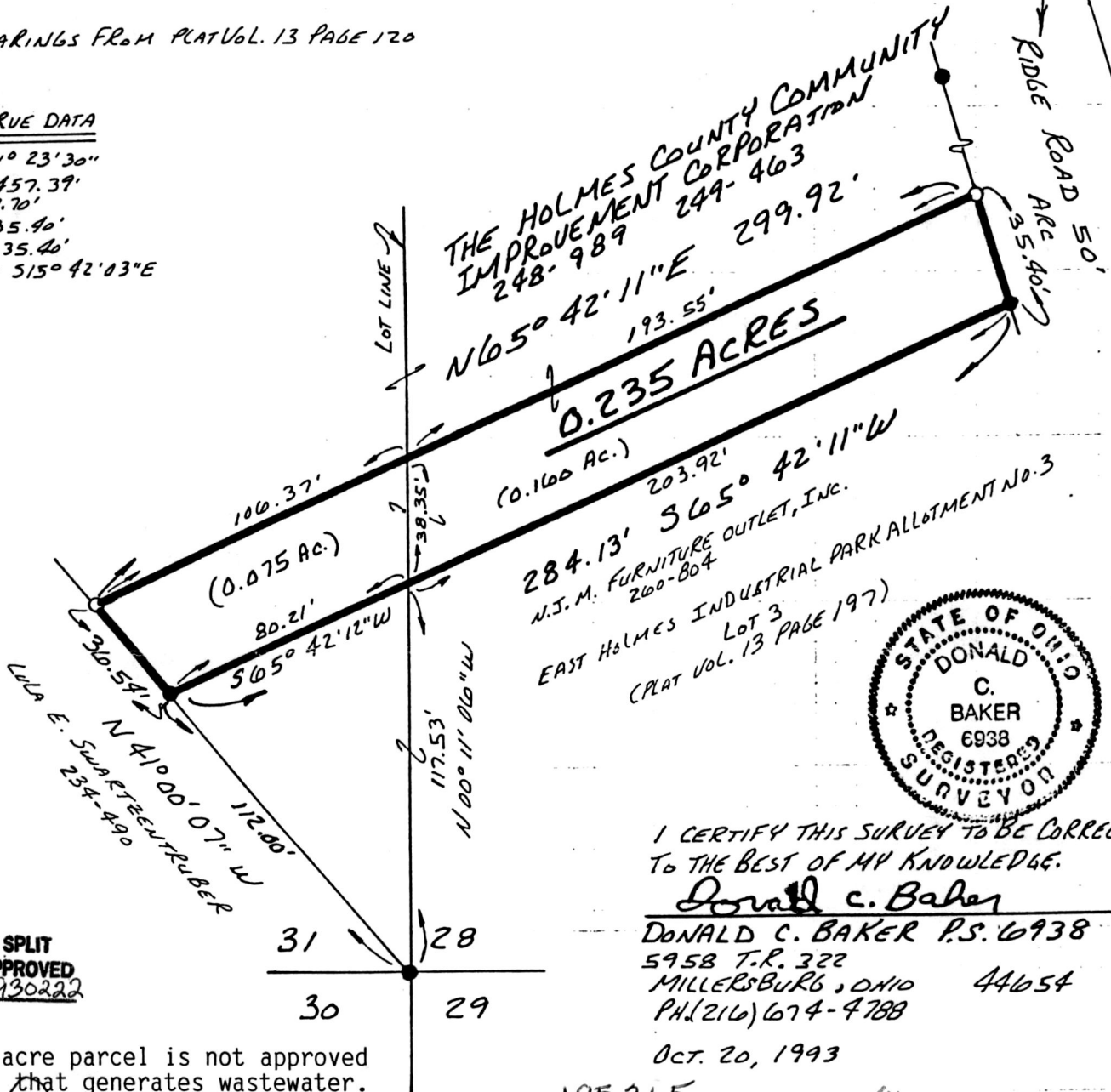
- DEED VOL. 248 PAGE 989
- DEED VOL. 249 PAGE 463
- DEED VOL. 249 PAGE 469
- PLAT VOL. 9 PAGE 133
- PLAT VOL. 10 PAGE 58
- PLAT VOL. 12 PAGE 541
- PLAT VOL. 2 PAGE 224

BEARINGS FROM PLAT VOL. 13 PAGE 120

CURVE DATA

- Δ - 01° 23' 30"
- R - 1457.39'
- T - 17.70'
- CH - 35.40'
- ARC - 35.40'
- BRG. - 515° 42' 03"E

HOLMES COUNTY BOARD  
OF COMMISSIONERS  
248-986



I CERTIFY THIS SURVEY TO BE CORRECT  
TO THE BEST OF MY KNOWLEDGE.

Donald C. Baker  
DONALD C. BAKER P.S. 6938  
5958 T.R. 322  
MILLERSBURG, OHIO 44654  
PH. (216) 674-4788

OCT. 20, 1993

SPLIT  
APPROVED  
#930222

This 0.235 acre parcel is not approved  
for any use that generates wastewater.

[Signature] 12/9/93  
Sanitarian Date

185265  
 Rec'd. DEC 13 1993 AT 4:20 O'CLOCK P.M. INDEXED 56693-93  
 Recorded DEC 14 1993 Holmes Co. Ohio Fee \$20.00 PLAT APPROVED 12/10/93B  
 Plat Vol. 14 Pg. 381 Recorder Jally Miller  
 Deed vol. 262 Pg. 666  
 Laurel.