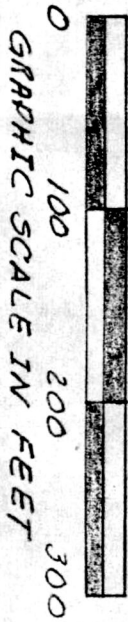
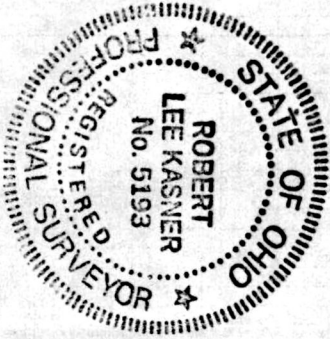
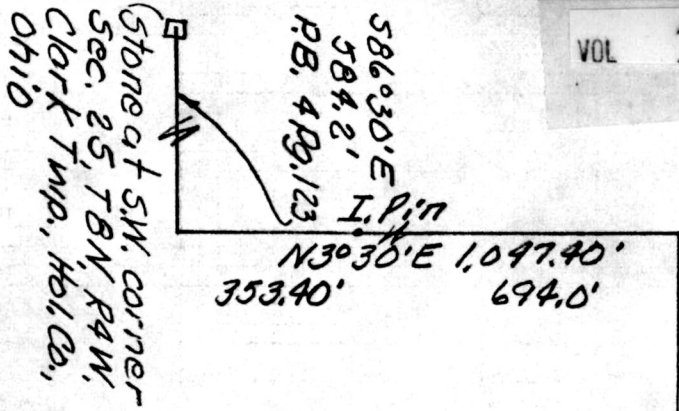


180739



Bathic Minerals
Vol. 204 Pg. 613
P.B. 6 Pg. 4

586°30'E 1,235.5'
The General Clay
Products Co.
Vol. 131 Pg. 482
440.0'

530°30'W 10.0'
0.01 ACRE, part of Vol. 115 Pg. 27

Village of Bathic
Vol. 100 Pg. 331
Approximate
C.R. 575

Based on P.B. 6 Pg. 4

510°04'W 10.09'
Village of
Bathic
Vol. 214 Pg. 620

This .01 acre parcel is not approved
for any use that generates wastewater.

Sanitarian

Date

2/8/93

180739

INDEXED

rec'd. FEB 18 1993
Recorded FEB 19 1993
Deed Vol. 14 Pg. 151

AT 12:16 O'CLOCK P.M.
Holmes Co. Ohio Fee \$5.00

Recorder Kelly Miller
Deputy

KNOWN AS part of the S.W. 1/4
of Sec. 25, T8N, R4W of Clark
Twp., Hol. Co., Ohio being in
the Village of Bathic.

Robert L. Kasner P.S. 5193

P.E. 28820
12/5/92

PLAT APPROVED
2-17-93
[Signature]