

**Buckeye Land Surveying, Inc.**  
 George W. Johnson, 215 South Fifth Street, R. • Coshocton, Ohio 43812 (614) 622-4210  
 Professional Land Surveyor "Service is more than a promise"

Name: CASE FARMS, INC.  
 Part of N.E. & S.E. Quarter of Section 5  
 2nd Quarter T.13 N. R.13 W.  
 Twp: PRAIRIE County: HOLMES  
 Date: Feb., 1992

VOL 14 PAGE 147 of 500

- NOTE:
- Bearings & North Arrow are based on Deed Book 237, page 186, Holmes County Deed Records.
  - All 1/2 inch rebars set are 30 inches long or longer.
  - Pertinent Documents: (D.B. 237, pg. 186), (D.B. 204, pg. 298), (D.B. 151, pg. 371), (D.B. 203, pg. 368), (D.B. 224, pg. 49), (D.B. 232, pg. 126), (D.B. 129, pg. 125), (P.B. 8, pg. 294), (P.B. 10, pg. 267), (P.B. 10, pg. 595), Holmes County Deed and Plat Records.
  - This property is subject to all rights-of-way, easements, and restrictions of record or implied, if any, and are not necessarily shown on this plat.

N.E. Qtr. 0.471 Ac. +/-  
 S.E. Qtr. 0.885 Ac. +/-  
 S.E. Qtr. 1.086 Ac. +/-  
2.442 Ac. +/-

This 2.442 acre parcel is not approved for any use that generates wastewater.

[Signature] Sanitarian Date 2/10/93

**SPLIT APPROVED**

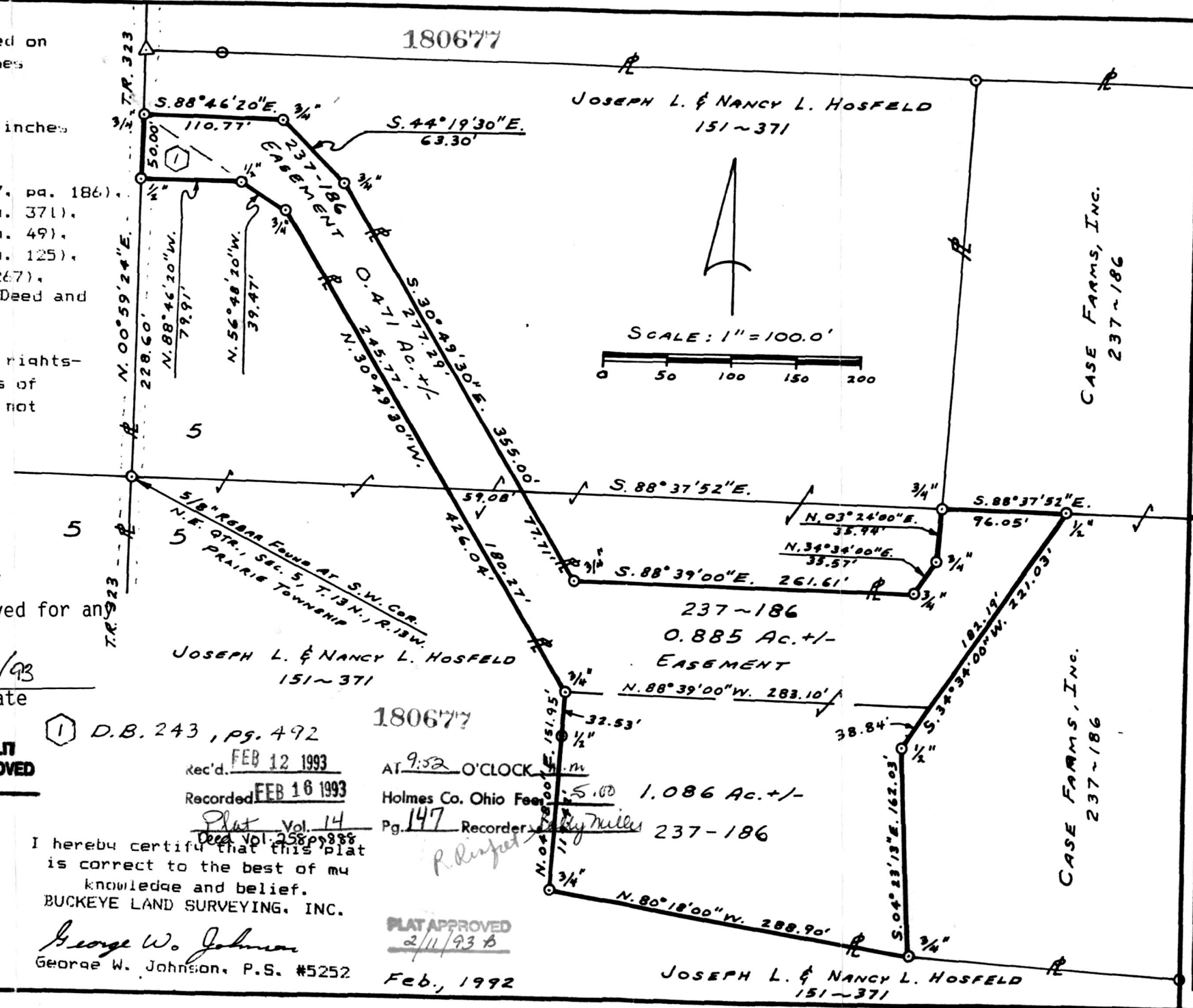
① D.B. 243, pg. 492  
 rec'd. FEB 12 1993  
 Recorded FEB 16 1993  
 Plat Vol. 14  
 Deed Vol. 258 pgs. 88

I hereby certify that this plat is correct to the best of my knowledge and belief.  
 BUCKEYE LAND SURVEYING, INC.

George W. Johnson  
 George W. Johnson, P.S. #5252

180677  
 AT 9:52 O'CLOCK  
 Holmes Co. Ohio Fee 5.00  
 Pg. 147 Recorder [Signature]  
237-186

**PLAT APPROVED**  
2/11/93  
 Feb., 1992



INDEXED

