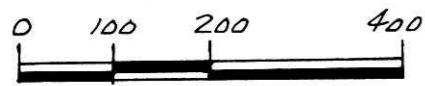


KILLBUCK TOWNSHIP
S.E. & S.W. QTR. SECTION 16
T. 8N; R. 7W
HOLMES COUNTY, OHIO

182181



- SCALE: 1" = 200'
- STONE FOUND
 - R.R. SPIKE FOUND
 - IRON PIN FOUND
 - △ R.R. SPIKE SET
 - 5/8" RE BAR WITH I.D. CAP SET
 - I.D. CAP MARKED "BAKER 6938"

REFERENCES:
 DEED VOL. 244 PAGE 359
 DEED VOL. 249 PAGE 289
 DEED VOL. 169 PAGE 535
 DEED VOL. 170 PAGE 213
 PLAT VOL. 8 PAGE 410
 DEED VOL. 34 PAGE 542

BEARINGS FROM DEED VOL. 255 PAGE 272

CURVE DATA

CURVE "A"	CURVE "B"	CURVE "C"
Δ - 02° 38' 29"	Δ - 05° 30' 50"	Δ - 00° 50' 49"
R - 1959.36'	R - 2914.22'	R - 1959.36'
T - 45.17'	T - 140.33'	T - 14.48'
CH. BRG. - S 14° 16' 47" E	CH. BRG. - N 04° 09' 37" E	CH. BRG. - N 06° 30' 12" E
CH. - 90.32'	CH. - 280.34'	CH. - 28.97'
ARC - 90.33'	ARC - 280.45'	ARC - 28.97'

CURVE "D"	CURVE "E"	CURVE "F"
Δ - 19° 02' 20"	Δ - 05° 24' 03"	Δ - 22° 31' 38"
R - 1959.36'	R - 3013.22'	R - 1860.36'
T - 328.57'	T - 142.13'	T - 370.51'
CH. BRG. - N 03° 26' 22" W	CH. BRG. - N 04° 13' 00" E	CH. BRG. - N 04° 20' 12" W
CH. - 648.08'	CH. - 283.93'	CH. - 726.75'
ARC - 651.08'	ARC - 284.04'	ARC - 731.45'

(A) JOHN SCOTT 205-578 244-359



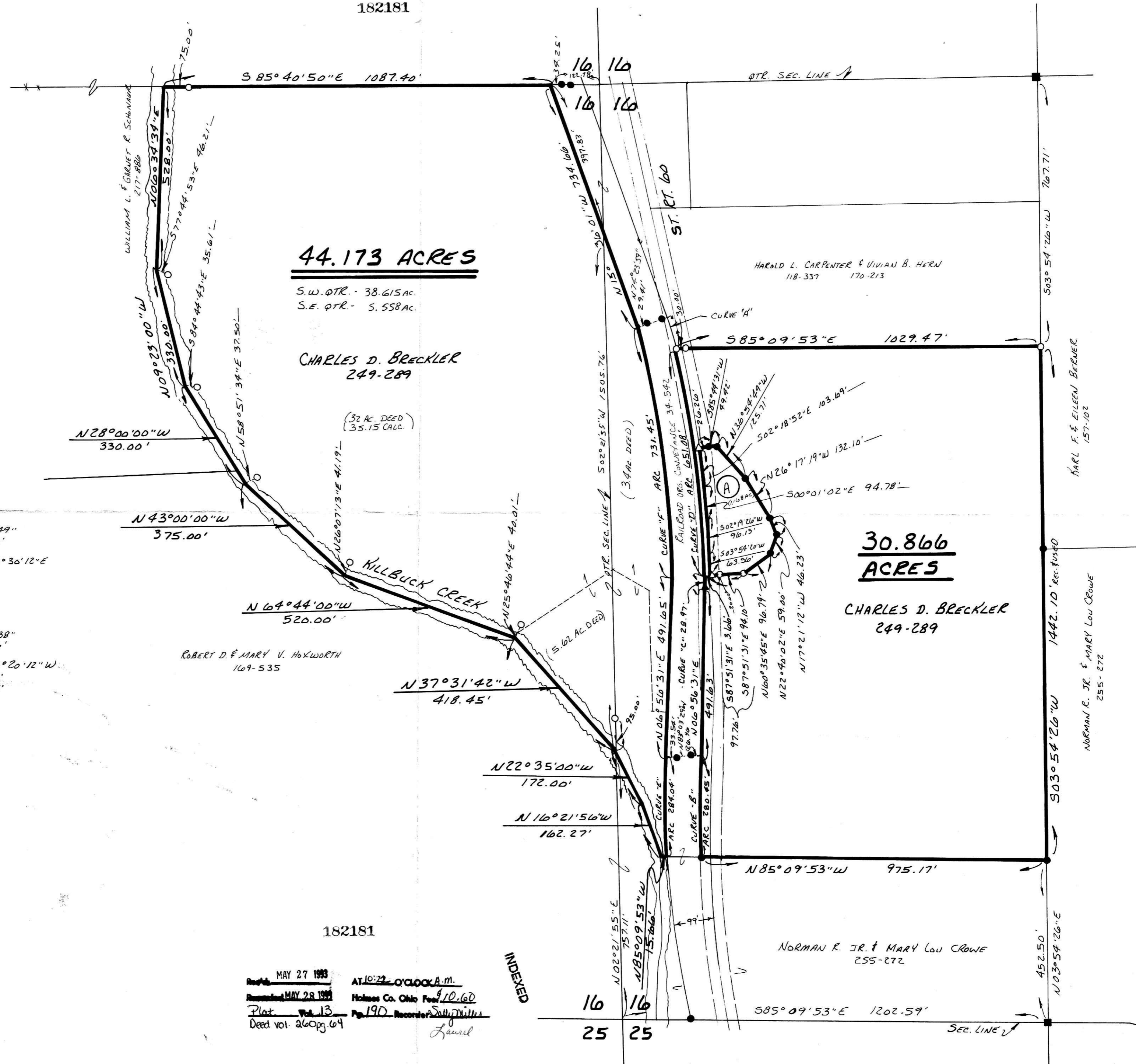
I CERTIFY THIS SURVEY TO BE CORRECT TO THE BEST OF MY KNOWLEDGE.

Donald C. Baker
 DONALD C. BAKER P.S. 6938
 5958 T.R. 322
 MILLERSBURG, OHIO 44654
 PH. (216) 674-4788

MAY 13, 1993

20293-MLS

VOL 13 PAGE 190



182181

RECORDED MAY 27 1993 AT 10:22 O'CLOCK A.M.
 HOLMES CO. OHIO
 Plat Vol. 13 Page 190 Recorder's Office
 Deed vol. 260 pg. 64

INDEXED