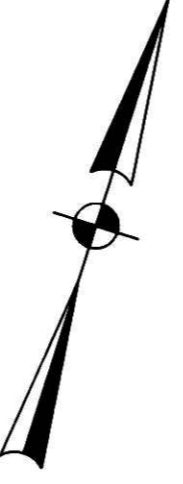
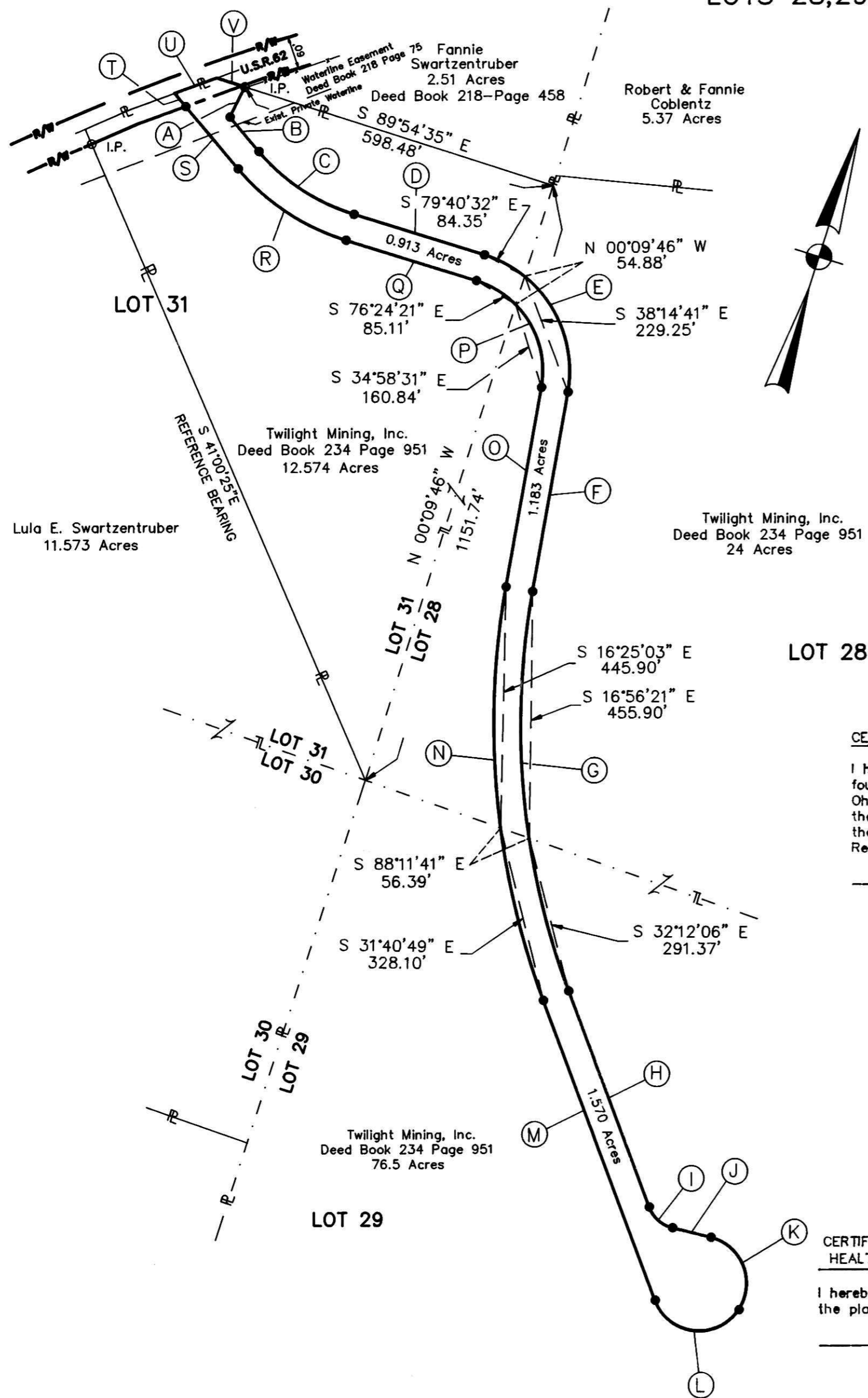


# PLAT OF SURVEY FOR HOLMES COUNTY, OHIO

## PAINT TOWNSHIP

FOURTH QUARTER-TOWNSHIP 10 RANGE 5  
LOTS 28,29,31 - UNITED STATES MILITARY DISTRICT

*10/10/90*



ARC= 325.40' T = 198.58'  
CH= 297.77' Δ = 82°51'41"  
CH BRG= S 49°02'55"E  
R= 225.00'

ARC= 60.20' T = 32.71'  
CH= 57.87' Δ = 55°38'11"  
CH BRG= S 65°57'41"E  
R= 62.00'

ARC= 193.64' T = 173.00'  
CH= 156.87' Δ = 126°04'44"  
CH BRG= S 78°49'02"W  
R= 88.00'

ARC= 242.19' T = 124.48'  
CH= 238.92' Δ = 32°39'01"  
CH BRG= N 74°09'15"W  
R= 425.00'

A	S 09°07'06" W	62.04'
B	S 57°49'45" E	83.23'
C		
D	N 89°31'14" E	252.58'
E		
F	S 07°37'05" E	373.81'
G		
H	S 38°08'36"E	426.67'
I		
J	N 86°13'13"E	73.49'
K		
L		
M	N 38°08'36"W	591.97'
N		
O	N 07°37'05"W	373.81'
P		
Q	S 89°31'14"W	252.58'
R		
S	N 57°49'45"W	150.74'
T	N 57°49'45"W	31.95'
U	N 52°17'37" E	82.92'
V	S 89°54'34" E	55.04'

ARC= 213.70' T = 109.84'  
CH= 210.82' Δ = 32°39'01"  
CH BRG= S 74°09'15" E  
R= 375.00'

ARC= 749.81' T = 384.03'  
CH= 740.97' Δ = 30°31'31"  
CH BRG= S 22°52'50" E  
R= 1407.39'

ARC= 168.27' T = 124.65'  
CH= 143.78' Δ = 109°33'27"  
CH BRG= S 39°00'03"E  
R= 88.00'

ARC= 776.45' T = 397.68'  
CH= 767.30' Δ = 30°31'31"  
CH BRG= N 22°52'50"W  
R= 1457.39'

ARC= 253.09' T = 154.45'  
CH= 231.60' Δ = 82°51'41"  
CH BRG= N 49°02'55" W  
R= 175.00'

**CERTIFICATE OF APPROVAL FOR RECORDING**

I hereby certify that the plat shown hereon has been found to comply with the Regulations for Holmes County, Ohio, with the exception of such variances if any, as are noted in the minutes of the Holmes County Regional Planning Commission and that it has been approved for recording in the office of the County Recorder.

Date \_\_\_\_\_ 19\_\_

Holmes County Regional Planning Commission

**AREA**

0.913 Ac. out of a 12.574 Ac. Parcel  
1.183 Ac. out of a 24 Ac. Parcel  
1.570 Ac. out of a 76.5 Ac. Parcel  
3.666 Acres = TOTAL AREA

0.067 Ac. of the 3.666 Ac. Parcel  
Falls in U.S. Route 62 Right of Way Limits

**CERTIFICATION OF APPROVAL BY THE HOLMES COUNTY HEALTH DEPARTMENT**

I hereby certify that the Holmes County Health Department has approved the plat as shown hereon.

Date OCTOBER 5 1990

Commissioner, Holmes County Health Department

*Robert A. Lint, Jr.*  
ROBERT A. LINT, JR.  
REGISTERED SURVEYOR NO. 7153

APPROVED  
10-10-90

**LEGEND**

- ▬ PROPERTY LINE
- ▬ TRACT LINE
- - - - - LOT LINE
- - - - - EASEMENT AND WATER SUPPLY AGREEMENT LINE
- IRON PIN FOUND
- IRON PIN MONUMENT (TO BE SET)

NOTE: MONUMENTS SHALL BE SET IN ACCORDANCE WITH THE "MINIMUM STANDARDS FOR BOUNDARY SURVEYS IN THE STATE OF OHIO"

Rec'd. OCT 10 1990  
Plat Vol. 13  
Deed Vol. 248 Pg. 386

VOL 13 PAGE 120  
BEARINGS SHOWN HEREON ARE ORIENTED TO THE EASTERLY LINE OF THE 18.123 ACRE EXCEPTION DESCRIBED IN THE DEED RECORDS OF HOLMES COUNTY, BOOK 234 PAGE 953.

SEAL STATE OF OHIO ROBERT A. LINT, JR. REGISTERED SURVEYOR 7153 10-10-90	DATE OCT. 90	HOLMES COUNTY RIGHT OF WAY PARCEL AT EAST HOLMES INDUSTRIAL PARK	DRWG. NO. 8752
	DRWN. BY L.D.C.		SCALE 1"=200'
	CH'KD. BY R.L.	W.E. QUICKSALL & ASSOCIATES CONSULTING ENGINEERS NEW PHILADELPHIA OHIO	SHEET 1/1