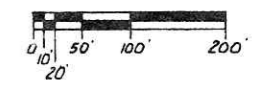


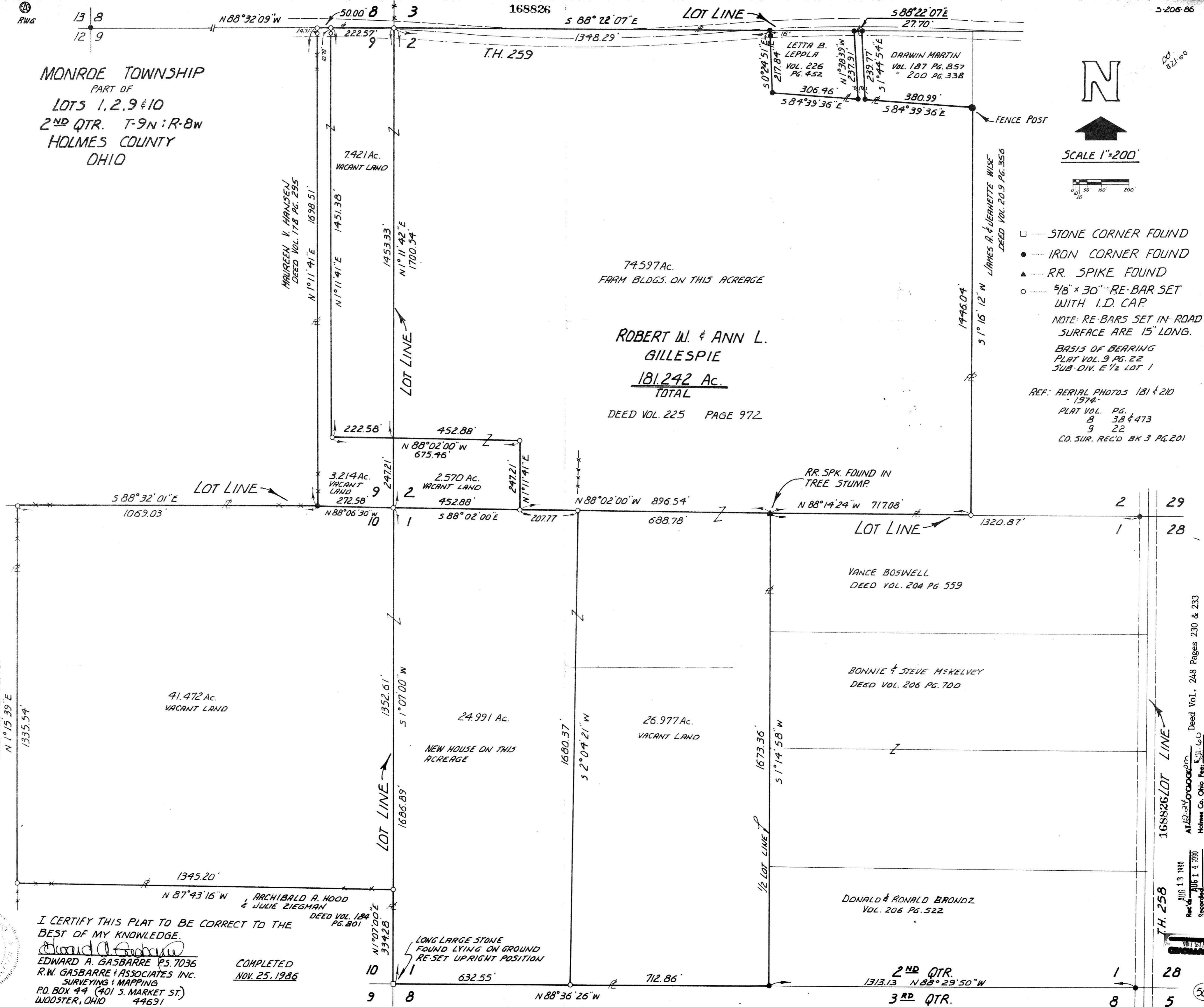
MONROE TOWNSHIP
PART OF
LOTS 1, 2, 9 & 10
2ND QTR. T-9N : R-8W
HOLMES COUNTY
OHIO



SCALE 1"=200'



- STONE CORNER FOUND
 - IRON CORNER FOUND
 - ▲ RR SPIKE FOUND
 - 5/8" x 30" RE-BAR SET WITH I.D. CAP.
- NOTE: RE-BARS SET IN ROAD SURFACE ARE 15" LONG.
- BASIS OF BEARING
PLAT VOL. 9 PG. 22
SUB-DIV. E 1/2 LOT 1
- REF: AERIAL PHOTOS 181 & 210 - 1974
PLAT VOL. PG.
8 38 & 473
9 22
CO. SUR. REC'D BK 3 PG. 201



LOWEN & PATRICIA MARTIN
DEED VOL. 221 PG. 761
N 1° 15' 39" E

I CERTIFY THIS PLAT TO BE CORRECT TO THE
BEST OF MY KNOWLEDGE.

Edward A. Gasbarre
EDWARD A. GASBARRE P.S. 7036
R.W. GASBARRE & ASSOCIATES INC.
SURVEYING & MAPPING
P.O. BOX 44 (401 S. MARKET ST.)
WOODSTER, OHIO 44691

COMPLETED
NOV. 25, 1986

LONG LARGE STONE
FOUND LYING ON GROUND
RE-SET UPRIGHT POSITION



168826 LOT LINE
T.H. 259
AUG 13 1980
RECORDED
AUG 14 1980
Holmes Co. Ohio Rec. 501.60
Pg. 114 - Recorder's Office
Alvin Sweeney