

WASHINGTON TOWNSHIP
S.W. QTR. SECTION 31 - T-20N; R-15W
N.W. QTR. SECTION 6 - T-19N; R-15W
VILLAGE OF LOUDONVILLE
HOLMES COUNTY, OHIO

TRACT I

MOHICAN AREA GROWTH FOUNDATION, INC. DEED VOL. 244 PAGE 692
(VILLAGE OF LOUDONVILLE) 6.881 ACRES
S.W. QTR. SECTION 31

MOHICAN AREA GROWTH FOUNDATION, INC. DEED VOL. 242 PAGE 545
VILLAGE OF LOUDONVILLE - 32.426 ACRES - (2.670 ACRES - SECTION 6)
(29.756 ACRES - SECTION 31)
S.W. QTR. SECTION 31 - 0.953 ACRES
33.379 ACRES

MOHICAN AREA GROWTH FOUNDATION, INC. DEED VOL. 243 PAGE 86
S.W. QTR. SECTION 31 - 0.091 ACRES - VILLAGE OF LOUDONVILLE (5.068 AC. - SEC. 6)
N.W. QTR. SECTION 6 - 0.141 ACRES - 8.679 AC. (3.611 AC. - SEC. 31)
8.911 ACRES

TRACT I - 49.171 TOTAL ACRES

TRACT II

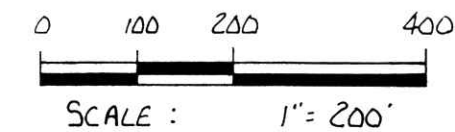
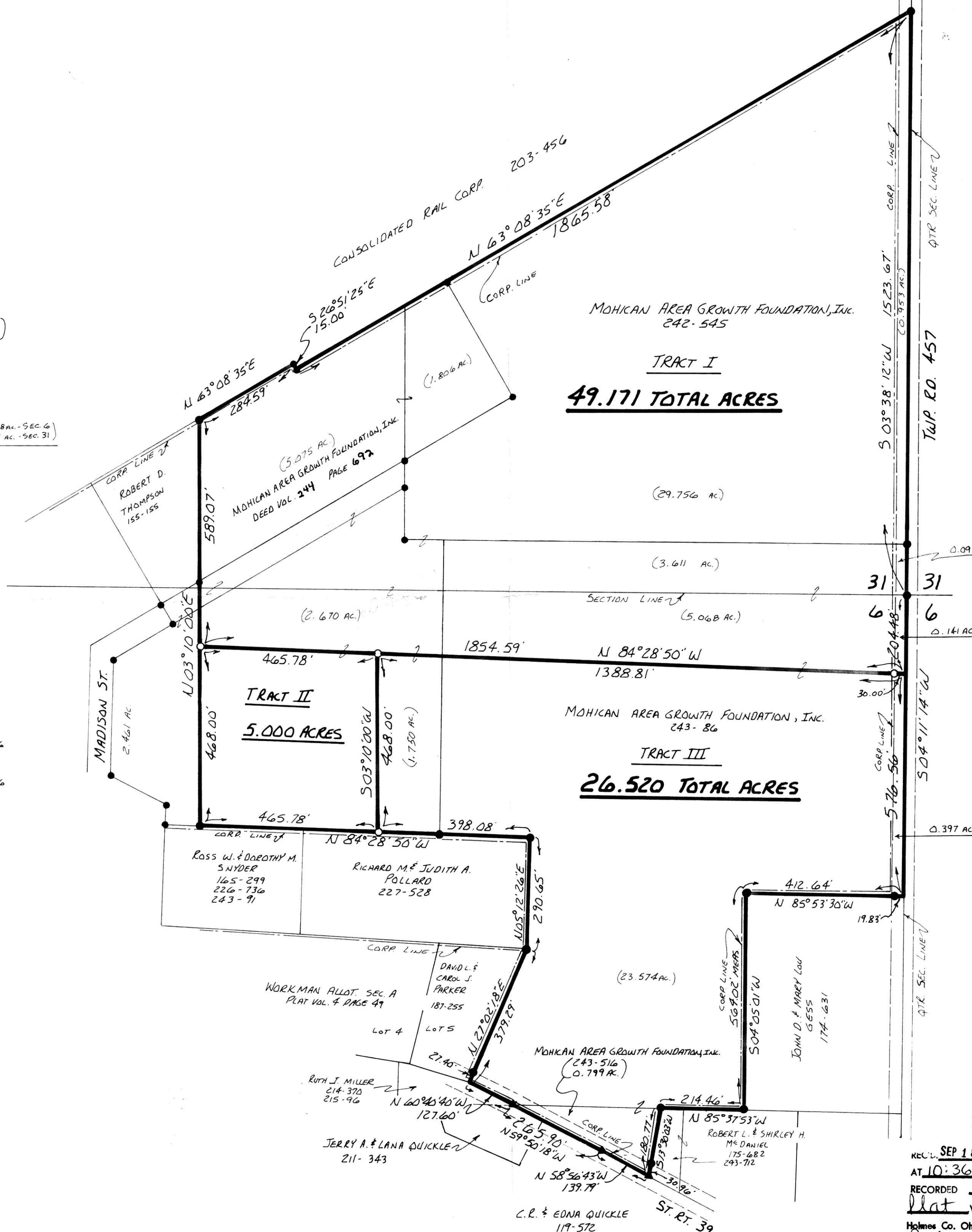
MOHICAN AREA GROWTH FOUNDATION, INC. DEED VOL. 242 PAGE 545
(N.W. QTR. SECTION 6) - 5.000 ACRES
VILLAGE OF LOUDONVILLE
TRACT II - 5.000 TOTAL ACRES

TRACT III

MOHICAN AREA GROWTH FOUNDATION, INC. DEED VOL. 242 PAGE 545
VILLAGE OF LOUDONVILLE (N.W. QTR. SEC. 6) - 1.750 ACRES

MOHICAN AREA GROWTH FOUNDATION, INC. DEED VOL. 243 PAGE 86
N.W. QTR. SECTION 6 - 0.397 ACRES (23.911 AC. - VILLAGE OF LOUDONVILLE (SEC. 6) 23.514 ACRES)
MOHICAN AREA GROWTH FOUNDATION, INC. DEED VOL. 243 PAGE 516
(N.W. QTR. SECTION 6) - 0.799 ACRES
(VILLAGE OF LOUDONVILLE)

TRACT III - 26.520 TOTAL ACRES



- ▲ R.R. SPIKE FOUND
- IRON PIN FOUND
- 5/8" REBAR WITH I.D. CAP SET
I.D. CAP MARKED "BAKER 6938"

REFERENCES

PLAT VOL. 13 PAGE 57
PLAT VOL. 13 PAGE 48
PLAT VOL. 8 PAGE 60
PLAT VOL. 5 PAGE 127
PLAT VOL. 12 PAGE 226
VARIOUS DEEDS AS SHOWN
BEARINGS FROM PLAT VOL. 8
PAGE 60



I CERTIFY THIS SURVEY TO BE CORRECT
TO THE BEST OF MY KNOWLEDGE.

Donald C. Baker
DONALD C. BAKER P.S. 6938
4321 T.R. 252
GLENMONT, OH.

AUG. 29, 1989
Rev. Sept. 18, 1989

165132

REC'D. SEP 18 1989
AT 10:36 O'CLOCK AM
RECORDED SEP 19 1989
PLAT VOL. 13 PG. 79
Holmes Co. Ohio Fee: \$21.60
Richard Graeven Recorder
Forsthoefel