

0 40 80 120

SCALE: 1" = 40'

- IRON PIN FOUND
- HOLE CUT IN LARGE ROCK
- △ P.K. NAIL SET
- 3/8" REBAR WITH 1.0 CAP SET
- 1.0 CAP MARKED "BAKER 6738"

REFERENCES:

SURVEY REQUIRED & PAGE 112
 PLAT VOL. 4 PAGE 89
 PLAT VOL. 1 PAGES 383-384
 PLAT VOL. 1 PAGES 389-390
 PLAT VOL. 2 PAGE 209
 PLAT VOL. 2 PAGE 98
 BEARINGS FROM PLAT VOL. 2
 PAGE 3
 VARIOUS DEEDS AS SHOWN

WASHINGTON TOWNSHIP
 S.W. QTR. SECTION 25
 T-20 N R-15 W
 HOLMES COUNTY, OHIO

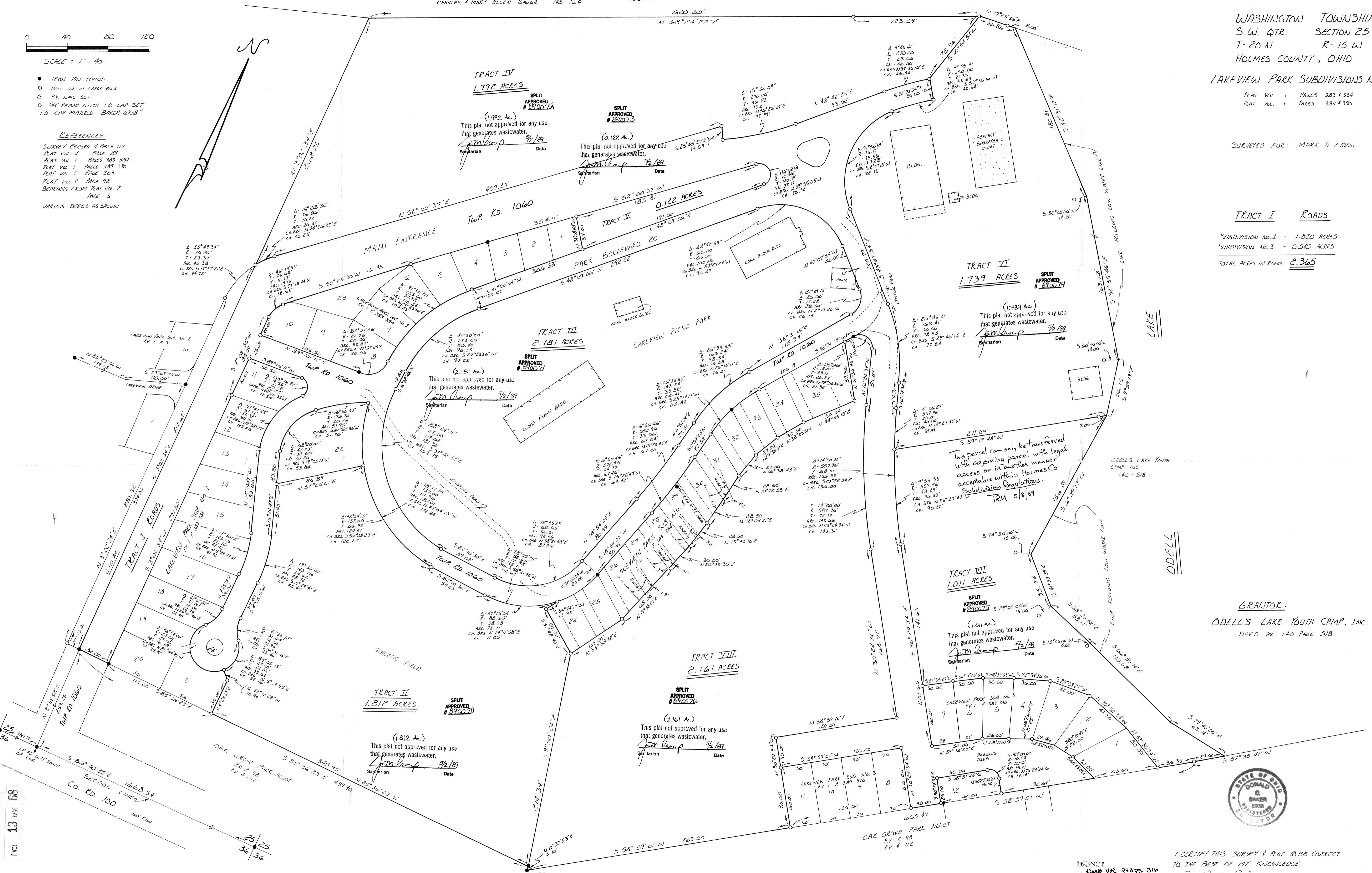
LAKEVIEW PARK SUBDIVISIONS No. 1 & No. 3

PLAT VOL. 1 PAGES 383 & 384
 PLAT VOL. 1 PAGES 389 & 390

SURVEYED FOR: MARK D. EATON

TRACT I ROADS

SUBDIVISION No. 1 - 1.820 ACRES
 SUBDIVISION No. 3 - 0.545 ACRES
 TOTAL ACRES IN ROADS 2.365



GRANTOR:
 ODELL'S LAKE YOUTH CAMP, INC.
 DEED VOL. 140 PAGE 518



I CERTIFY THIS SURVEY & PLAT TO BE CORRECT
 TO THE BEST OF MY KNOWLEDGE.
 Donald C. Baker
 DONALD C. BAKER P.S. 6938
 4321 TR. 252
 GLENMOUNT, OH
 Dec. 10, 1988

REC'D. MAY 18 1989
 AT 10:56 O'CLOCK AM
 RECORDED MAY 19 1989
 VOL. 13 PG. 68
 Holmes Co. Ohio Fee: 43.20
 Richard Graeven Recorder