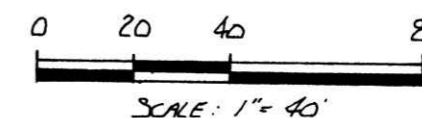
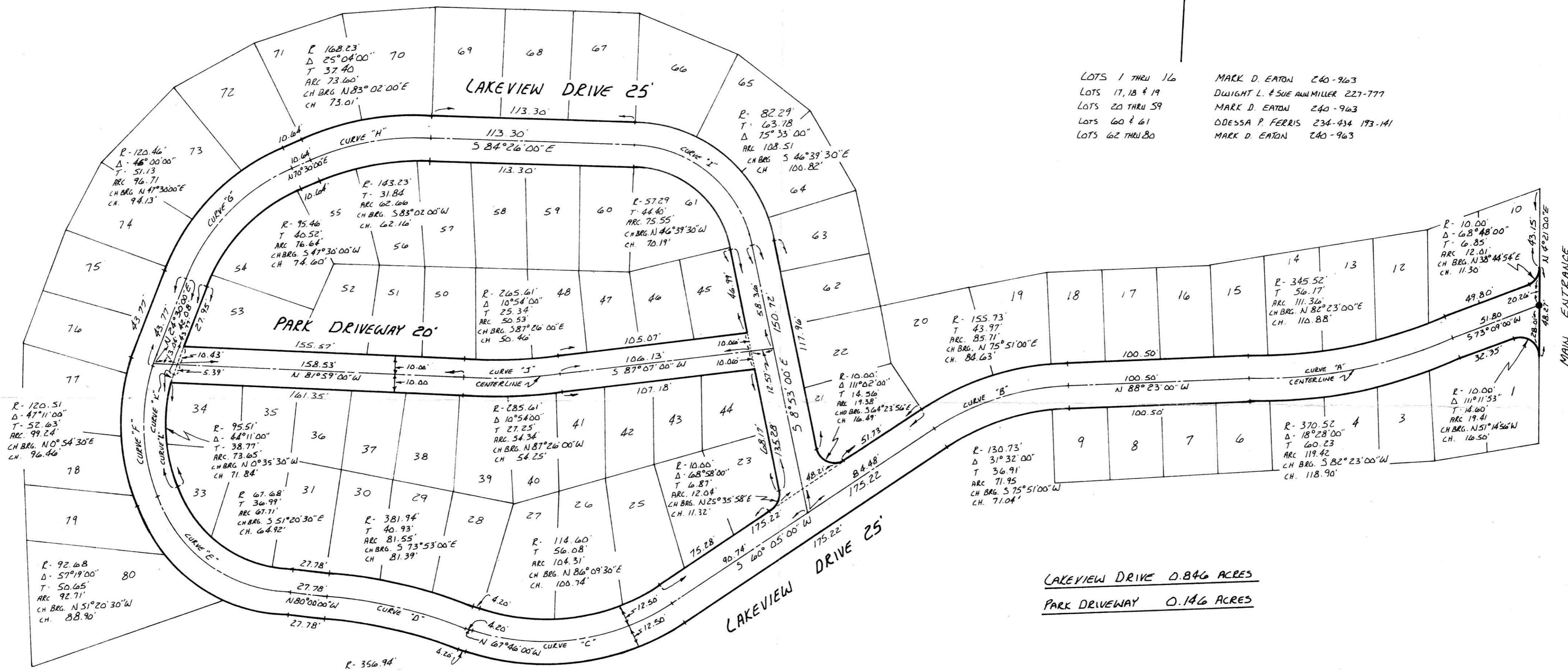


REPLAT OF DRIVES  
IN  
LAKEVIEW PARK SUBDIVISION No. 2

WASHINGTON TOWNSHIP  
S.W. QTR. SECTION 05  
T-20 N R-15 W  
HOLMES COUNTY, OHIO



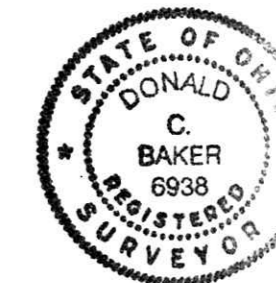
LOTS 1 THRU 16 MARK D. EATON 240-963  
LOTS 17, 18 & 19 DWIGHT L. & SUE ANN MILLER 227-777  
LOTS 20 THRU 59 MARK D. EATON 240-963  
LOTS 60 & 61 DESSA P. FERRIS 234-434 173-141  
LOTS 62 THRU 80 MARK D. EATON 240-963



LAKEVIEW DRIVE 0.846 ACRES  
PARK DRIVEWAY 0.146 ACRES

CURVE DATA

CURVE "A"	CURVE "B"	CURVE "C"	CURVE "D"	CURVE "E"	CURVE "F"
R 358.02' Δ 18°28'00" T 58.20' ARC 115.39' CH BRG. S 82°23'00"W CH 114.89'	R 143.23' Δ 31°32'00" T 40.44' ARC 78.83' CH BRG. S 75°51'00"W CH 77.84'	R 127.10' Δ 52°09'00" T 62.20' ARC 115.69' CH BRG. S 86°09'30"W CH 111.73'	R 369.44' Δ 12°14'00" T 39.59' ARC 78.88' CH BRG. N 73°53'00"W CH 78.73'	R 80.18' Δ 57°19'00" T 43.82' ARC 80.21' CH BRG. N 51°20'30"W CH 76.91'	R 95.51' Δ 47°11'00" T 41.71' ARC 78.65' CH BRG. S 0°54'30"W CH 76.45'
CURVE "G"	CURVE "H"	CURVE "I"	CURVE "J"	CURVE "K"	
R 107.96' Δ 46°00'00" T 45.83' ARC 86.68' CH BRG. N 47°30'00"E CH 84.37'	R 155.73' Δ 25°04'00" T 34.62' ARC 68.13' CH BRG. N 83°02'00"E CH 67.59'	R 69.79' Δ 75°33'00" T 54.09' ARC 92.03' CH BRG. S 46°39'30"E CH 85.50'	R 275.61' Δ 10°54'00" T 26.30' ARC 52.43' CH BRG. N 87°26'00"W CH 52.35'	R 95.51' Δ 2°59'58" T 2.50' ARC 5.00' CH BRG. N 23°00'21"E CH 5.00'	



NOTE: THIS PLAT IS NOT THE RESULTS OF A FIELD SURVEY!  
THIS PLAT OF LAKEVIEW DRIVE & PARK DRIVEWAY  
WAS CALCULATED FROM ORIGINAL PLAT OF LAKEVIEW  
PARK SUBDIVISION No. 2 AND IS RECORDED IN PLAT  
VOL. 2 PAGE 3 AND FROM PLAT VOL. 10 PAGE 429.

I CERTIFY THIS PLAT TO BE CORRECT TO THE BEST OF MY KNOWLEDGE.

Donald C. Baker

DONALD C. BAKER 163561 P.S. 6938  
4321 TR 252  
GLENMOUNT, OH.

Rec'd. APR 25 1988 AT 3:59 O'CLOCK PM  
Recorded APR 28 1988 Holmes Co. Ohio Fees

Plat Vol. 13 Pg. 64 Recorder Richard Craven

Z-4/31  
VOL 13 PAGE 64