

(0.490 Ac.)

This plat not approved for any use that generates wastewater.

Dennis H. Murray 12/6/88
Sanitarian Date

SPLIT APPROVED #880197

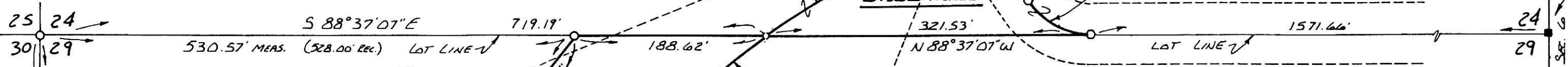
ALAN B. BIGLER
MARY E. HOPKINS
231-771

R- 716.20'
Δ- 12° 13' 56"
T- 77.17'
ARC 153.74'
CH BRG. N 61° 02' 55" E
CH. 153.14'

R- 75.56'
Δ- 55° 47' 37"
T- 40.00'
ARC 73.58'
CH BRG. S 60° 43' 18" E
CH. 70.70'

STONE FO. 1' WEST OF POST
I.P. FO. S.E. 1.00'

Co. Rd. 203 60' R/W



THOMAS W. JR. & ALICE LEA
216-210

0.490 ACRES

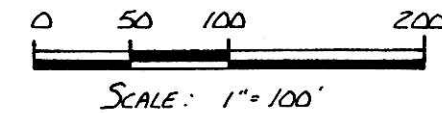
(0.388 Ac.)

This plat not approved for any use that generates wastewater.

Dennis H. Murray 12/6/88
Sanitarian Date

SPLIT APPROVED #880198

HARDY TOWNSHIP 1ST QTR.
LOTS 24 & 29 T-9N; R-7W
HOLMES COUNTY, OHIO



- STONE WITH "X" FOUND
- △ R.R. SPIKE SET
- ⊙ P.K. NAIL SET
- 5/8" REBAR SET
- 5/8" REBAR WITH I.D. CAP SET
- I.D. CAP MARKED "BAKER 6938"

REFERENCES:

SURVEY RECORD 5 PAGE 118
STATE HIGHWAY PLANS
VARIOUS DEEDS AS SHOWN
BEARINGS FROM DEED VOL. 216
PAGE 210



JOHN A. & FANNY MILLER
DEED VOL. 128 PAGE 31

(1.106 Ac.)

This plat not approved for any use that generates wastewater.

Dennis H. Murray 12/6/88
Sanitarian Date

I CERTIFY THIS SURVEY TO BE CORRECT TO THE BEST OF MY KNOWLEDGE.

Donald C. Baker
DONALD C. BAKER P.S. 6938
4321 TR 252
GLENMONT, OH.

NOV. 18, 1988

162205

REC'D. DEC 23 1988
AT 11:10 O'CLOCK A.M.
RECORDED DEC 27 1988
Vol. 13 p. 38
Holmes Co. Ohio Fee: 9.35
Recorder Richard J. ...

Deed Vol. 241 Page 668 & 670

162205

VOL. 13 PAGE 38