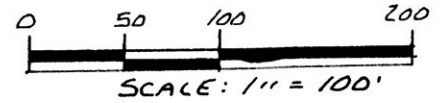


# VILLAGE OF WALNUT CREEK

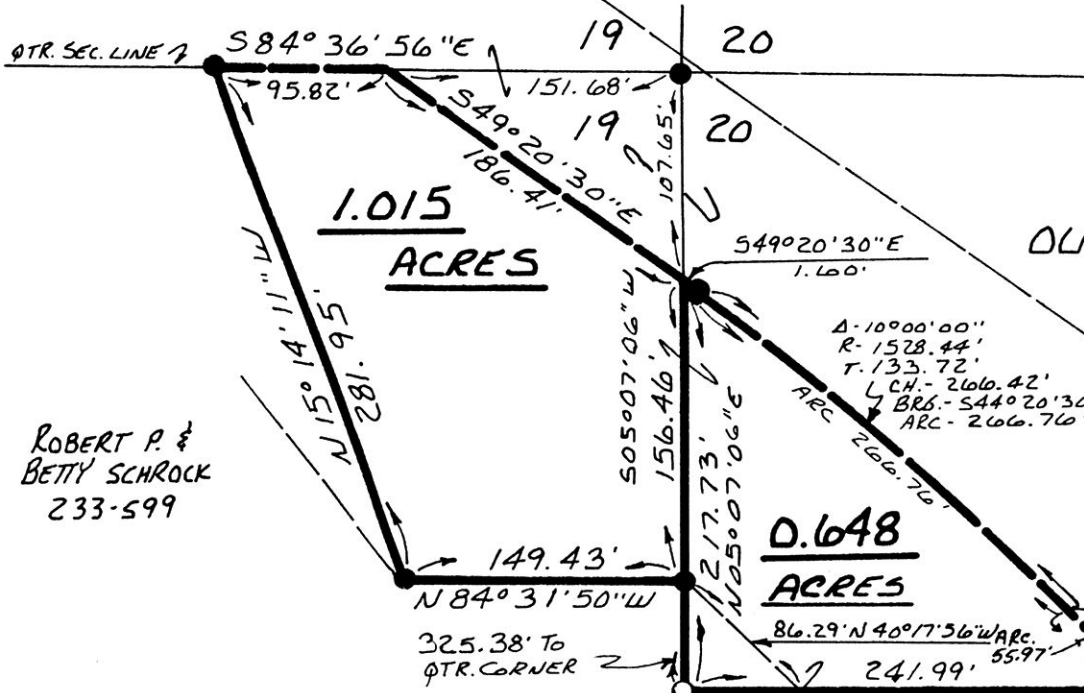
PART OF OUTLOTS 11, 12 & 21

WALNUT CREEK TOWNSHIP  
S.E. QTR. SEC. 19, S.W. QTR. SEC. 20  
T-9N; R-5W, HOLMES CO., OHIO



- HIGHWAY MONUMENT FOUND
- IRON PIN FOUND
- 5/8" RE BAR WITH I.D. CAP SET I.D. CAP MARKED "BAKER 6938"

OUT LOT 21



**1.015**  
**ACRES**

ROBERT P. & BETTY SCHROCK  
233-599

OUT LOT 11

CORA HARRISBERGER TRUST  
250-652

**0.648**  
**ACRES**

Δ - 02° 47' 54"  
R - 1145.92'  
T - 27.99'  
ARC - 55.97'  
CH - 537° 56' 33" E  
CH - 55.96'

### REFERENCES:

- |              |          |
|--------------|----------|
| PLAT VOL. 10 | PAGE 129 |
| 5            | 24       |
| 10           | 665      |
| 13           | 52       |
| 7            | 714      |
- DEED VOL. 250 PAGE 652  
DEED VOL. 236 PAGE 182  
DEED VOL. 233 PAGE 599  
DEED VOL. 1 PAGE 213  
BEARINGS FROM STATE HIGHWAY PLANS

CORA HARRISBERGER  
218-244  
236-182

**2.688 ACRES**

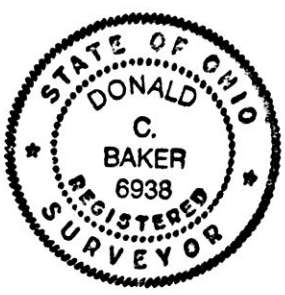
OUT LOT 12

SECTION LINE 7  
675.84' TO QTR. CORNER  
350.46'  
456.83'

**4.786 ACRES**

MARK B. COBLENTZ  
220-271

177352



I CERTIFY THIS SURVEY TO BE CORRECT TO THE BEST OF MY KNOWLEDGE.  
Donald C. Baker  
DONALD C. BAKER P.S. 6938  
4321 T.R. 252  
GLENMONT, OHIO 44628  
AUGUST 5, 1991

Rec'd. JUN 12 1992 AT 3:49 O'CLOCK PM  
Recorded JUN 15 1992 Holmes Co. Ohio Fee 9.35  
Plat Vol. 12 Pg. 954 Recorder Mary Ellen Signst  
Deed vol 255 pg 892 lauril

INDEXED  
PLAT APPROVED  
6/12/92B