

IRON PINS FROM PLAT VOL. 11 PAGE 66

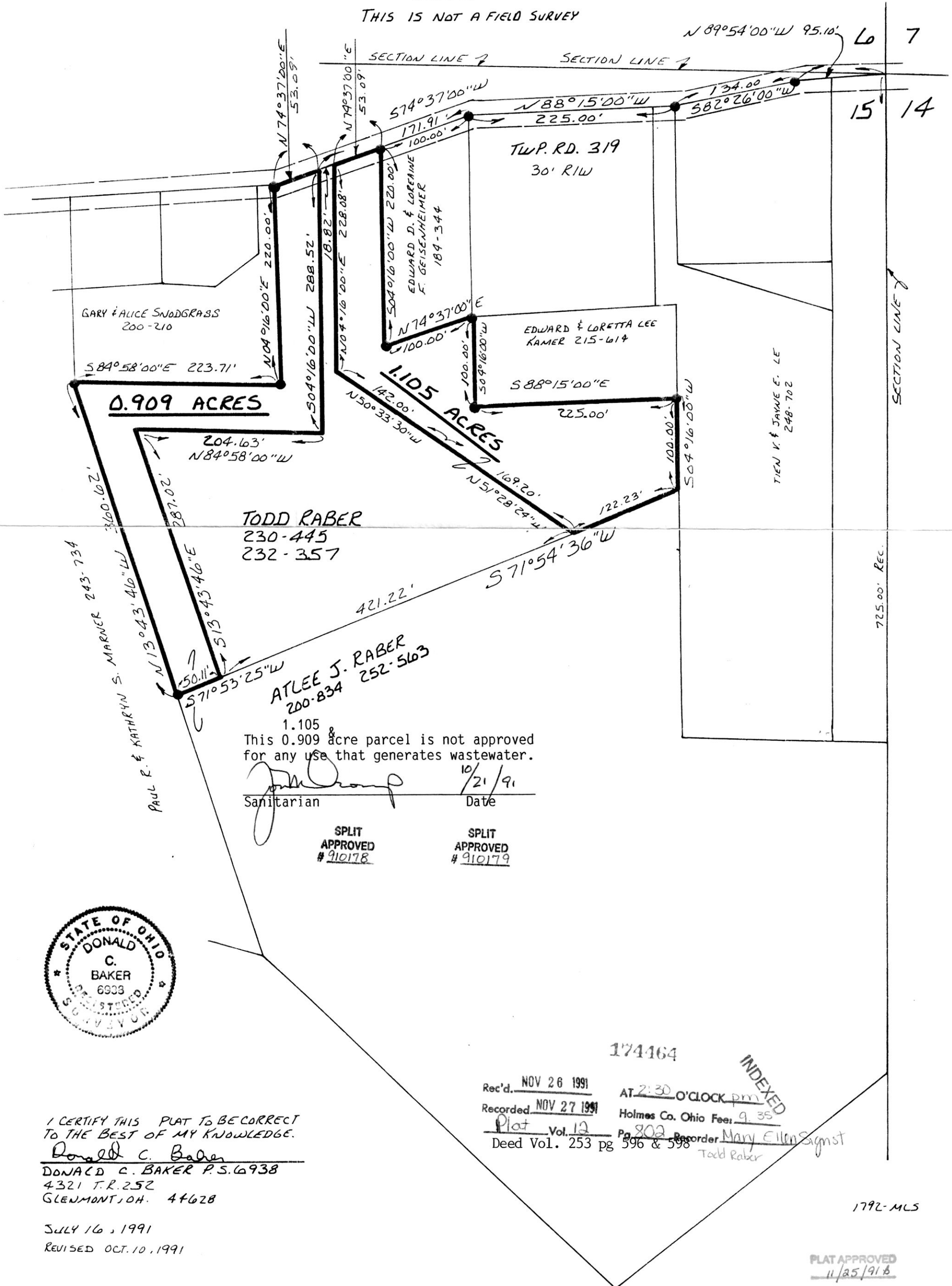
THIS PLAT PREPARED FROM THE FOLLOWING PLATS & DEEDS.

HARDY TOWNSHIP N.E. QTR. FRAC. SEC. 15 T-9N; R-6W HOLMES COUNTY, OHIO

- PLAT VOL. 11 PAGE 66
- PLAT VOL. 8 PAGES 89 & 138
- DEED VOL. 200 PAGE 834
- DEED VOL. 232 PAGE 357
- DEED VOL. 215 PAGE 614
- DEED VOL. 200 PAGE 210
- DEED VOL. 248 PAGE 702

NOTE:

THIS IS NOT A FIELD SURVEY



TODD RABER  
230-445  
232-357

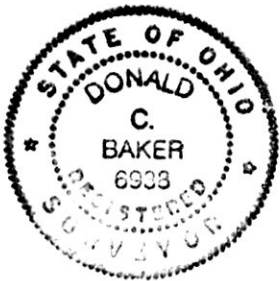
ATLEE J. RABER  
200-834 252-563

1.105  
This 0.909 acre parcel is not approved for any use that generates wastewater.

*[Signature]* 10/21/91  
Sanitarian Date

SPLIT APPROVED # 910178

SPLIT APPROVED # 910179



I CERTIFY THIS PLAT TO BE CORRECT TO THE BEST OF MY KNOWLEDGE.

Donald C. Baker  
DONALD C. BAKER P.S. 6938  
4321 T.R. 252  
GLENMONT, OH. 44628

JULY 16, 1991  
REVISED OCT. 10, 1991

174464

Rec'd. NOV 26 1991

Recorded NOV 27 1991

Plat Vol. 12 Deed Vol. 253 pg 596 & 598

AT 2:30 O'CLOCK pm

Holmes Co. Ohio Fee: 9.35

Recorder Mary Ellen Signst  
Todd Raber

INDEXED

1792-MLS

PLAT APPROVED 11/25/91