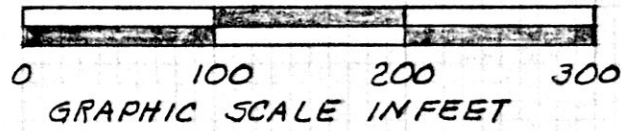
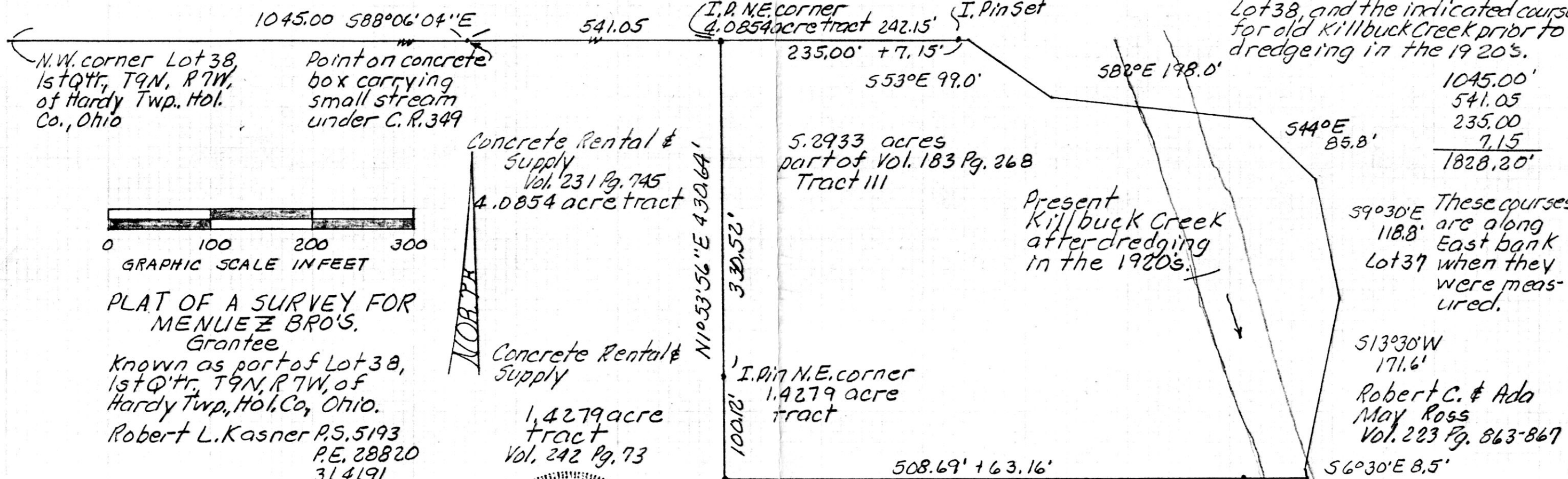
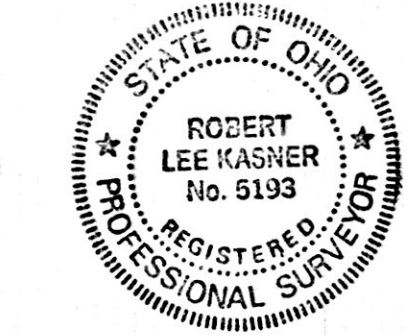


Lot 33 Holmes Co. Commissioners Vol. 53 Pg. 201

S.R. 6 Pg. 18 gives 27.7 chains 1828.20' for North Line of Lot 38, and the indicated courses for old Killbuck Creek prior to dredging in the 1920's.



PLAT OF A SURVEY FOR
 MENLIEZ BRO'S.
 Grantee
 Known as part of Lot 38,
 1st Qtr, T9N, R7W, of
 Hardy Twp., Hol. Co., Ohio.
 Robert L. Kasner P.S. 5193
 P.E. 28820
 314191



172041
 VOL 12 PAGE 654

172041
 MAY 10 1991
 Rec'd. AT 4:13 O'CLOCK pm INDEXED
 Recorded MAY 13 1991 Holmes Co. Ohio Fee: \$5.00
 Plat Vol. 12 Pg. 654 Recorder Mary Ellen Siquist
 5/10/91 B