

170208

RIPLEY TOWNSHIP
HOLMES COUNTY, OHIO
S.W. QTR., SEC. 30, T-18N, R-14W

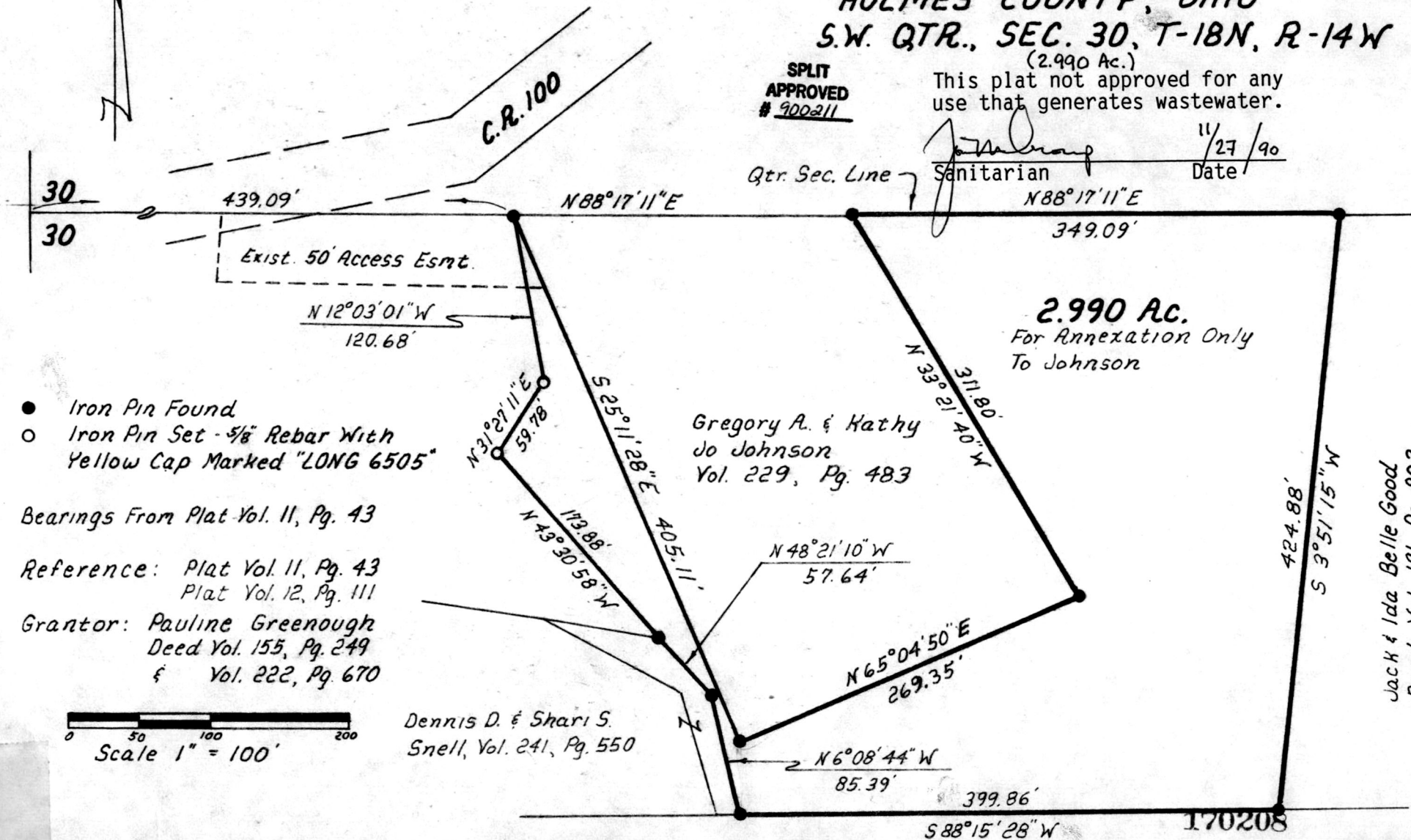
pg 5.00

SPLIT
APPROVED
900211

(2.990 Ac.)
This plat not approved for any
use that generates wastewater.

[Signature]
Sanitarian Date 11/27/90

Qtr. Sec. Line



2.990 Ac.
For Annexation Only
To Johnson

Gregory A. & Kathy
Jo Johnson
Vol. 229, Pg. 483

Jack & Ida Belle Good
Deed Vol. 191, Pg. 802

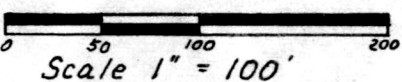
Dennis D. & Shari S.
Snell, Vol. 241, Pg. 550

- Iron Pin Found
- Iron Pin Set - 5/8" Rebar With Yellow Cap Marked "LONG 6505"

Bearings From Plat Vol. 11, Pg. 43

Reference: Plat Vol. 11, Pg. 43
Plat Vol. 12, Pg. 111

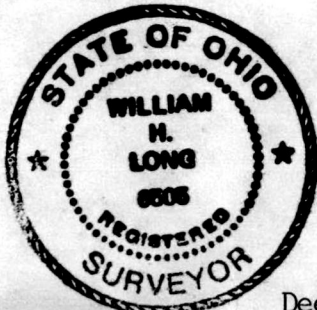
Grantor: Pauline Greenough
Deed Vol. 155, Pg. 249
& Vol. 222, Pg. 670



VOL 12 PAGE 572

I Certify This Survey To Be Correct
To The Best Of My Knowledge.

William H. Long May 8, 1989
William H. Long P.S. 6505
Long Surveying Inc.
13301 T.R. 503
Big Prairie, Ohio 44611



Kathryn A. Longbrake
Deed Vol. 186, Pg. 835
& Vol. 222, Pg. 605

REC'D DEC 03 1990
Recorded DEC 04 1990
Plat Vol 12

AT 1:33 O'CLOCK PM
Holmes Co. Ohio Fee \$5.00
572 Recorder Richard G. ...
John S.

PLAT APPROVED
11/29/90 B

Deed Vol. 249 Pg. 626