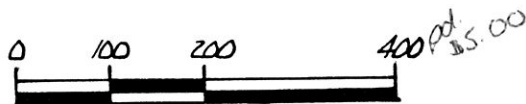


BERLIN TOWNSHIP
1ST. QTR. LOT 17
TWP. 9N RANGE 6W
HOLMES COUNTY, OHIO

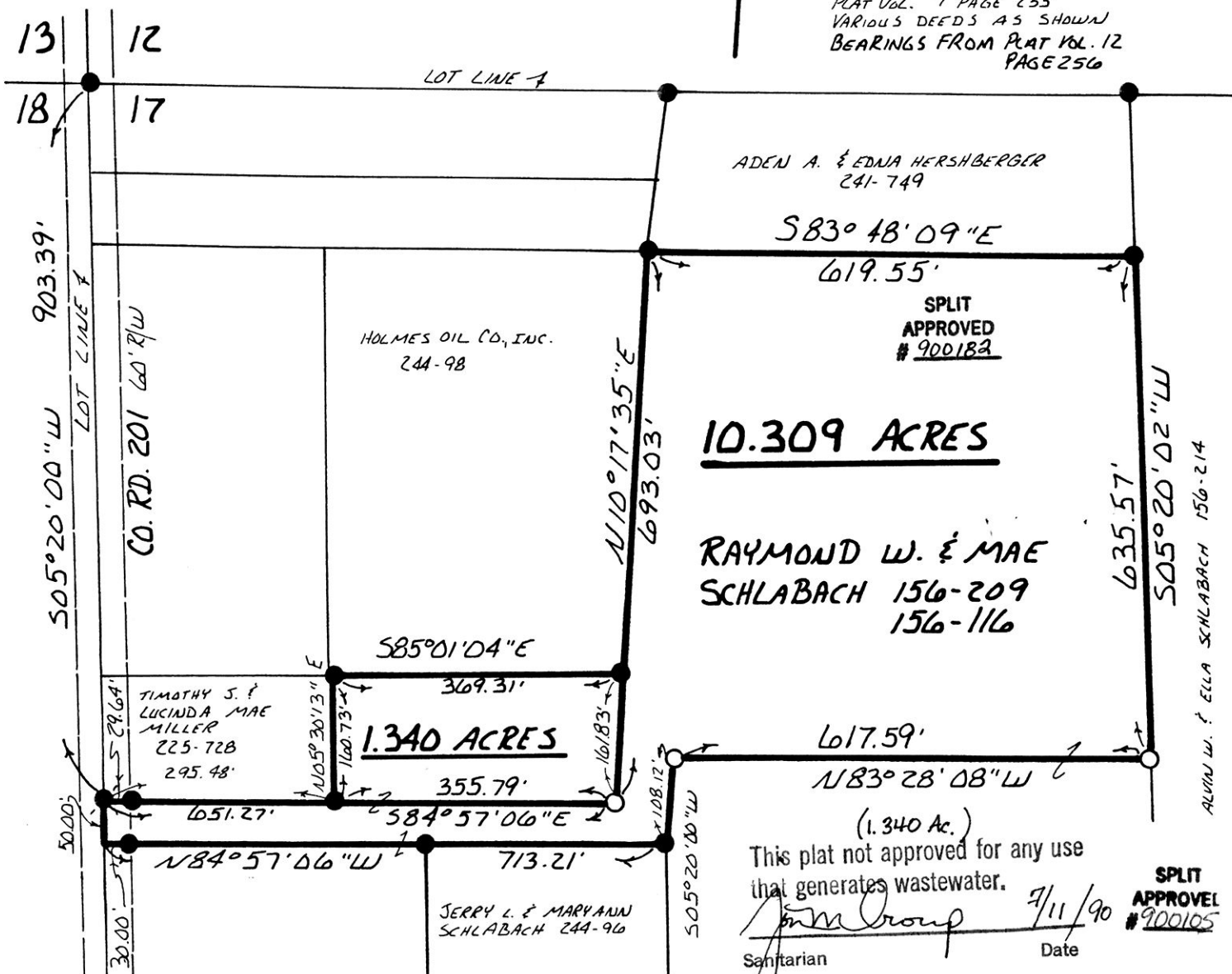


SCALE: 1" = 200'

- P.K. NAIL FOUND
- IRON PIN FOUND
- 5/8" REBAR WITH I.D. CAP SET
- I.D. CAP MARKED "BAKER 6938"

REFERENCES:

PLAT VOL. 13 PAGE 43
 PLAT VOL. 12 PAGE 257
 PLAT VOL. 7 PAGE 546
 PLAT VOL. 12 PAGE 256
 PLAT VOL. 7 PAGE 235
 VARIOUS DEEDS AS SHOWN
 BEARINGS FROM PLAT VOL. 12
 PAGE 256



10.309 ACRES

RAYMOND W. & MAE
SCHLABACH 156-209
156-116

HOLMES OIL CO., INC.
244-98

TIMOTHY S. &
LUCINDA MAE
MILLER
225-728
295-48'

1.340 ACRES

JERRY L. & MARYANN
SCHLABACH 244-96

(1.340 Ac.)
This plat not approved for any use
that generates wastewater.

[Signature] 7/11/90
 Sanitarian Date
SPLIT APPROVAL #900105

CERTIFY THIS SURVEY TO BE CORRECT
TO THE BEST OF MY KNOWLEDGE.

Donald C. Baker
 DONALD C. BAKER P.S. 6938
 4321 T.R. 252
 GLENMONT, OHIO



169494

OCT 03 1990

AT 10:54 O'CLOCK AM
 RECORDED OCT 04 1990
 Plat VOL. 12 PG. 535
 Holmes Co. Ohio Fee: \$5.00

116B-MS Recorder
Richard Craven
 & B Sam

MAY 23, 1990