

SPLIT APPROVED # 900175 900176

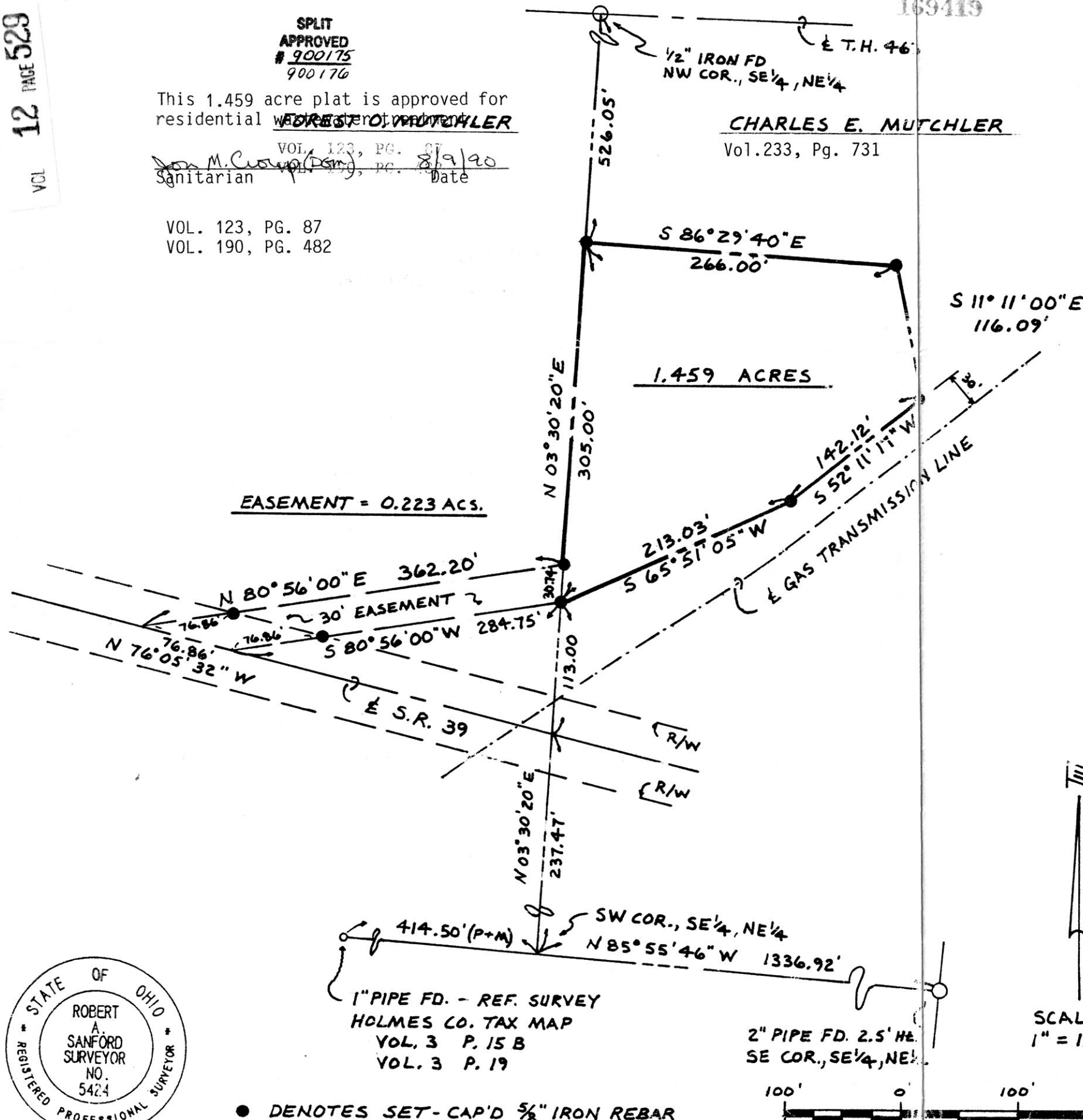
This 1.459 acre plat is approved for residential use by CHARLES E. MUTCHLER

Don M. Crowl (Dsm) Sanitarian VOL. 123, PG. 87 Date 8/9/90

VOL. 123, PG. 87
VOL. 190, PG. 482

CHARLES E. MUTCHLER
Vol. 233, Pg. 731

REPORT OF SURVEY FOR
THE VILLAGE OF LOUDONVILLE
PT. SE 1/4, NE 1/4, SEC. 6, T-19-N, R-15-W,
WASHINGTON TOWNSHIP, HOLMES COUNTY, OHIO



Deed Vol. 248 Pg. 807169419

Rec'd. SEP 20 1990 AT 11:42 O'CLOCK PM
Recorded SEP 27 1990 Holmes Co. Ohio Fee: 9.35
Plat Vol. 12 Pg. 529 Recorder Richard G. ...
R Forsthuber

SURVEYORS DECLARATION

WE HEREBY DECLARE THAT THE HERFON ATTACHED PLAT IS THE RESULT OF A SURVEY MADE BY THE OFFICE OF POGGEMEYER DESIGN GROUP, INC. DURING June 1990. ALL DISTANCES ARE IN FEET AND DECIMALS THEREOF.

THE BEARINGS REFERRED TO HEREON ARE BASED UPON AN ASSUMED MERIDIAN AND ARE ONLY FOR THE PURPOSE OF ANGULAR MEASUREMENT.

POGEMEYER DESIGN GROUP, INC.
ARCHITECTS-ENGINEERS-PLANNERS
121 EAST WOOSTER STREET
BOWLING GREEN, OHIO 43402
(419) 352-7537

Robert A. Sanford, PS 9/28/90
ROBERT A. SANFORD, PROFESSIONAL SURVEYOR NO. 5424

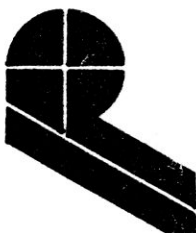
ANY INFORMATION ON THIS DRAWING IS NOT INTENDED TO BE SUITABLE FOR REUSE BY ANY PERSON, FIRM OR CORPORATION OR ANY OTHERS ON EXTENSIONS OF THIS PROJECT OR FOR ANY USE ON ANY OTHER PROJECT. ANY REUSE WITHOUT WRITTEN VERIFICATION AND ADAPTATION BY THE ENGINEER, ARCHITECT OR SURVEYOR FOR THE SPECIFIC PURPOSE INTENDED WILL BE AT THE USERS SOLE RISK AND WITHOUT LIABILITY OR LEGAL EXPOSURE TO THE ENGINEER, ARCHITECT OR SURVEYOR.



● DENOTES SET-CAP'D 5/8" IRON REBAR



POGEMEYER DESIGN GROUP, INC.
ARCHITECTS + ENGINEERS + PLANNERS
BOWLING GREEN, OHIO



PLAT APPROVED
9-25-90 Rg