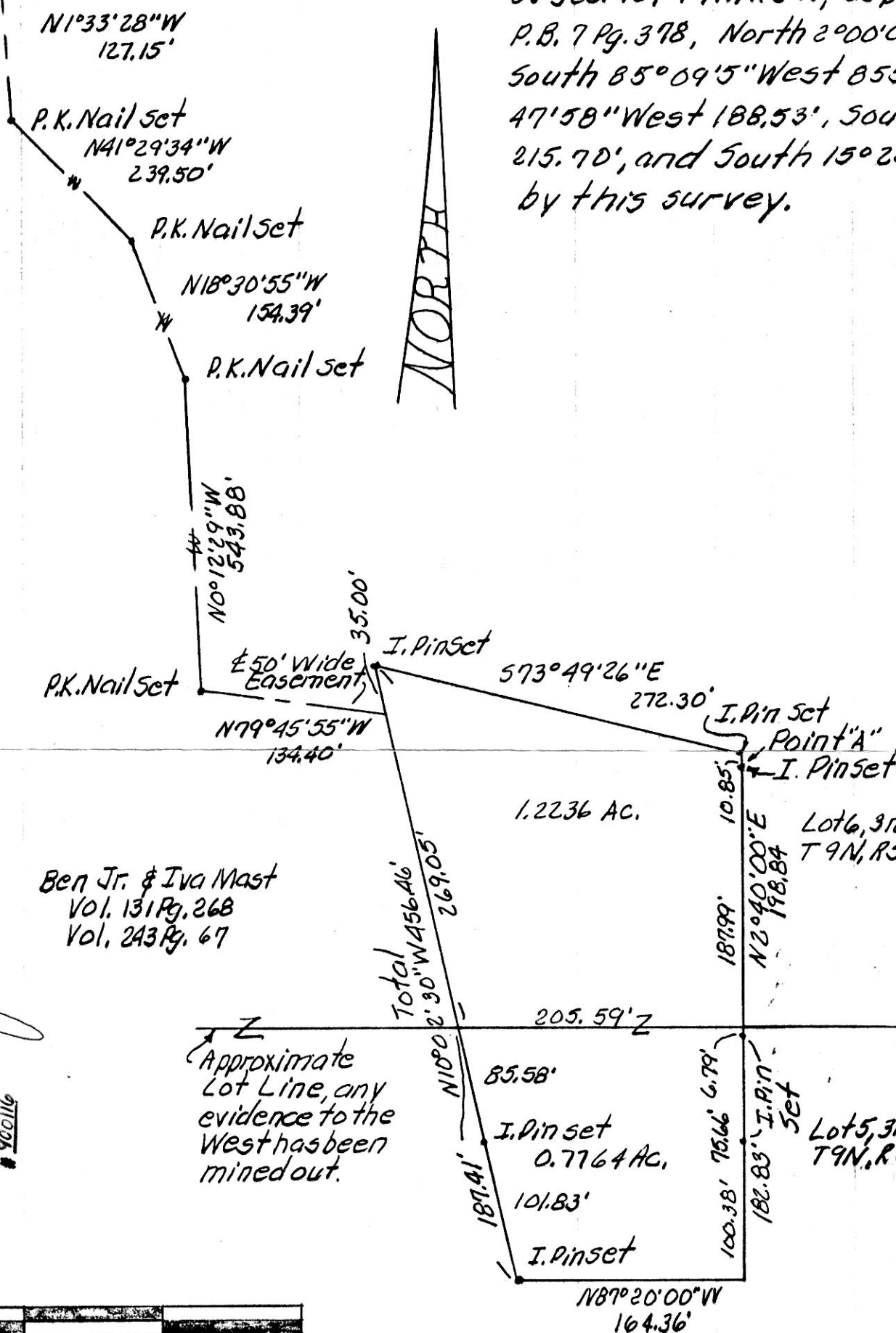


VOL 12 PAGE 490
Approximate E.S.R. 39

Point "A" is the following courses and distances from the S.W. corner of the N.E. 1/4 of Sec. 18, T9N, R5W, as per Vol. 111 Pg. 401, and P.B. 7 Pg. 378, North 2°00'00" East 1,662.54', South 85°09'5" West 855.86', South 88°47'58" West 188.53', South 2°40'00" West 215.70', and South 15°25'35" West 814.28' by this survey.

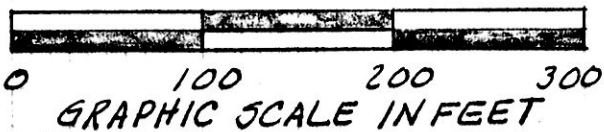


This 2.000 acre plat is approved for residential wastewater treatment.

[Signature]
Sanitarian

7/20/90
Date
SPLIT APPROVED
900116

Ben Jr. & Iva Mast
Vol. 131 Pg. 268
Vol. 243 Pg. 67



Beed Vol. 248
Pg. 102 168785

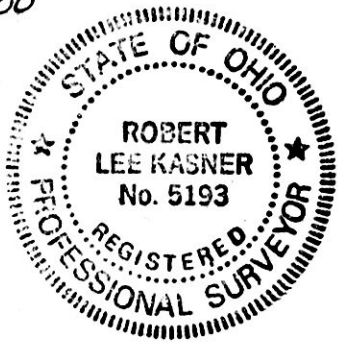
REC'D. AUG 07 1990
AT 4:04 o'clock PM

RECORDED AUG 08 1990

Plat VOL 12 PG. 490

Holmes Co. Ohio Fee: \$7.70

Richard Grainger
Recorder
Sam



PLAT OF A SURVEY FOR
BEN MAST JR. ETUX
Grantor

Known as part of Lots 5 & 6,
3rd Qtr, T9N, R5W, of Wal-
nut Creek Twp., Hol. Co.,
Ohio.

Robert L. Kasner, P.S. 5193
P.E. 28820
7/5/90

PLAT APPROVED
7/30/90