

PREPARED BY:

R.W. GASBARRE & ASSOC. INC.
P.O. BOX 44 · 401 S. MARKET ST.
WOOSTER, OHIO 44691
(216) 264-9499

"RING ALLOTMENT No. 1"; PRAIRIE TWP.

S.W. QTR. SECTION 30 T-14N R-13W HOLMES COUNTY, OHIO

168067

"DEDICATION"

90176
VOL 12
PAGE 478

KNOW ALL MEN BY THESE PRESENTS THAT WE THE UNDERSIGNED, OWNERS OF THE LAND SHOWN ON THIS PLAT, HAVE CAUSED THE SAME TO BE SURVEYED AND PLATTED AND DO HEREBY ACKNOWLEDGE TO BE OUR OWN FREE ACT AND DEED.

Witness our hands this 23rd day of May 1990.

Owners:

Witnesses:

Betty Ring
BETTY J. RING
Oliver Ring
OLIVER RING

Ray W. Eastman
Freda M. Schneider

STATE OF OHIO
SS
COUNTY OF WAYNE

Before me Freda M. Schneider a notary public in and for said county and state, personally appeared the above who acknowledge that they did sign the foregoing and that the same is their own free act and deed.

Signed and sealed this 23rd day of May 1990.

Freda M. Schneider
Notary Public

FREDA M. SCHNEIDER
NOTARY PUBLIC, STATE OF OHIO
MY COMMISSION EXPIRES MAY 15, 1994



Approved this 17th day of July 1990 by the Soils and Water Conservation District of Holmes County.
By Deane L. Mart

Approved this 10th day of July 1990 by the Holmes County Planning Department.
By Walter V. Palmer

Approved this 13 day of July 1990 by the Holmes County Engineer.
By Robert L. Kasner P.E.P.S.

Approved this 17th day of July 1990 by the Holmes County Health Dept.
By James Miller

Approved this 16th day of July 1990 by the Holmes County Commissioners.
By Clayton Henshberger

Received for transfer this _____ day of _____ 1990 by the Holmes County Tax Map Office.
By: _____

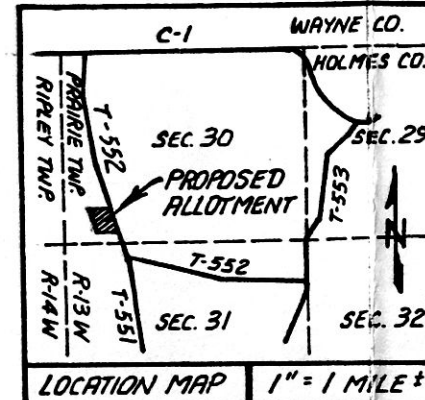
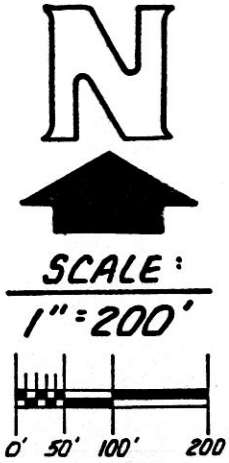
Received for transfer this 20th day of July 1990 by the Holmes County Auditors Office.
By: Kevin Pyle

Received for recording this _____ day of _____ 1990 by the Holmes County Recorders Office.
By: _____

Recorded in Plat Volume _____, Page _____.

Rec'd JUL 20 1990 AT 11:15 AM
Recorded JUL 23 1990 Holmes Co. Ohio Fee: \$9.35
Plat Vol. 12 Pg. 478 Recorder Richard Gravenor

INDEXED

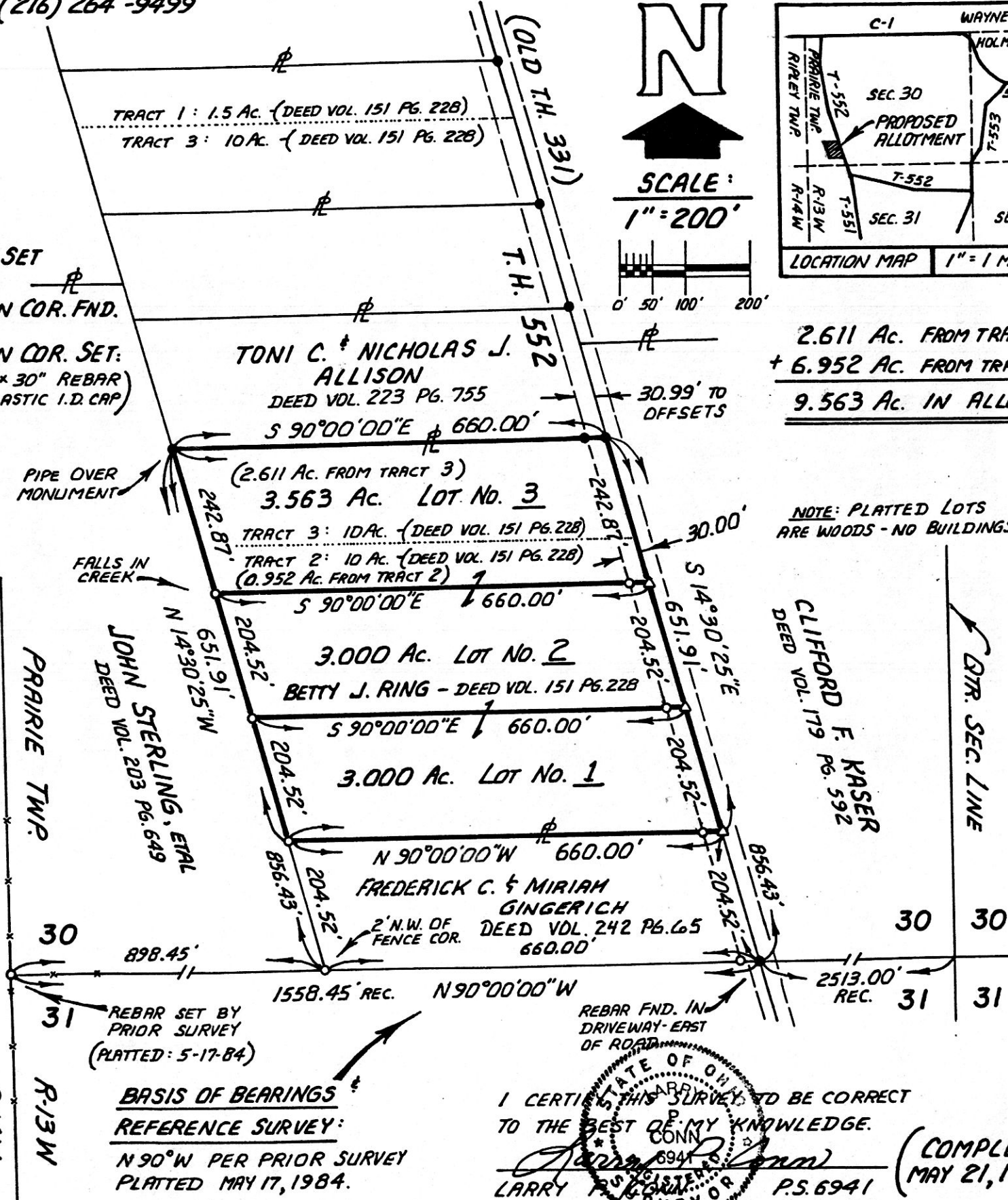


2.611 Ac. FROM TRACT 3
+ 6.952 Ac. FROM TRACT 2
9.563 Ac. IN ALLOT.

NOTE: PLATTED LOTS ARE WOODS - NO BUILDINGS.

CLIFFORD F. KASER
DEED VOL. 179 Pg. 592

QTR. SEC. LINE



I CERTIFY THIS SURVEY TO BE CORRECT TO THE BEST OF MY KNOWLEDGE.
Larry P. Gasbarre
LARRY P. GASBARRE
SURVEYOR
P.S. 6941
REV. 7-6-90 R&G
(COMPLETED: MAY 21, 1990)

BASIS OF BEARINGS
REFERENCE SURVEY:
N 90° W PER PRIOR SURVEY
PLATTED MAY 17, 1984.