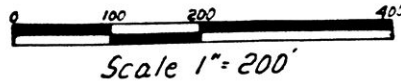


BERLIN TOWNSHIP
HOLMES COUNTY, OHIO
N.W. QTR., SEC. 7, T-9N, R-5W

1" Solid I.P. Found
1' East Of Concd.
Corner Post
4 4
7 7

- Stone Found With "+"
- Iron Pin Found
- Iron Pin Set - 5/8" Rebar With Yellow Cap Marked "LONG-7115"

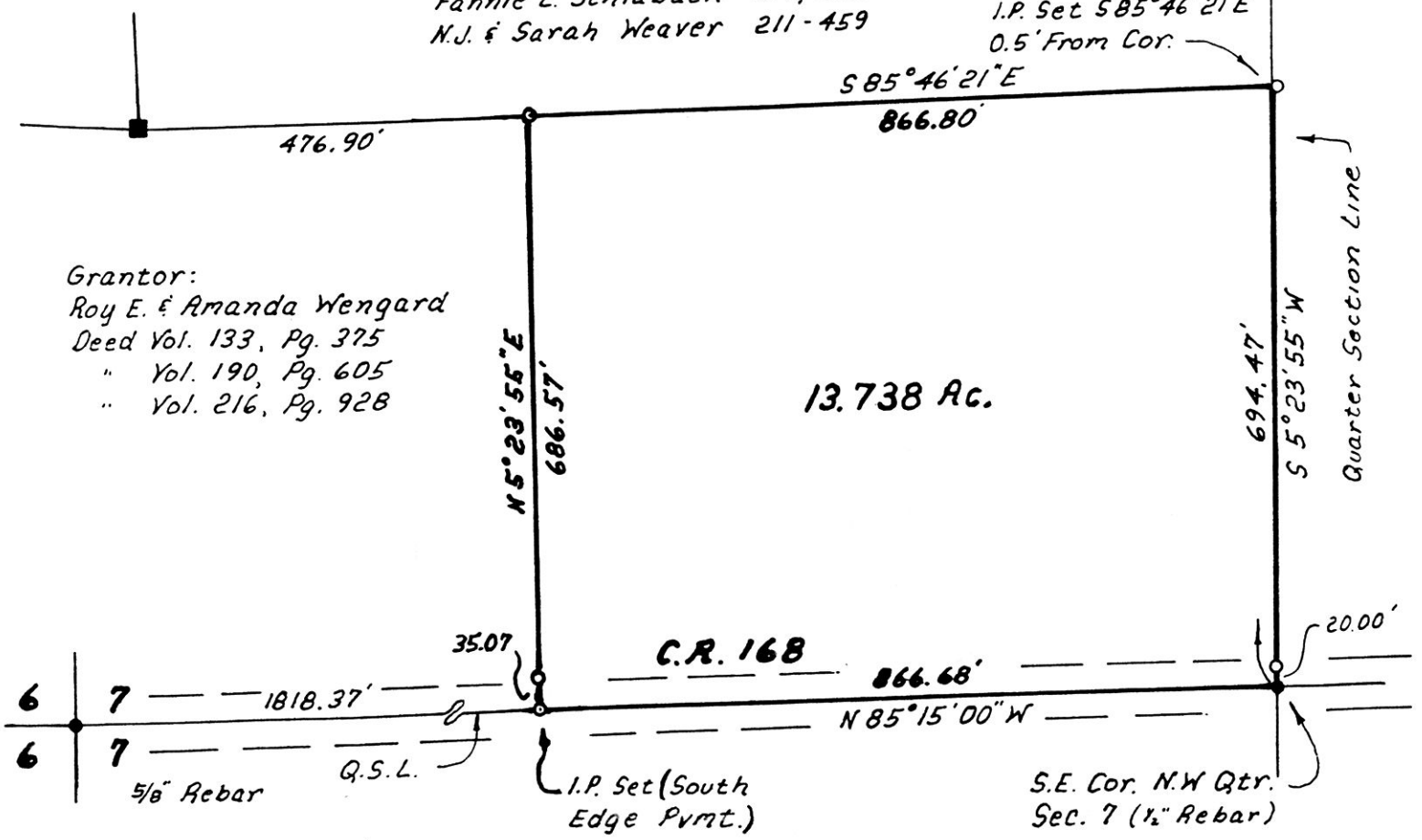


Bearings Based On Plat Vol. 7, Pg. 443

References: Plat Vol. 7, Pg. 443 Plat Vol. 8, Pg. 617
Plat Vol. 10, Pg. 862 Plat Vol. 10, Pg. 716

Fannie E. Schlabach - 164; 565
N.J. & Sarah Weaver 211-459

Corner Falls In Post.
I.P. Set S85°46'21"E
0.5' From Cor.



Grantor:
Roy E. & Amanda Wengard
Deed Vol. 133, Pg. 375
" Vol. 190, Pg. 605
" Vol. 216, Pg. 928

13.738 Ac.

I Certify This Survey To Be Correct
To The Best Of My Knowledge.

Donald G. Long August 17, 1989
Donald G. Long P.S. 7115 Revised 11/3/89
LONG SURVEYING INC.
12524 Co. Rd. 6
Killbuck Ohio 44637



168162

AT 2:00 o'clock PM
19-1990
Holmes Co. Ohio Fees \$5.00
Pg. 456 Recorder Richard Graener

Deed Vol. 247 Page 572

PLAT APPROVED
6/14/90 B