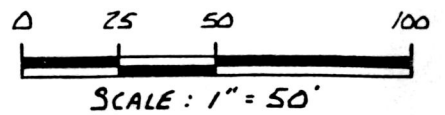


WALNUT CREEK TOWNSHIP
LOT 3, 3RD QTR., T-9N; R-5W
HOLMES COUNTY, OHIO

13 4
14 3

BERLIN TWP.
WALNUT CREEK TWP.

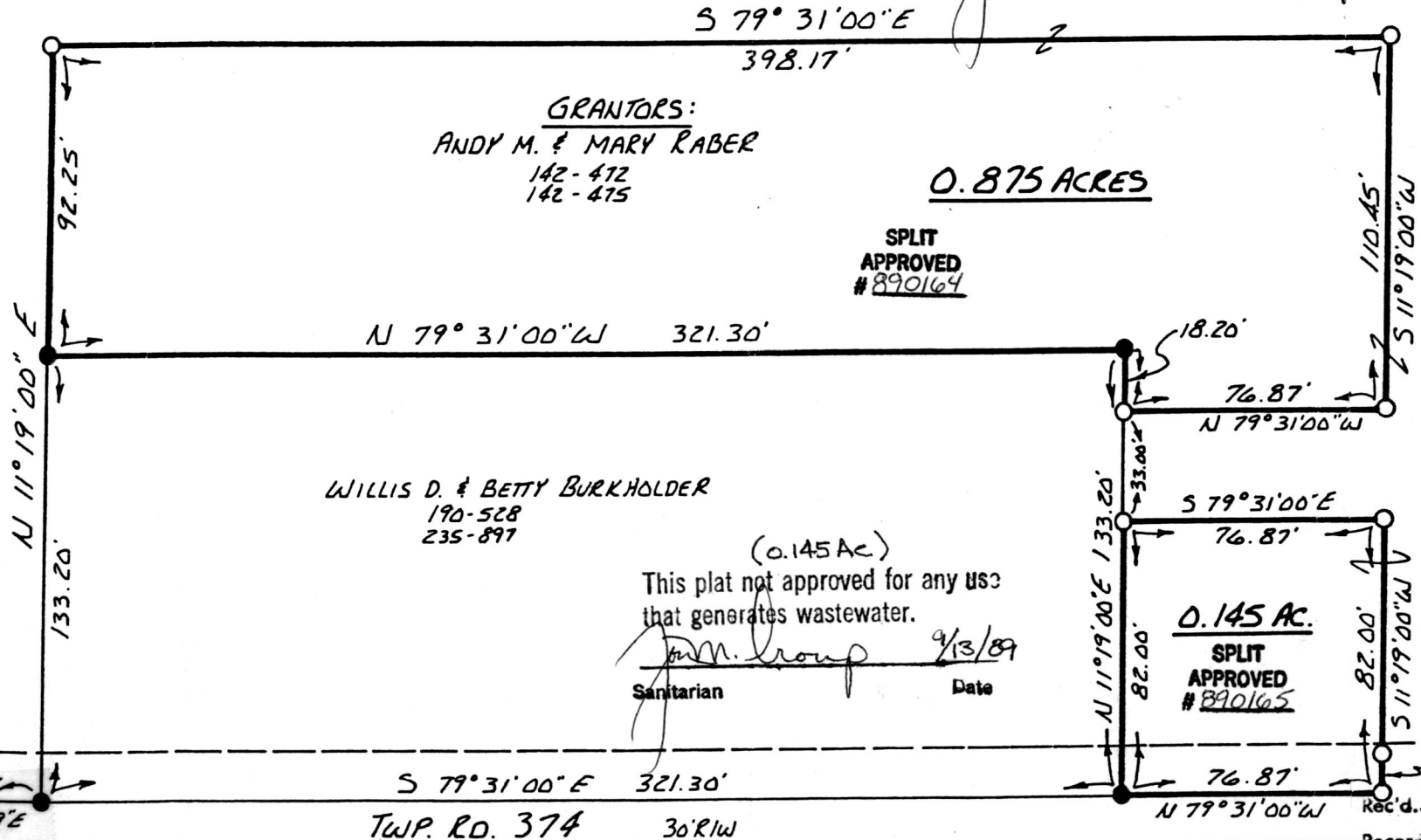
S 7° 35' 00" W 595.94' MEAS.



- IRON PIN FOUND
- ▲ P.E. SPIKE FOUND
- 5/8" REBAR WITH I.D. CAP SET I.D. CAP MARKED "BAKER 6938"

REFERENCES:
 PLAT VOL. 11 PAGE 149
 PLAT VOL. 8 PAGE 787
 BEARINGS FROM PLAT VOL. 7 PAGE 434

(0.875 Ac.)
 This plat not approved for any use
 that generates wastewater.
J.M. Group 9/13/89
 Sanitarian Date



I CERTIFY THIS SURVEY TO BE CORRECT TO THE BEST OF MY KNOWLEDGE.

Donald C. Baker
 DONALD C. BAKER P.S. 6938
 4321 T.R. 252
 GLENMONT, OH.
 APRIL 19, 1989
 165291

180.38' 120.89'
 S 77° 38' 30" E S 78° 21' 49" E

S 79° 31' 00" E 321.30'
 TWP. RD. 374 30' R/W

76.87' 82.00' 82.00'
 N 79° 31' 00" W

Rec'd. OCT 02 1989
 Recorded OCT 03 1989

AT 11:20 O'CLOCK AM
 Holmes Co. Ohio Fees \$5.00
 Plat Vol. 12 Pg. 306 Recorder *Richard ...*