

163822

WASHINGTON TOWNSHIP
S.W. QTR. SECTION 25
T-20 N R-15 W
HOLMES COUNTY, OHIO

CHARLES & MARYELLEN BAUER
145-164

pd. 9.35



SCALE: 1" = 100'

- IRON PIN FOUND
- 5/8" REBAR WITH I.D. CAP SET
I.D. CAP MARKED "BAKER 6938"

REFERENCES:

SURVEY RECORD 4 PAGE 112
 PLAT VOL. 4 PAGE 89
 PLAT VOL. 1 PAGE 383-384
 PLAT VOL. 1 PAGE 389-390
 PLAT VOL. 2 PAGE 209
 PLAT VOL. 2 PAGE 78
 BEARINGS FROM PLAT VOL. 2
 PAGE 3
 VARIOUS DEEDS AS SHOWN

This parcel can only be transferred
 with adjoining parcel with legal
 access or in another manner acceptable
 within Holmes Co. Subdivision Regulations.

TRU 5/8/89

ODELL'S LAKE YOUTH CAMP, INC.
 DEED VOL. 140 PAGE 518
11.720 ACRES

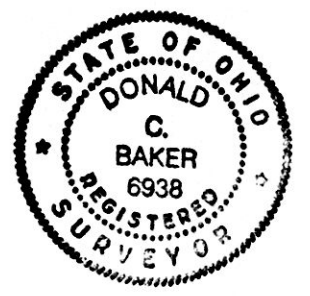
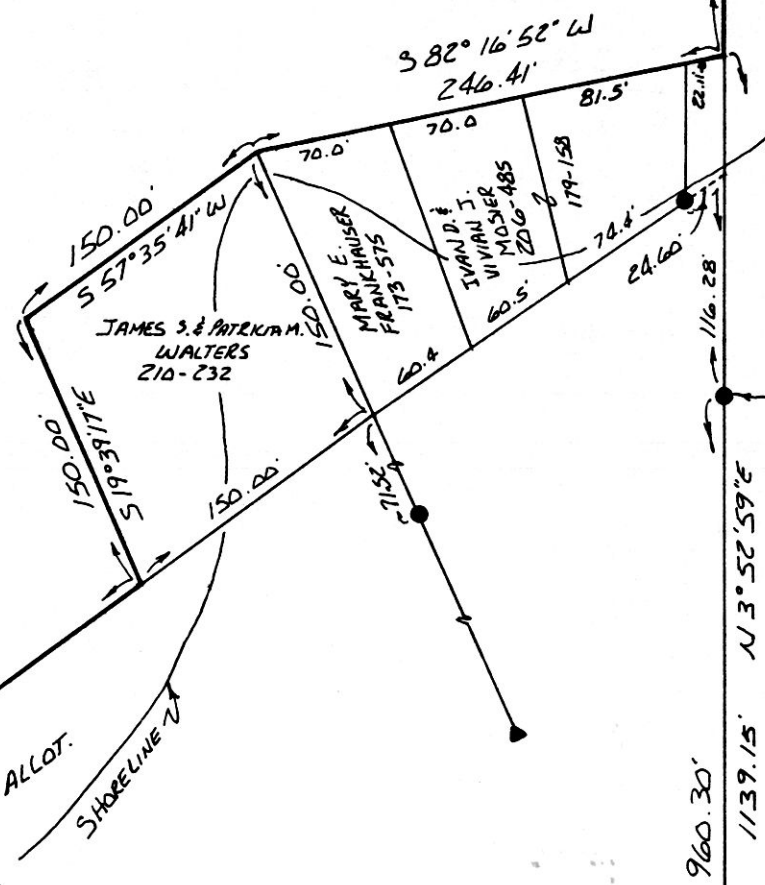
ODELL LAKE

SPLIT
APPROVED
890077

LAKEVIEW PARK SUB. NO. 1
 P.V. 1 P. 383-384

LAKEVIEW PARK SUB. NO. 3
 P.V. 1 P. 389-390

OAK GROVE PARK ALLOT.
 P.V. 2-98
 P.V. 4-112



I CERTIFY THIS SURVEY TO BE CORRECT TO THE BEST OF MY KNOWLEDGE.

Donald C. Baker

DONALD C. BAKER P.S. 6938

4321 T.R. 252
GLENMONT, OH.

DEC. 9, 1988

163822
 Deed Vol. 243 Page 316
 Rec'd. MAY 18 1989 AT 10:57 O'CLOCK AM
 Recorded MAY 19 1989 Holmes Co. Ohio Fee \$9.35
 Plat Vol. 12 Pg. 212 Recorder *Richard Craven*
 11 x 17 *Mann*

PLAT "B"

25 25
36 36

I.P. SET BY BILL LONG USED FOR LINE
SEE: PLAT VOL. 2 PAGE 209