

HARDY TOWNSHIP

HARDY TOWNSHIP
HOLMES COUNTY, OHIO
SE QTR., SECTION 14, T-9N, R-6W

161844



Bearings From
P.Y. 10, Pg 503

- Stone Found
- ▲ R.R. Spike Found
- Iron Pin Set - 5/8" Rebar With Yellow Cap Marked "LONG-6505"

References: P.Y. 10, Pg 503
P.Y. 5, Pg. 113
Deeds As Shown

VOLUME 12 PAGE 104

Holmes Siding
Contractors
Vol 229 Pg 544

Vol 233, Pg 595

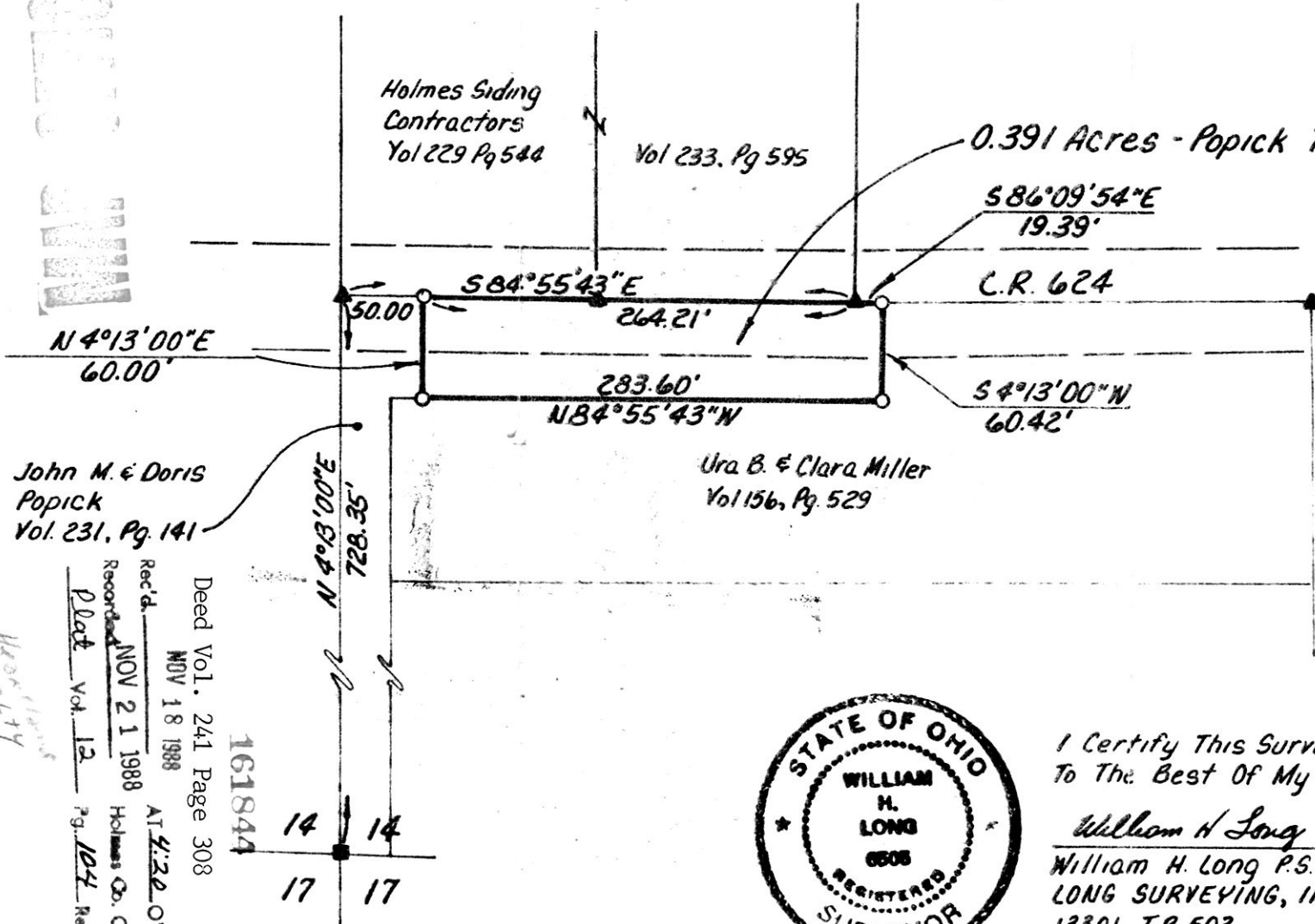
0.391 Acres - Popick To Ura Miller

(0.391 Ac.)

This plat not approved for any use
that generates wastewater.

Dennis H. Murray 11-9-88
Sanitarian Date

SPLIT
APPROVED
880169



John M. & Doris
Popick
Vol. 231, Pg. 141

Ura B. & Clara Miller
Vol 156, Pg. 529

Deed Vol. 241 Page 308

NOV 18 1988

NOV 21 1988

NOV 21 1988

Vol. 12

pg. 104 Recorder

AT 4:20 O'CLOCK P.M.

Holmes Co. Ohio Fee: 5.00

Richard
Ehren

161844



I Certify This Survey To Be Correct
To The Best Of My Knowledge

William H Long June 10, 1988

William H. Long P.S. 6505
LONG SURVEYING, INC.
13301 T.R. 503
Big Prairie, Ohio 44611

West
County
Relativity