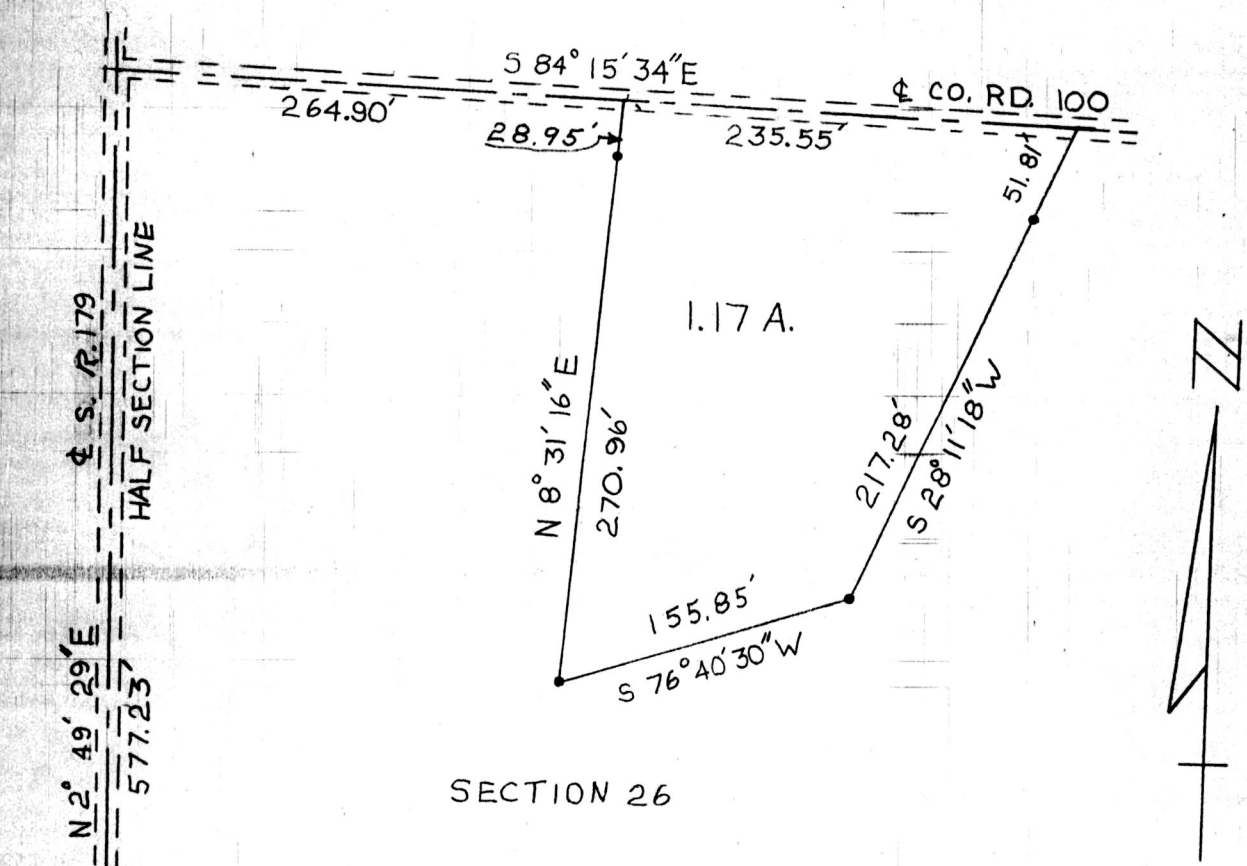


159801



SECTION 26

PLAT OF A TRACT OF LAND
 IN
 SECTION 26, RANGE 15W, TOWNSHIP 20N,
 WASHINGTON TOWNSHIP, HOLMES COUNTY
 OHIO

SCALE = 1" = 100'

JULY 5, 1974

• = Steel Pin

159801

Rec'd. MAY 18 1988 AT 10:17 O'CLOCK AM
 Recorded May 19 1988 Holmes Co. Ohio Fee: 5.00
Plat Vol. 10 Pg. 956 Recorder Richard Yawer

Richard Yawer, R.S. #414

