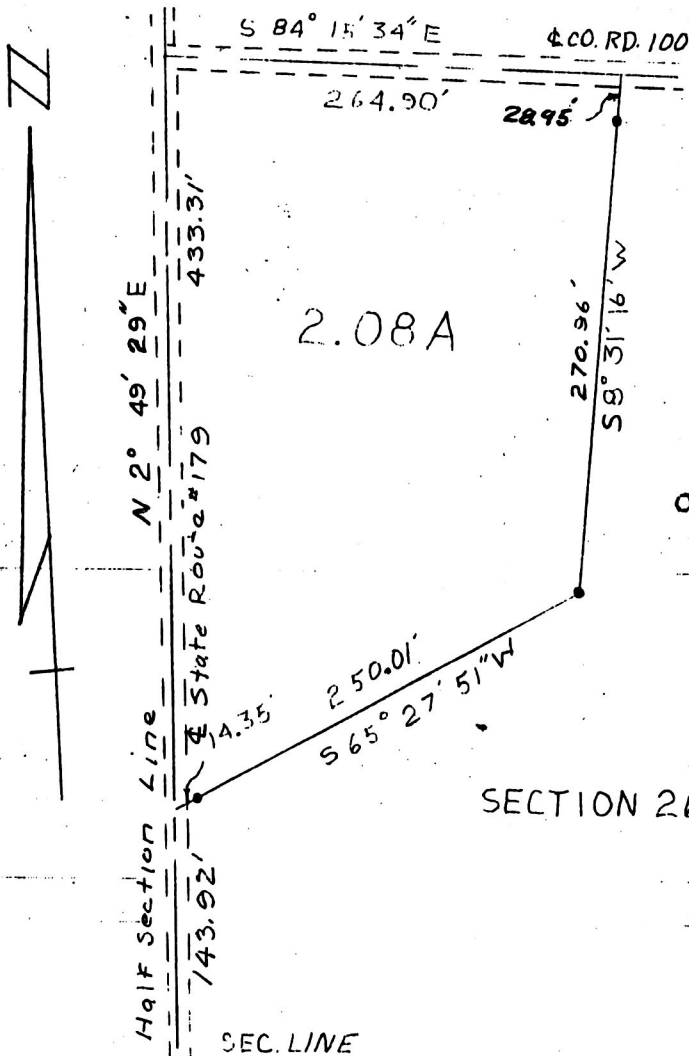


159800



Original Plat Filed With Map Office
Richard Groven, Recorder

SECTION 26

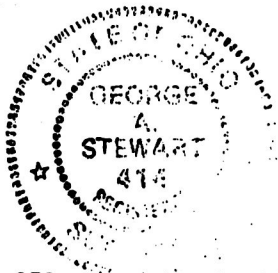
STEEL PIN

PLAT OF A TRACT OF LAND
IN
SECTION 26, RANGE 15 W, TOWNSHIP 20 N,
WASHINGTON TOWNSHIP, HOLMES COUNTY
OHIO

SCALE = 1" = 100'

NOV. 8, 1974

159800



Rec'd. MAY 18 1988 AT 10:16 o'clock AM
 Recorded May 19 1988 Holmes Co. Ohio Fee: 5.00
Plat Vol. 10 Pg. 955 Recorder Richard Groven

G. A. Stewart, Q.S. #41A