

P. & S. KLINE
225/502

R. H. & P. K.
MILLER
221/529

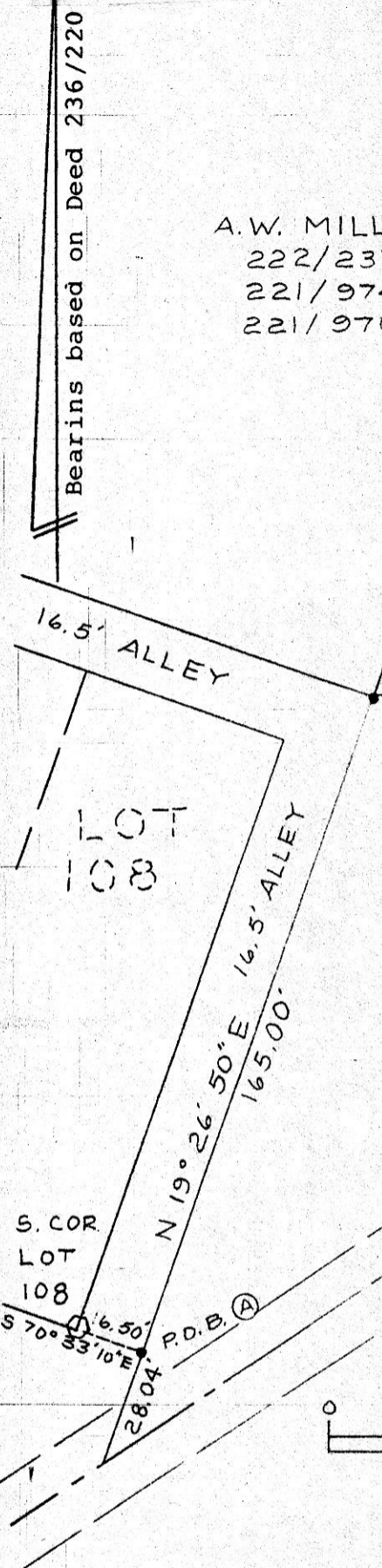
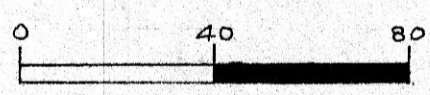
A. W. MILLER
222/237
221/974
221/970

(B)
0.646 Ac.

(A)
0.356 Ac.

- o = Recovered 1/2" pipe
- = Set 3/4" X 30" rebar with aluminum cap.
- = Recovered 3/4" pipe

Research Data;
 Deeds: 225/502 221/529 221/974
 236/220
 Plats:
 Plat Vol. 4/176
 Deed Vol. 11, Page 22



Boundary Survey
 for
 Atlee Sommers
 in
 Out Lot 8, Village of Berlin
 Section 15
 Range 5W, Township 9N
 Berlin Township
 Holmes County
 Ohio

159246

MAR 25 1988

REC'D.
 AT 3:28 o'clock PM
 RECORDED MAR 28 1988
 Plat VOL 10 PG. 928
 Holmes Co. Ohio Fee: 5.00
 Richard Hoven Recorder

Scale: 1"=40' March 1, 1988

Deed Vol. 110 Pg 236
 Prepared By
G.A. STEWART INC.
 450 S. 4th Street (614) 622-2783
 COSHOCTON, OHIO 43812

R. Scott Johnson
 R.P.S. No. 6791

