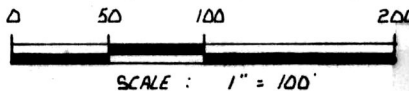


WALNUTCREEK TOWNSHIP
 N.W. QTR. SECTION 15
 TWP. 9 N RANGE 4 W
 HOLMES COUNTY OHIO

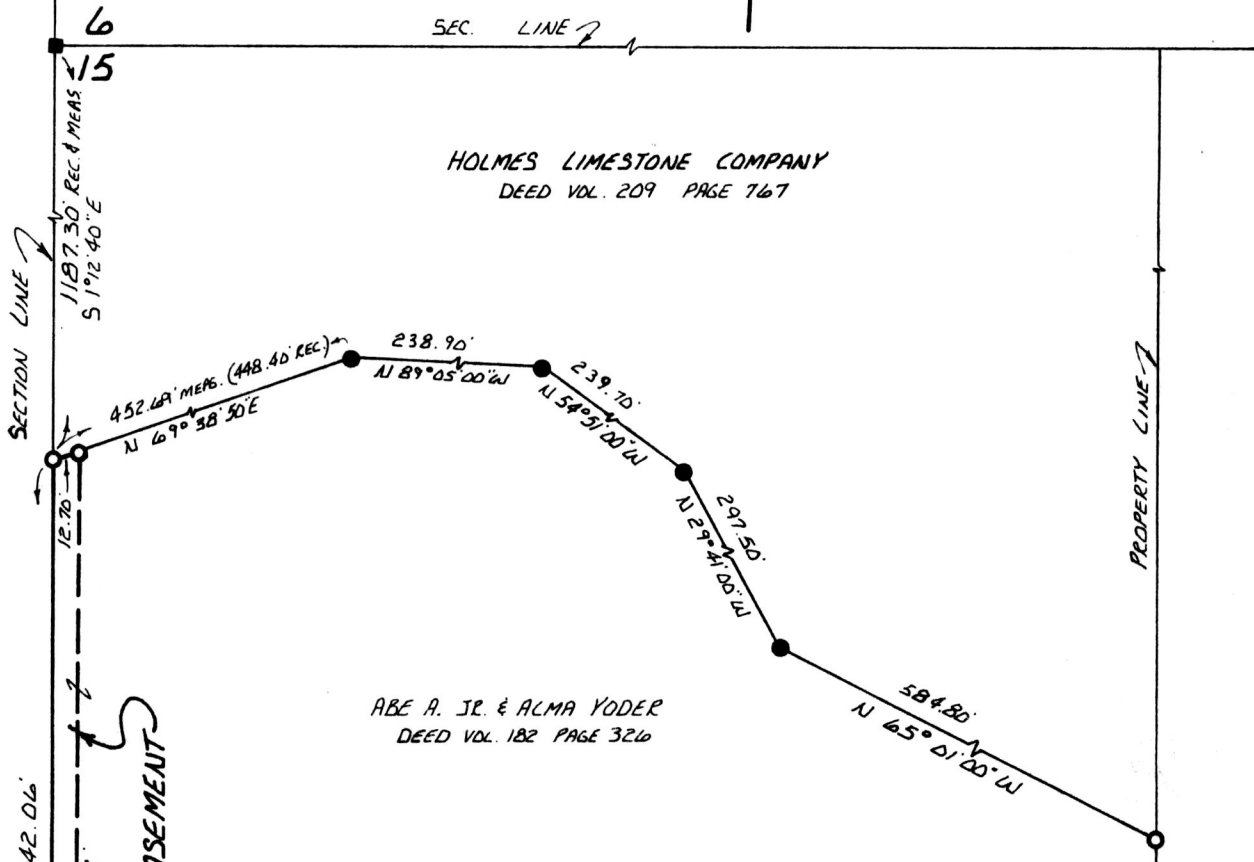
158883



VOL 10 PAGE 905

- STONE WITH "X" FOUND
 - IRON PIN FOUND
 - 5/8" REBAR WITH I.D. CAP SET
- REFERENCES:
 PLAT VOL. 11 PAGE 171
 BEARINGS FROM PLAT VOL. 8
 PAGE 615

MAP OFFICE COPY



HOLMES LIMESTONE COMPANY
 DEED VOL. 209 PAGE 767

ABE A. JR. & ALMA YODER
 DEED VOL. 182 PAGE 326

APPROVED BY
 TAX MAP OFFICE

Date 2/19/88



158883

I CERTIFY THIS SURVEY TO BE CORRECT
 TO THE BEST OF MY KNOWLEDGE.

Donald C Baker

DONALD C. BAKER P.S. 6938

GLENMONT, OH PH. 377-4177

DEC. 7, 1987

REC'D FEB 19 1988

Recorded FEB 22 1988

Plat Vol. 10

588°47'20" W Deed Vol. 238 Pg. 131

AT 1:31 O'CLOCK PM

Holmes Co. Ohio Fee: \$5.00

Pg. 905 Recorder Richard Yesser JR 252

Pal Miller

BERLIN
 MINERAL
 COMPANY
 DEED VOL. 211
 PAGE 793

50.00'

N 1°12'40" W 442.06'

S 1°12'40" E 446.22'

SECTION LINE

6
15

SEC. LINE 7

PROPERTY LINE

1187.30' REC. & MEAS
 S 1°12'40" E

452.68' MERG. (448.40' REC.)
 N 69°38'30" E

238.90'
 N 89°05'00" W

239.70'
 N 54°51'00" W

297.50'
 N 29°41'00" W

584.80'
 N 65°01'00" W

12.70'

12' RIGHT-OF-WAY EASEMENT