

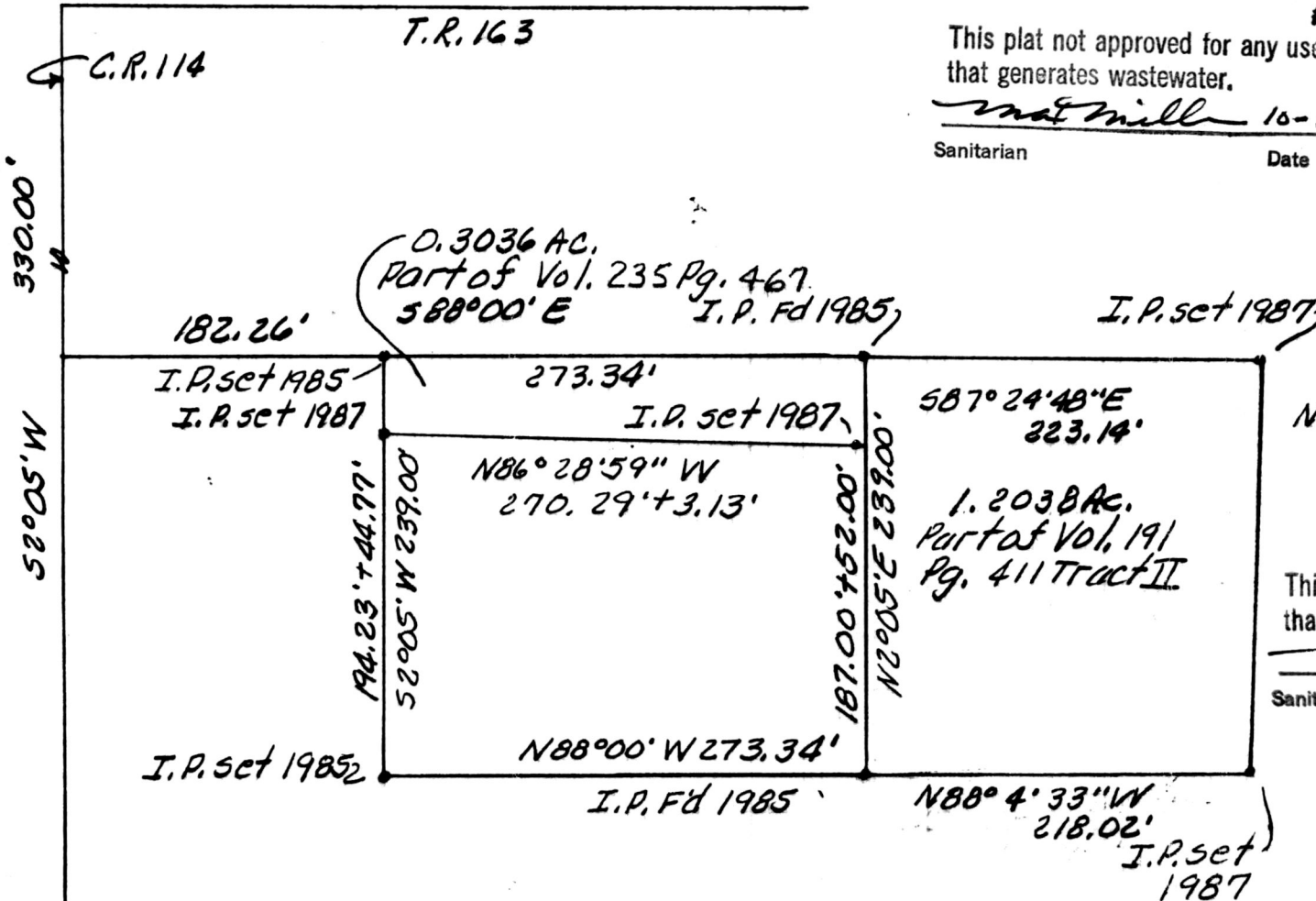
(N.W. cor N.E. '14 Sec. 12, T.8N, R.5W
at intersection C.R. 114 & T.R. 163

(1.2038 Ac.)

SPLIT
APPROVED
870183

This plat not approved for any use
that generates wastewater.

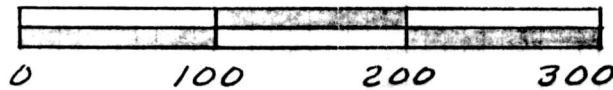
mat mill 10-13-87
Sanitarian Date



SPLIT
APPROVED
870182
(0.3036 Ac.)

This plat not approved for any use
that generates wastewater.

mat mill 10-13-87
Sanitarian Date



GRAPHIC SCALE IN FEET
Deed Vol. 237 Page 565 & 567
158328
DEC 28 1987

Rec'd. _____ At 1:11 O'CLOCK P
Recorded DEC 29 1987 Holmes Co., Ohio Fee 5.00
Plat Vol. 10 Pg. 882 Recorder Richard Graves

PLAT OF A SURVEY FOR
HARVEY P. RABER
Grantee
KNOWN as part of the N.E. '14
Sec. 12, T.8N, R.5W, of Clark
Twp., Hol. Co., Ohio
Robert L. Kasner P.S. 5193
8118187 P.E. 28820

MAP OFFICE COPY