

# Buckeye Land Surveying, Inc.

George W. Johnson 215 South Fifth Street, R. • Coshocton, Ohio 43812 (614) 622-4210  
Professional Land Surveyor "Service is more than a promise"

Ronald R. & Sandra K. Schlegel  
203 ~ 368 P. 8-294

Joseph L. & Nancy L. Hosfeld  
151 ~ 371

(0.672 Ac.)

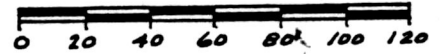
This plat not approved for any use that generates wastewater.

*Matthall* 11-13-87 Date

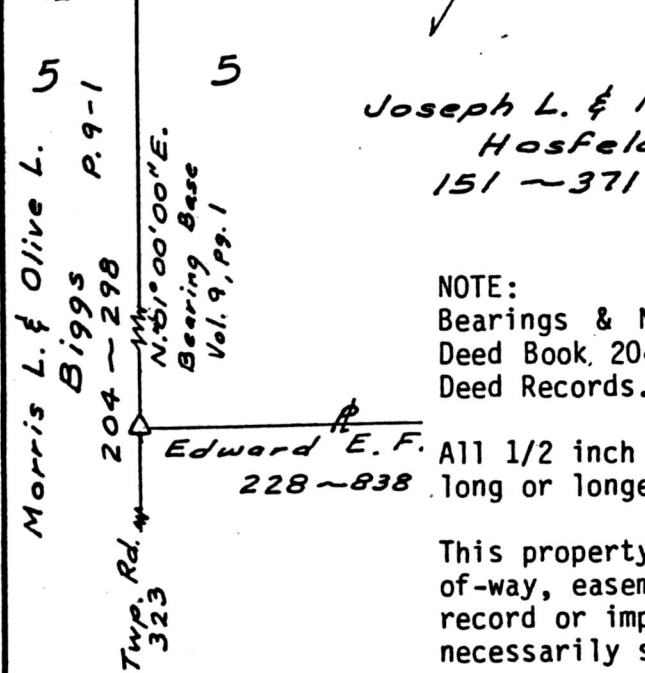
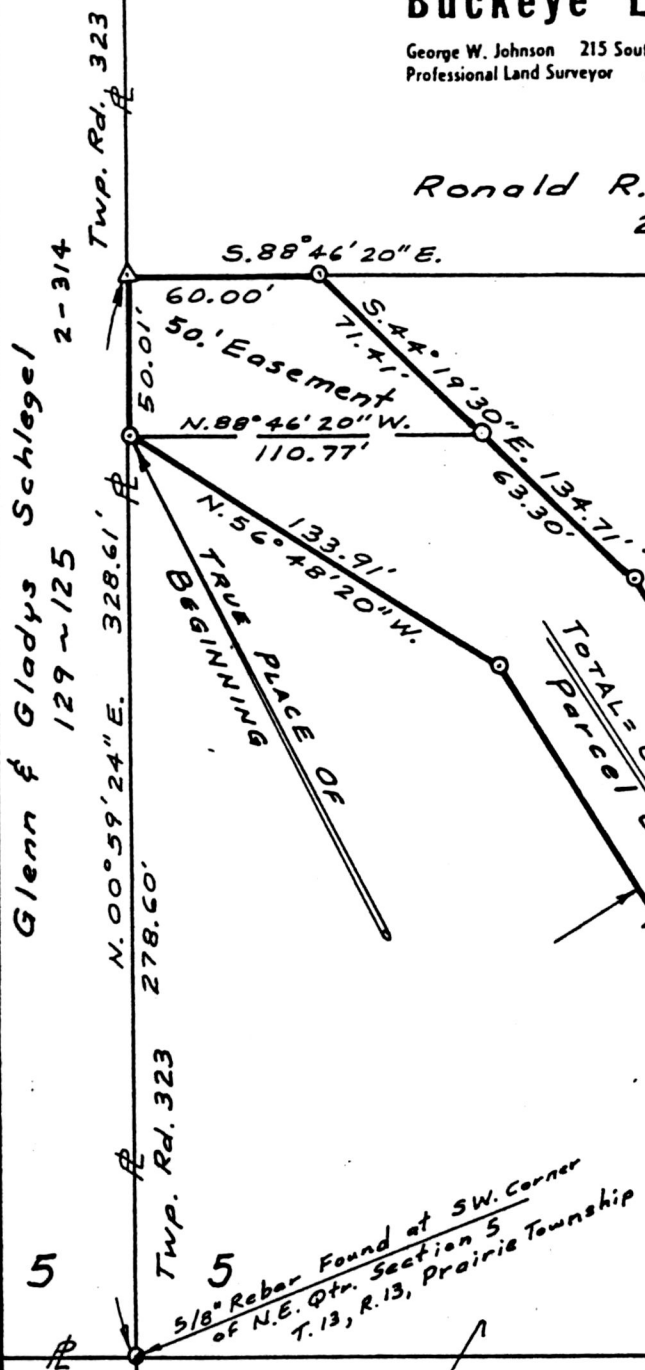
Sanitarian SPLIT APPROVED #870162



Scale: 1" = 60.0'



- △ R.R. Spike Found
- Iron Pin or Pipe Found
- Point
- ⊙ 1/2" Rebar with I.D. Cap 30" long or longer Set



Joseph L. & Nancy L. Hosfeld  
151 ~ 371

NOTE: Bearings & North Arrow are based on Deed Book 204, page 298, Holmes County Deed Records.

All 1/2 inch rebars set are 30 inches long or longer.

This property is subject to all rights-of-way, easements, and restrictions of record or implied, if any, and are not necessarily shown on this plat.

JOSEPH L. and NANCY L. HOSFELD  
To  
CASE FARMS, INC.

Parcel One - 0.672 Ac.+/-

Being a part of the Northeast and Southeast Quarters of Section 5, T.13 N., R. 13 W., Prairie Township, Holmes County and in the State of Ohio.

Scale: 1" = 60.0' Date: November, 1987



I HEREBY CERTIFY THAT THIS PLAT IS A TRUE DELINEATION OF A SURVEY BY GEORGE W. JOHNSON R.S. #5252

*George W. Johnson*  
11/12/87

MAP OFFICE COPY

NOV 19 1987 AT 3:32 O'CLOCK P.M.  
Recorded NOV 20 1987  
Holmes Co. Ohio Fees \$5.00  
Pg. 861 Recorder *Richard Weaver*